



KYOTO

Delivery Date: Q1 2027

DOMO
PROPERTIES



DOMO
PROPERTIES

Kyoto is a boutique residential project inspired by Japanese simplicity, offering just 12 meticulously designed apartments across four serene floors.

Every detail has been thoughtfully curated to create a harmonious living space that blends tranquility, functionality, and understated luxury.

At Kyoto, luxury extends beyond your front door. Residents enjoy access to a selection of exclusive amenities designed to enhance well-being, productivity, and relaxation:





A COSMOPOLITAN EXPANSE

Nestled in the prestigious area of Germasogeia, Evora offers residents the perfect balance of tranquility and convenience.

This sought-after neighborhood is renowned for its lush greenery, serene atmosphere, and proximity to the sparkling Mediterranean Sea, making it one of Limassol's most desirable locations.

The area is also home to a vibrant selection of high-end restaurants, cozy cafes, and chic bars, ensuring that dining and entertainment options are always within reach.









WALK

- | | |
|---------------------|-------|
| - Beach | 7 min |
| - Bakery | 5 min |
| - Schools | 7 min |
| - Supermarket | 6 min |
| - Kolonakiou Avenue | 5 min |



DRIVE

- | | |
|---------------------|--------|
| - Beach | 3 min |
| - Groceries | 2 min |
| - Motorway | 4 min |
| - Limassol Marina | 12 min |
| - St Raphael Marina | 12min |



THE NEIGHBORHOOD



LIFESTYLE

Kyoto is situated in the prestigious Papas area in Germasogeia, a coveted location known for its relaxed ambiance and effortless connectivity. The neighborhood seamlessly merges residential calm with urban convenience, placing residents within easy reach of Limassol's finest attractions.

MARKETS & BAKERIES

Just a few blocks away you'll find various primary amenities. Here you can stock up at Papas and Sklavenitis superstores before browsing the vast selection of local markets and bakeries providing everything from artisan bread to everyday essentials.



SCHOOLS & HOSPITALS

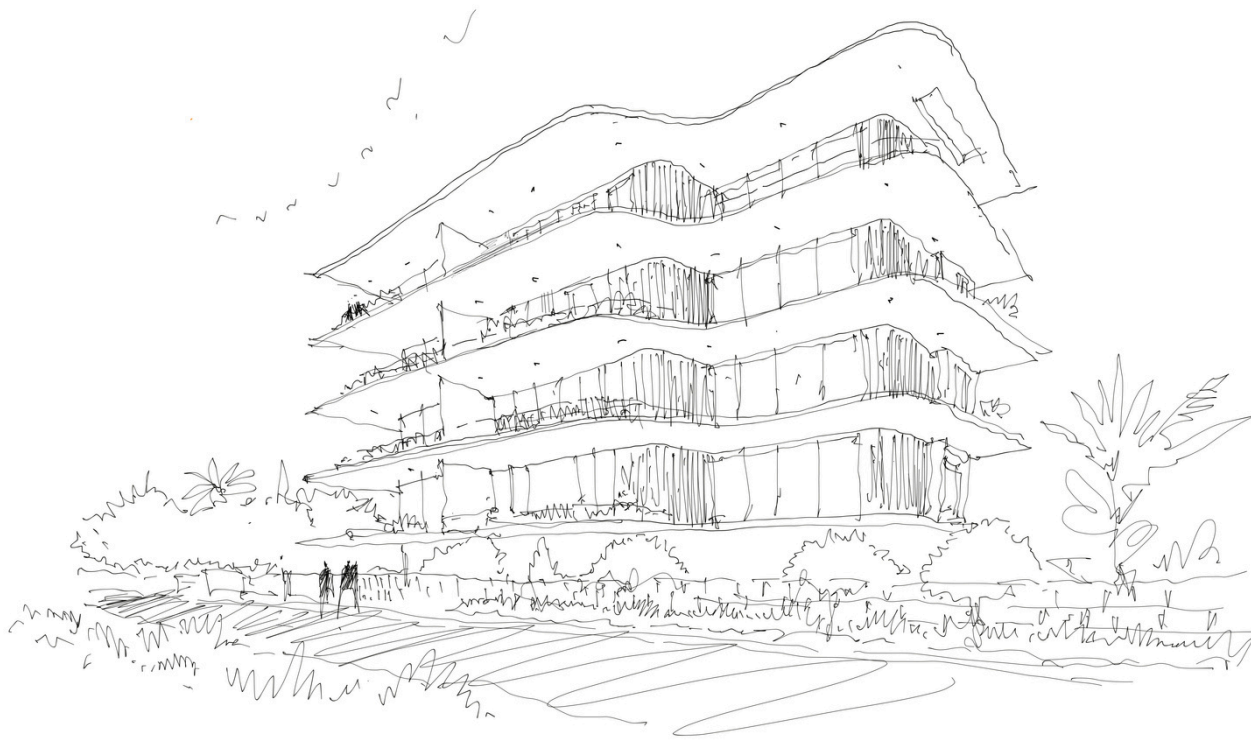
Two well respected public schools and many private kindergartens are within a short walk distance. Numerous private doctors and pharmacies are also a few minutes drive away from the residence.



CONTEMPORARY DESIGN

Designed with the principles of Japanese minimalism, Kyoto's apartments offer a serene retreat where clean lines, natural light, and open spaces create an atmosphere of calm sophistication.

Each residence is crafted with premium materials and cutting-edge technology to ensure comfort, efficiency, and timeless style.



















PROPERTY FEATURES



Central VRV air-conditioning system



Photovoltaic system with net metering



Electric vehicle charging provision



Face recognition entry video phone system



Interior design consultation



Energy-efficient heat pump boilers





PREMIUM FINISHES



High-quality European brand sanitary ware



Thermal aluminum lift & slide doors (floor-to-ceiling height)



High ceilings (+3m)



Ambient entrance lighting

COMMON FACILITIES



Sauna



Swimming pool



Fully equipped gym



Study room for remote work

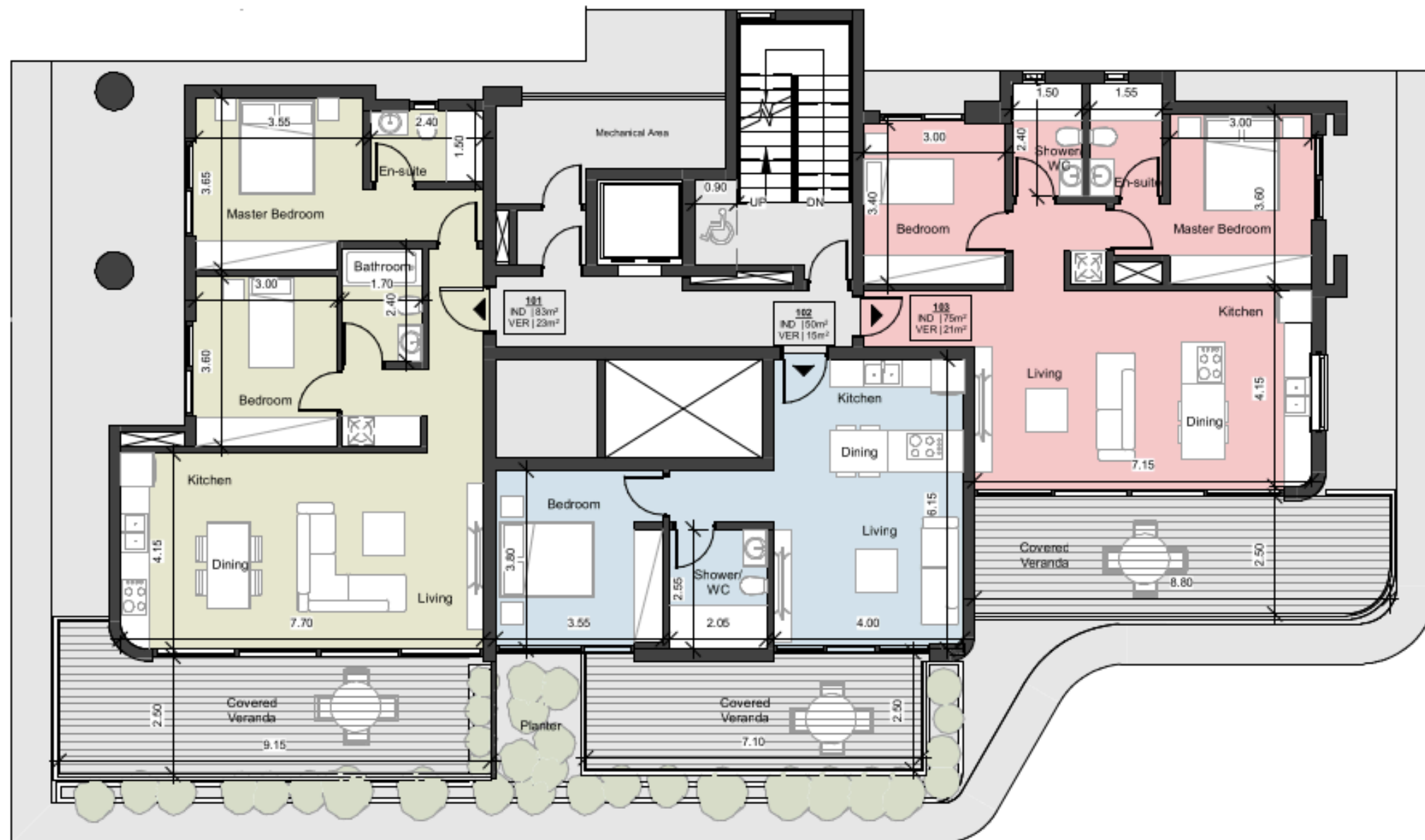
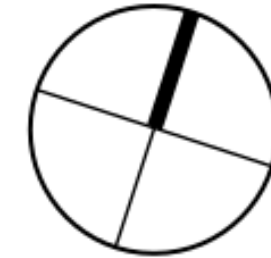




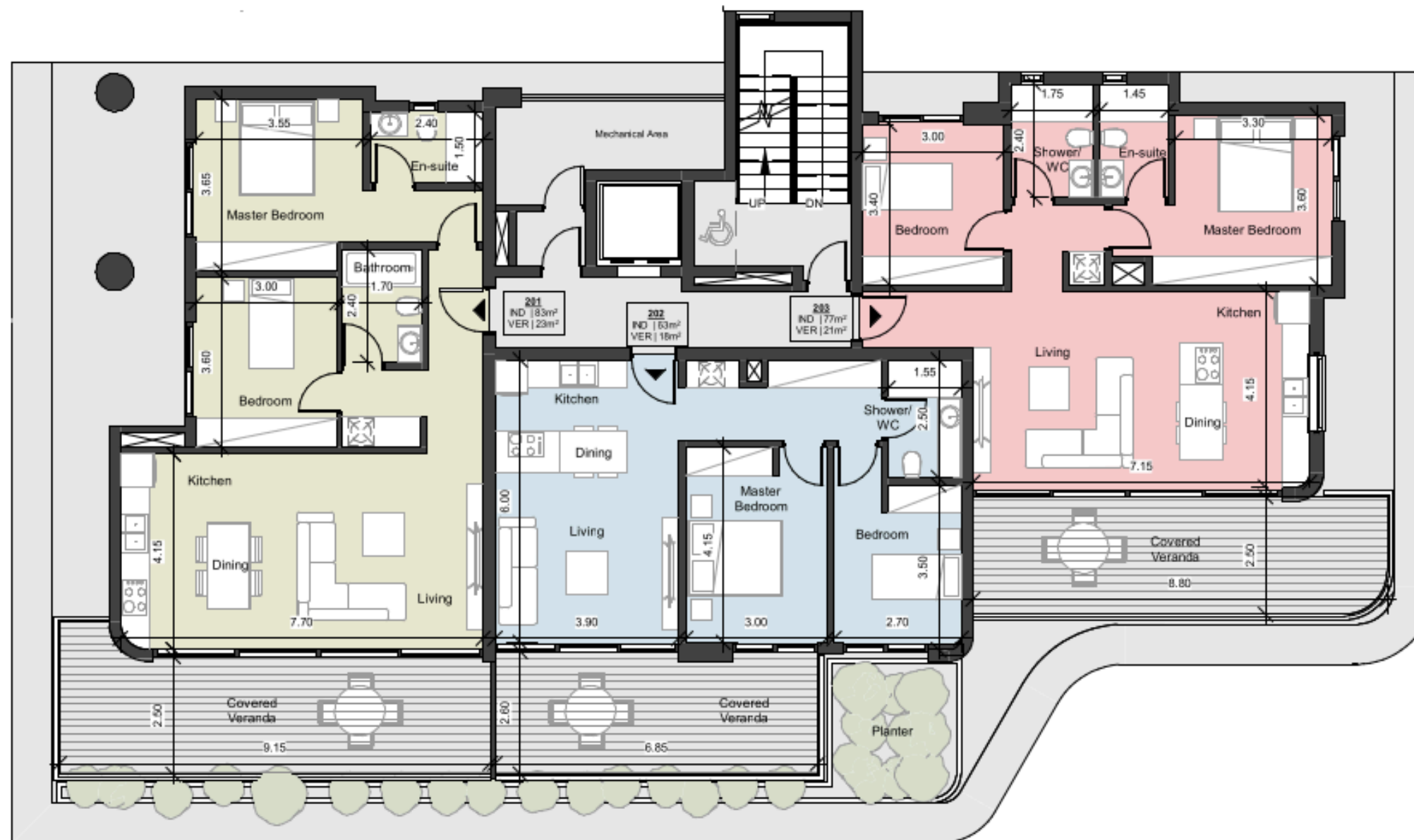
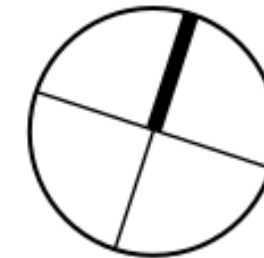
FLOOR PLANS



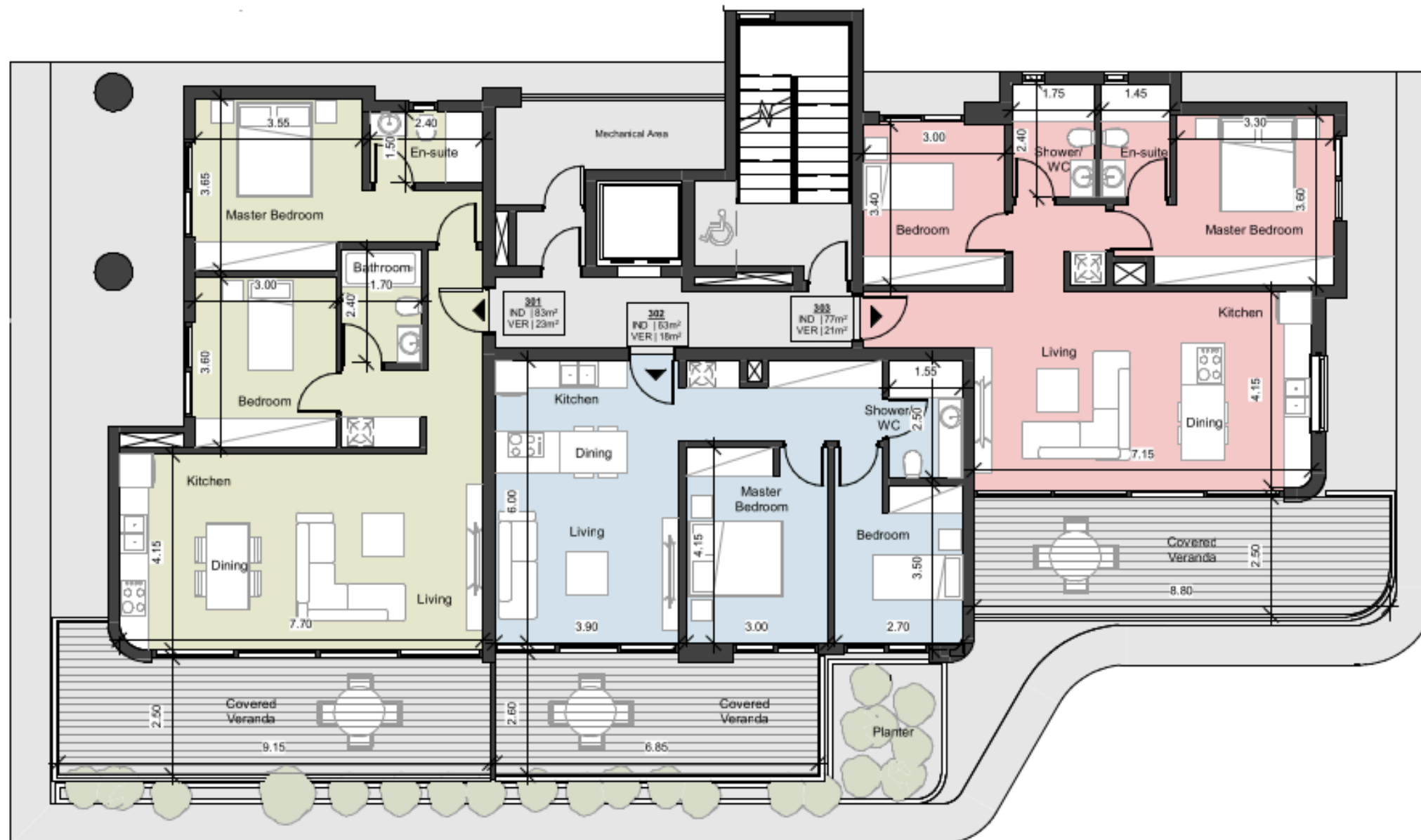
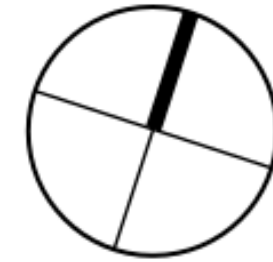
1ST FLOOR PLAN



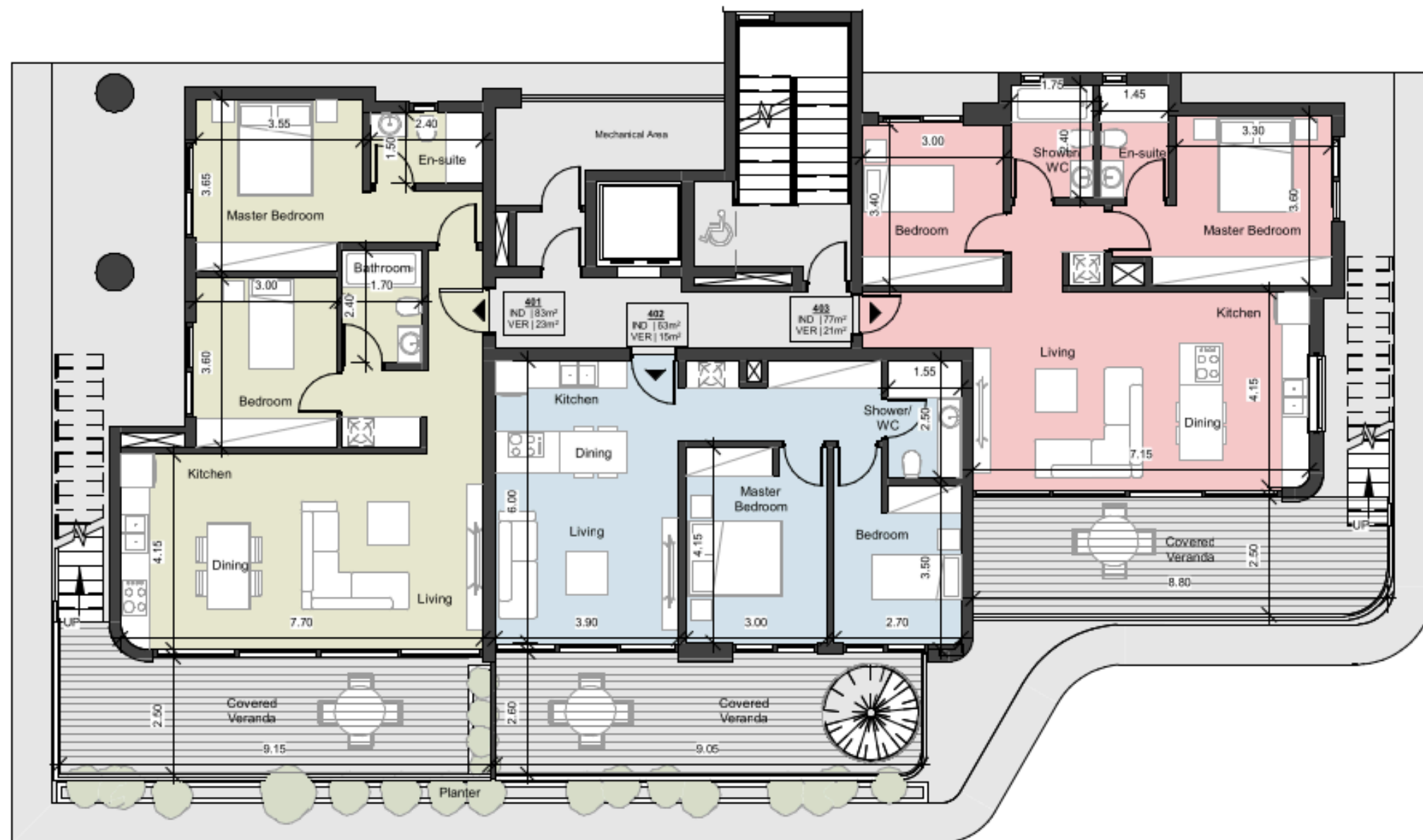
2ND FLOOR PLAN



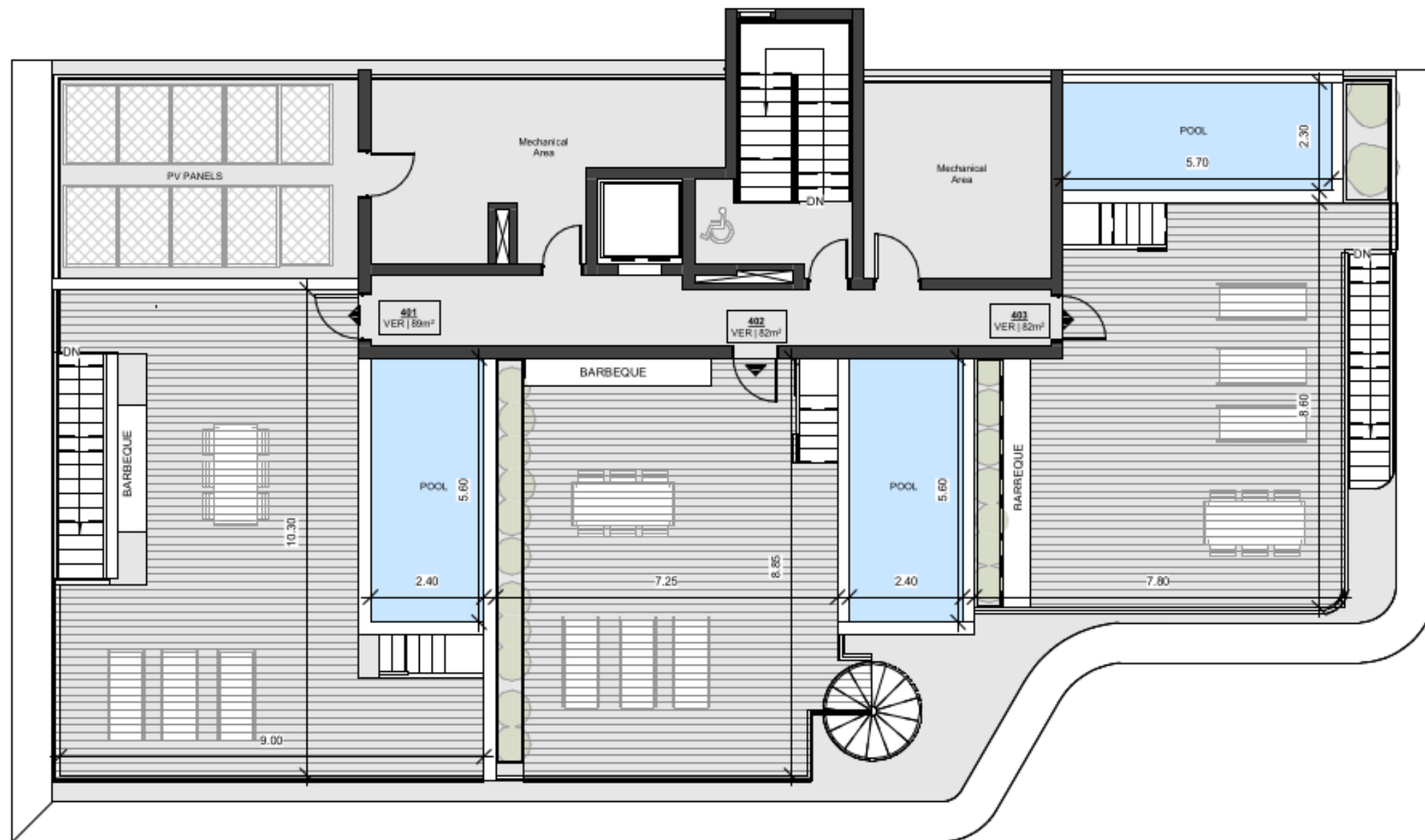
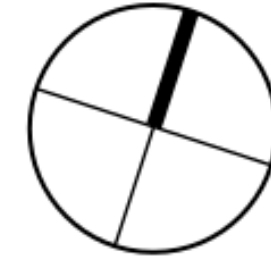
3RD FLOOR PLAN



4TH FLOOR PLAN



ROOF GARDEN FLOOR PLAN



DOMO PROPERTIES

Based in Limassol, we take great pride in distinctive projects across the city we love. With a strong focus on functional aesthetics, technology and sustainability we believe we make our customers lives better while protecting this island we call home.

OUR PHILOSOPHY

Spaces and places must have a positive impact on the people who use them and their surroundings. This is why we pursue to develop innovative, elegant and sustainable buildings that celebrate the use of natural light and the latest technologies. We strongly appreciate the importance of social, environmental and economic issues and work hard to address them with a caring approach to the way we design, develop and provision for our developments. The ultimate goal is to deliver life enhancing properties that are beautiful to look at and easy to live with.

For more information please visit us at:
www.domoproperties.com

DOMO
P R O P E R T I E S