



EVORA

Delivery Date: Q1 2027

DOMO  
PROPERTIES





**DOMO**  
PROPERTIES



Evora is a boutique residential building designed for those who appreciate exclusivity, sophistication, and modern convenience.

With only 12 meticulously crafted apartments, Evora offers a rare opportunity to experience a lifestyle of privacy, comfort, and elegance.







# A COSMOPOLITAN EXPANSE

Nestled in the prestigious area of Germasogeia, Evora offers residents the perfect balance of tranquility and convenience.

This sought-after neighborhood is renowned for its lush greenery, serene atmosphere, and proximity to the sparkling Mediterranean Sea, making it one of Limassol's most desirable locations.

The area is also home to a vibrant selection of high-end restaurants, cozy cafes, and chic bars, ensuring that dining and entertainment options are always within reach.















## WALK

- |               |        |
|---------------|--------|
| - Bank        | 10 min |
| - Bakery      | 10 min |
| - Schools     | 12 min |
| - Supermarket | 12 min |
| - Beach       | 15 min |



## DRIVE

- |                     |        |
|---------------------|--------|
| - Limassol Marina   | 11 min |
| - St Raphael Marina | 10 min |
| - Motorway          | 3 min  |
| - Beach             | 3 min  |
| - Historical center | 10 min |





# THE NEIGHBORHOOD



## LIFESTYLE

Evora is situated in Germasogeia, one of Limassol's most prestigious and sought-after areas. Known for its serene atmosphere, lush greenery, and proximity to the Mediterranean Sea, Germasogeia combines the tranquility of suburban living with the vibrancy of city life.

## MARKETS & BAKERIES

Just a few blocks away you'll find various primary amenities. Here you can stock up at Papas and Sklavenitis superstores before browsing the vast selection of local markets and bakeries providing everything from artisan bread to everyday essentials.



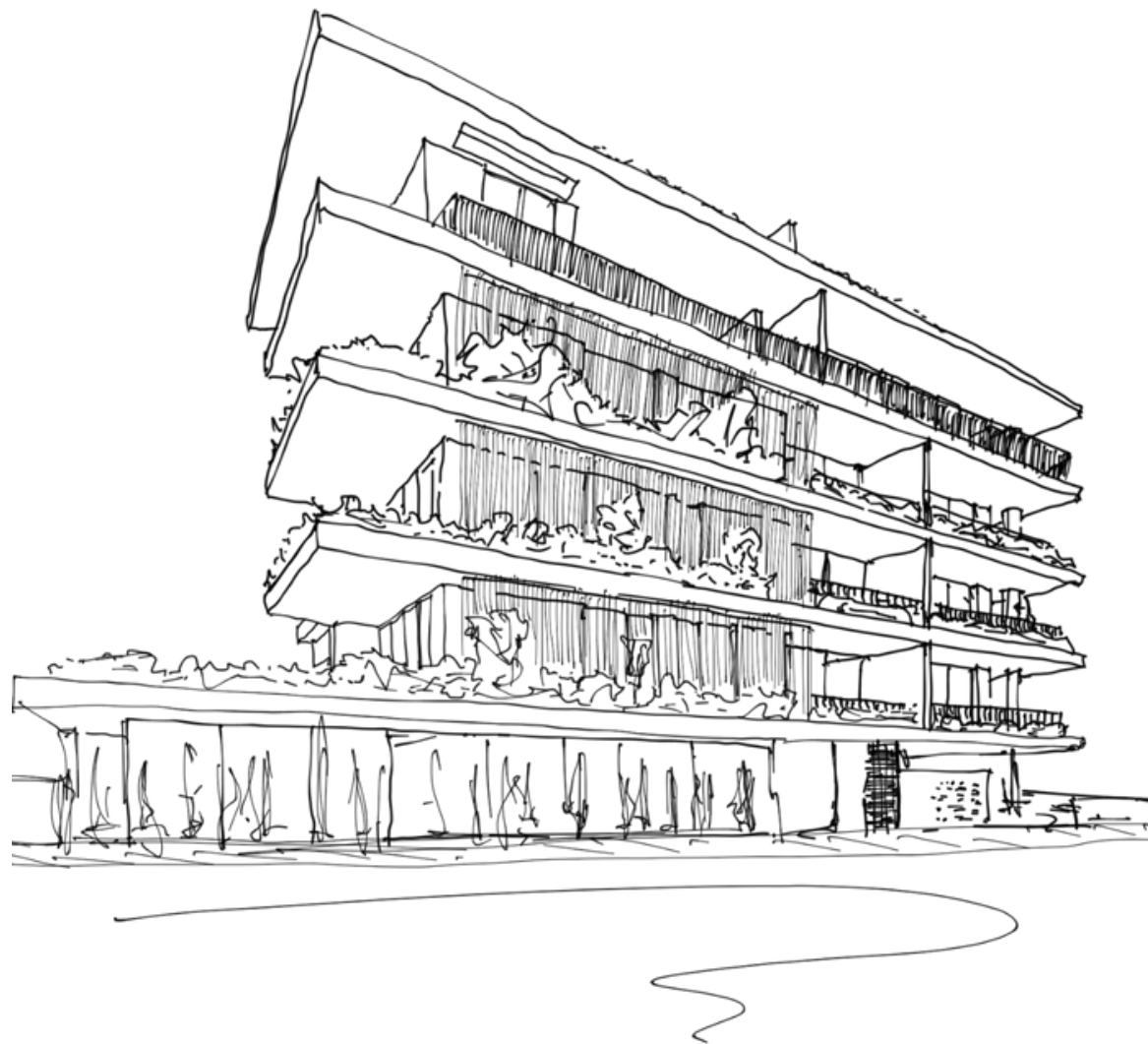
## SCHOOLS & HOSPITALS

Two well respected public schools and many private kindergartens are within a short walk distance. Numerous private doctors and pharmacies are also a few minutes drive away from the residence.





# CONTEMPORARY DESIGN



Evora's 12 apartments are designed with meticulous attention to detail, offering a harmonious blend of modern architecture and premium finishes. Each residence is crafted to provide a luxurious and comfortable living experience.

Evora is more than just a residence—it's a lifestyle. Residents have access to a range of exclusive facilities designed to enhance their well-being and convenience: sauna, swimming pool, fully equipped gym and a study room for remote workers.



































# PROPERTY FEATURES



Central VRV air-conditioning system



Photovoltaic system with net metering



Electric vehicle charging provision



Face recognition entry video phone system



Interior design consultation



Secure automated gate for parking



Energy-efficient heat pump boilers







# PREMIUM FINISHES



High-quality European brand sanitary ware



Thermal aluminum lift & slide doors (floor-to-ceiling height)



High ceilings (+3m)



Ambient entrance lighting

# COMMON FACILITIES



Sauna



Swimming pool



Fully equipped gym



Study room for remote work





A close-up, slightly blurred photograph of a hand holding a pencil, pointing at architectural floor plans spread out on a desk. The plans show various rooms and structural elements in different colors like blue, green, and brown. The text 'FLOOR PLANS' is overlaid at the bottom in a large, black, sans-serif font.

# FLOOR PLANS

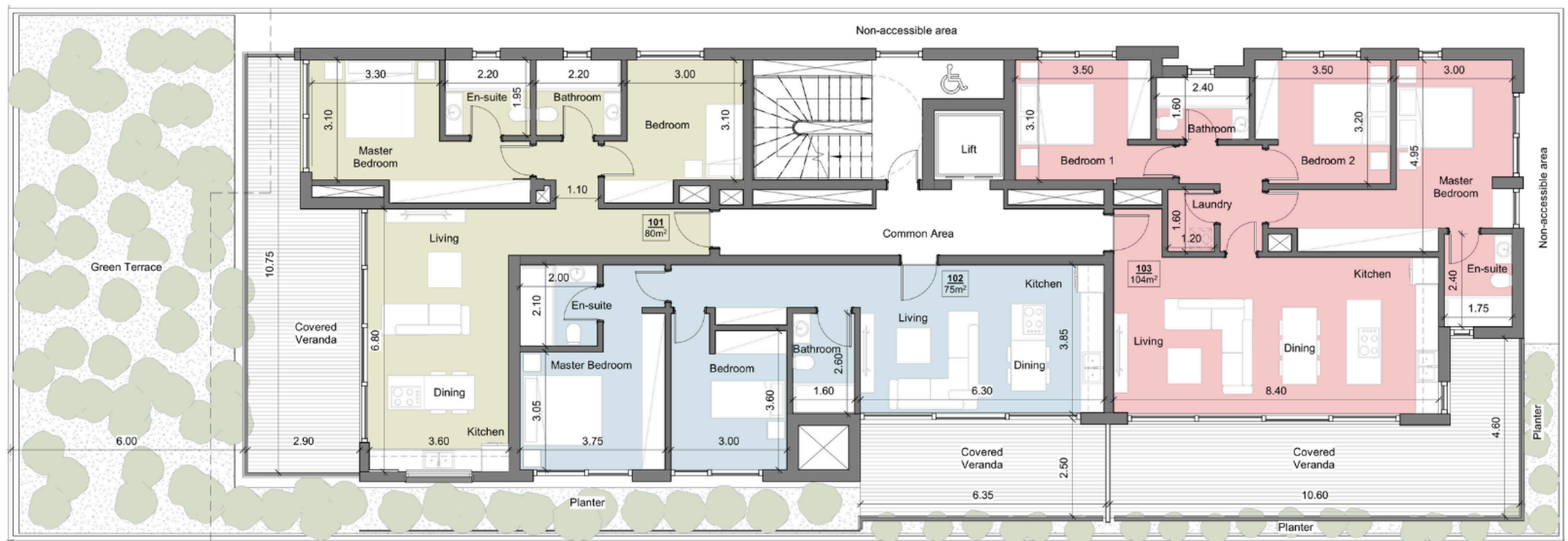
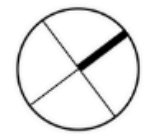


# GROUND FLOOR PLAN

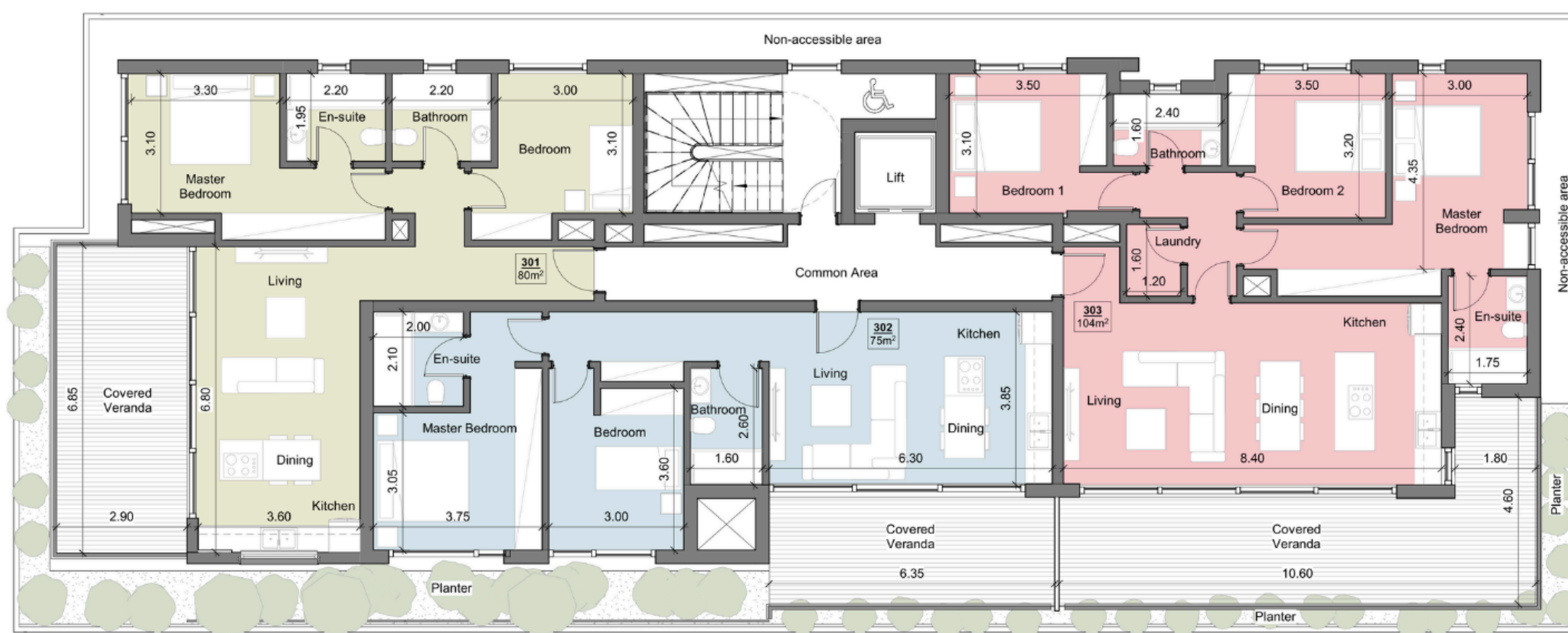




# 1ST FLOOR PLAN

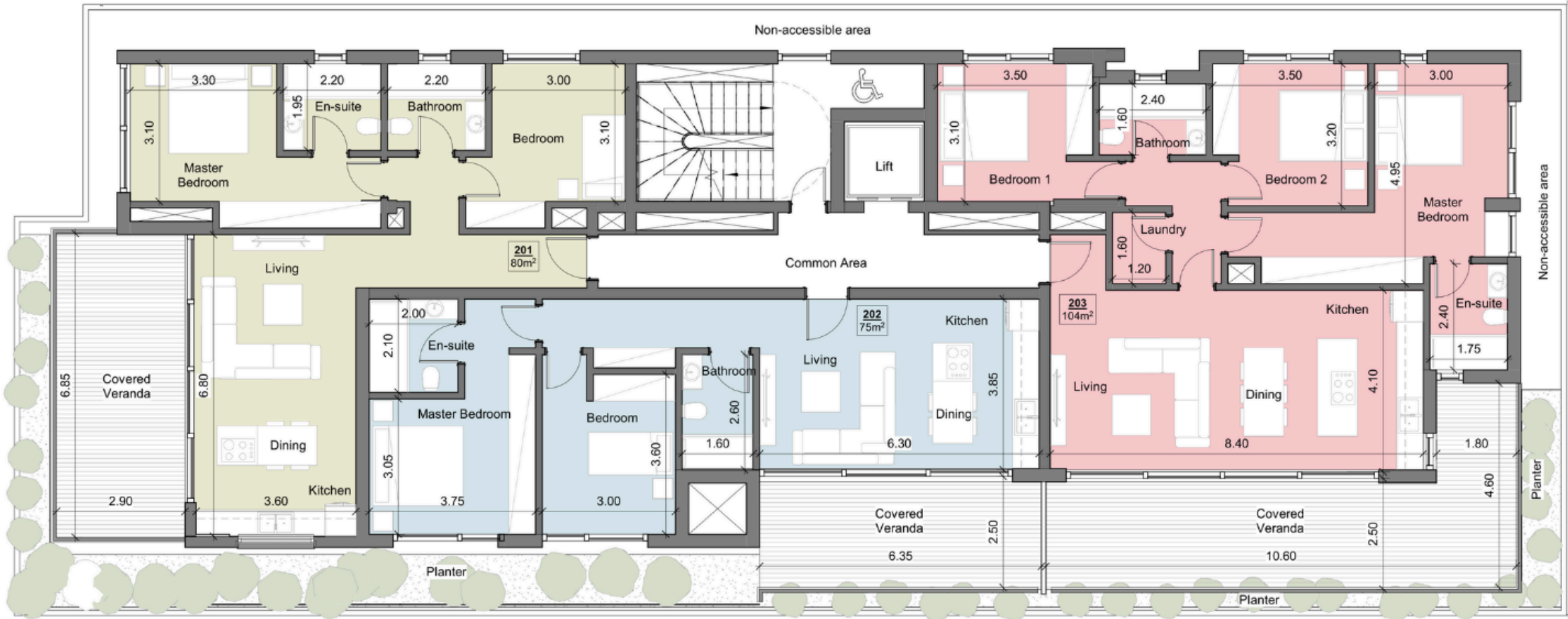






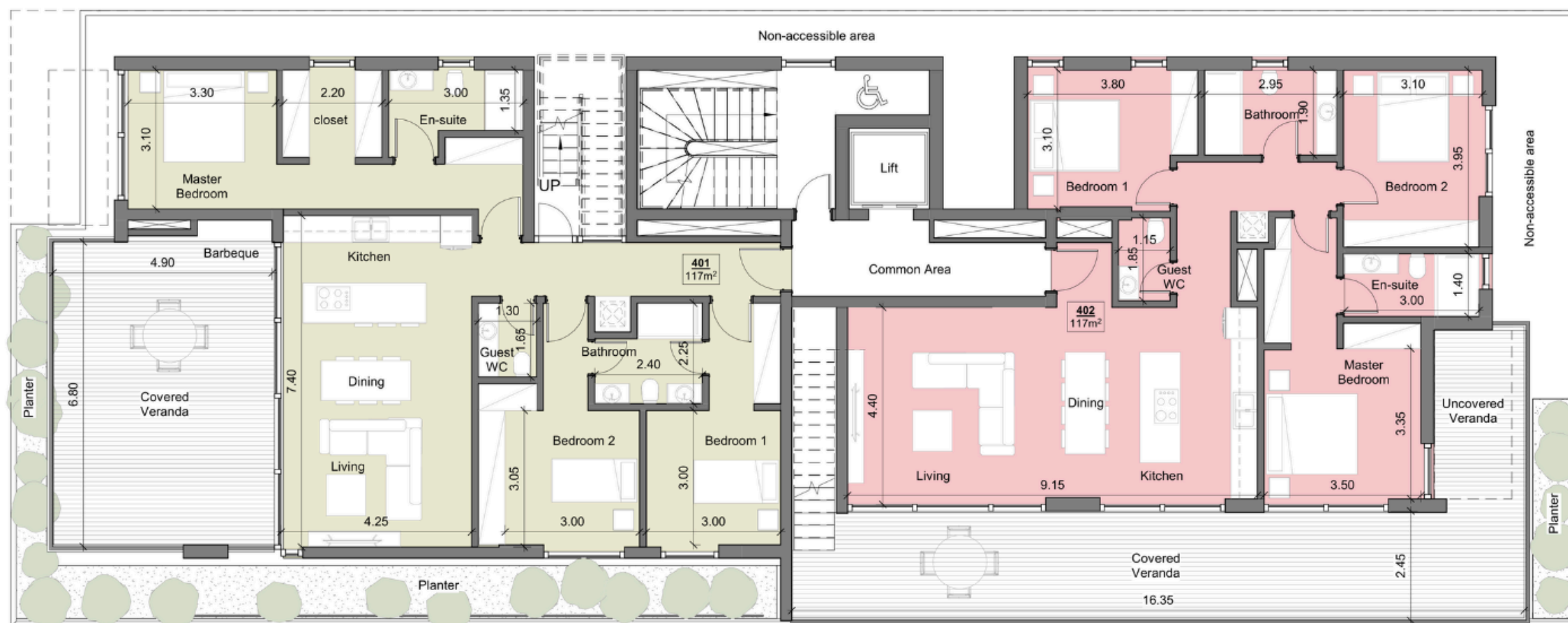
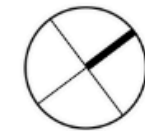


# 3RD FLOOR PLAN



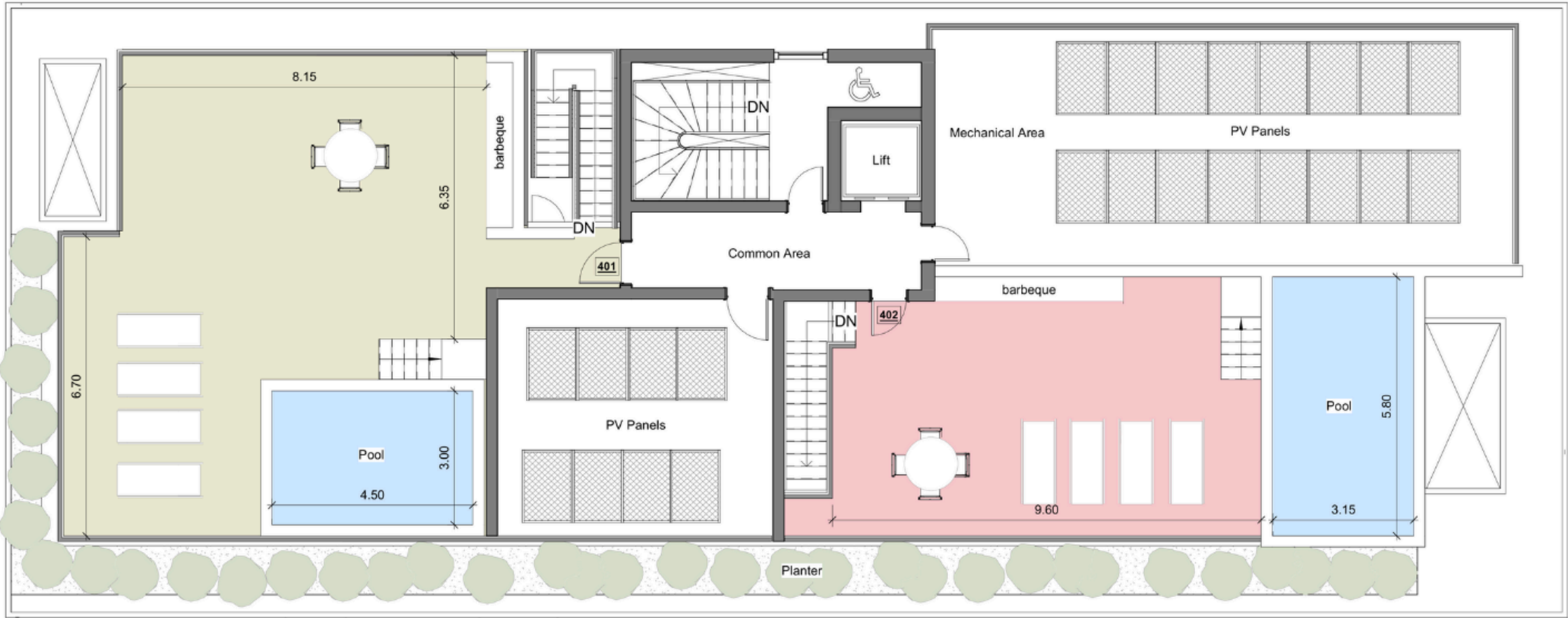


# 4TH FLOOR PLAN





# ROOF GARDEN FLOOR PLAN





## **DOMO PROPERTIES**

Based in Limassol, we take great pride in distinctive projects across the city we love. With a strong focus on functional aesthetics, technology and sustainability we believe we make our customers lives better while protecting this island we call home.

## **OUR PHILOSOPHY**

Spaces and places must have a positive impact on the people who use them and their surroundings. This is why we pursue to develop innovative, elegant and sustainable buildings that celebrate the use of natural light and the latest technologies. We strongly appreciate the importance of social, environmental and economic issues and work hard to address them with a caring approach to the way we design, develop and provision for our developments. The ultimate goal is to deliver life enhancing properties that are beautiful to look at and easy to live with.

For more information please visit us at:  
[www.domoproperties.com](http://www.domoproperties.com)

**DOMO**  
P R O P E R T I E S