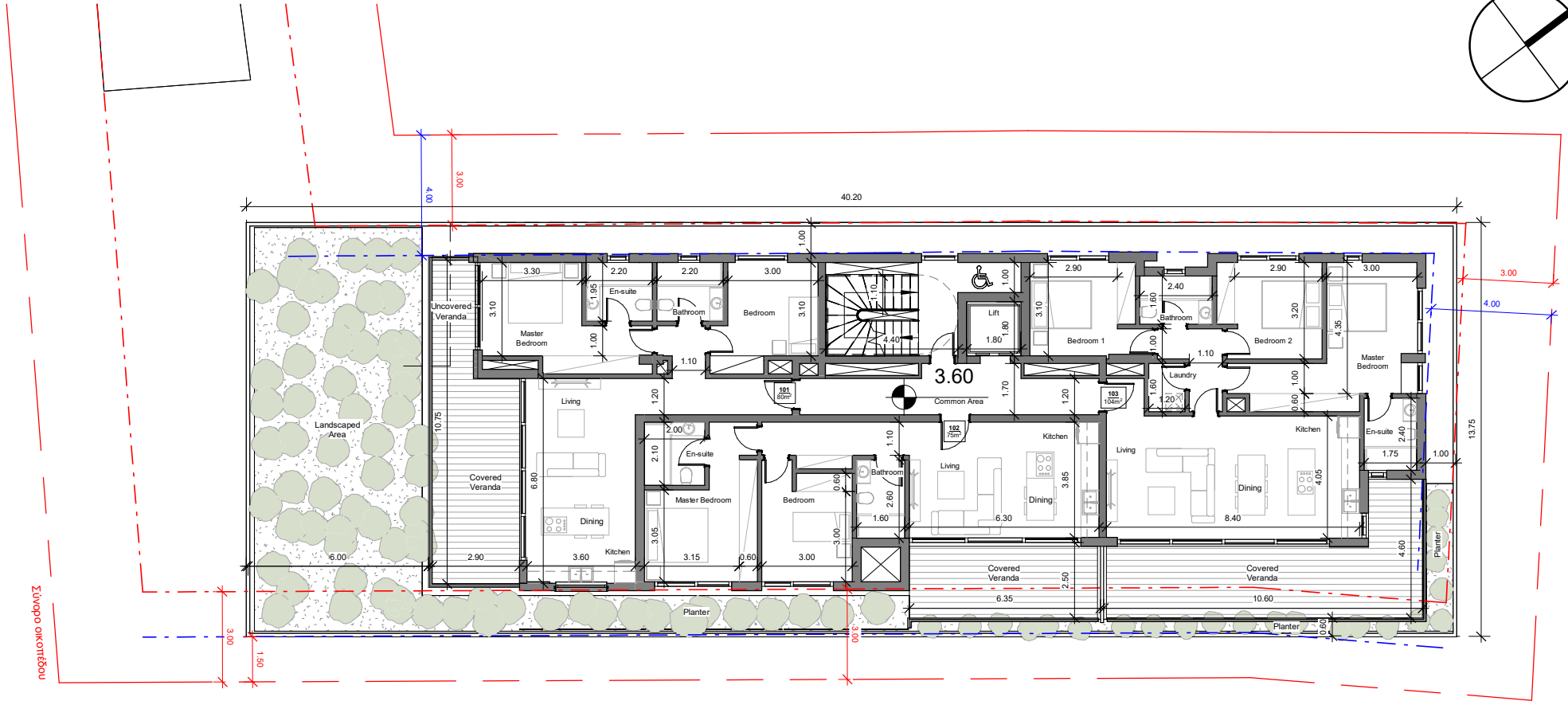
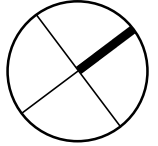


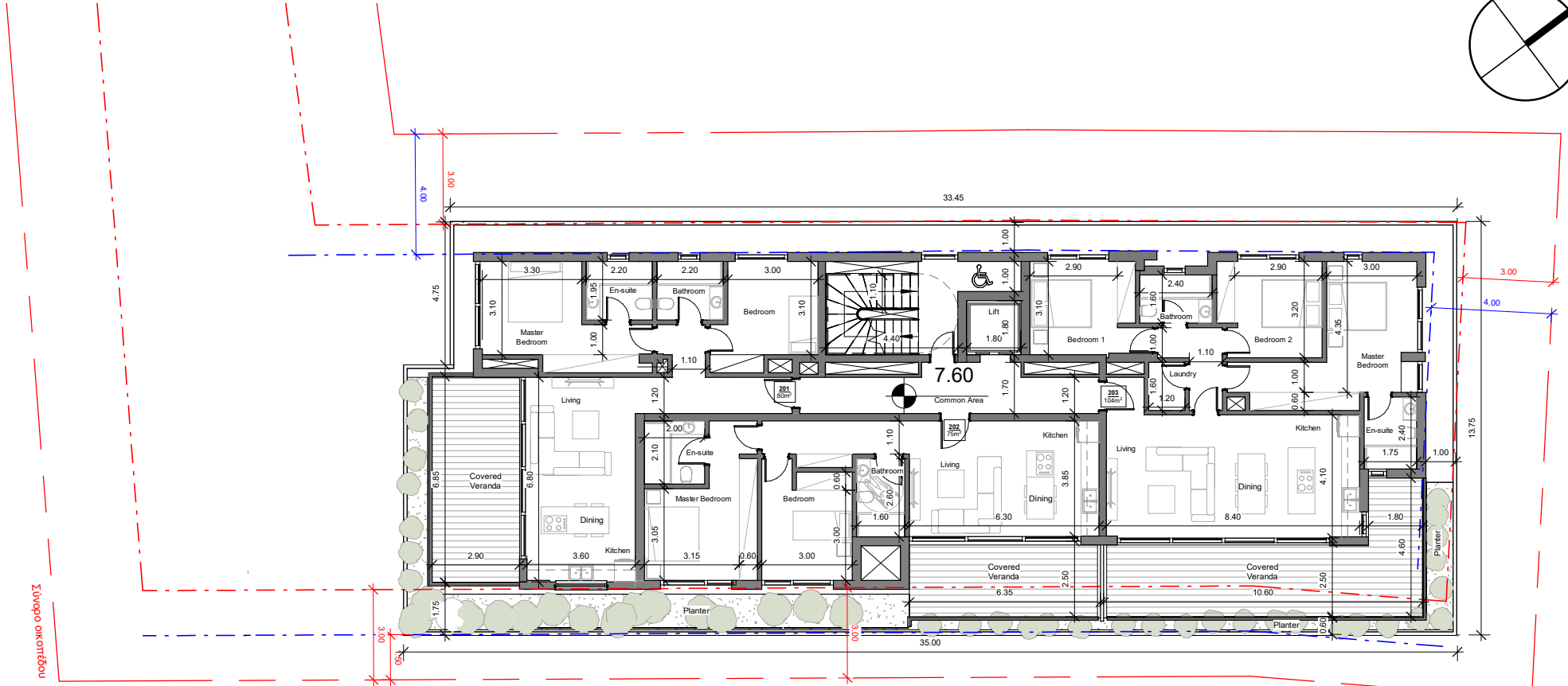
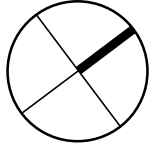
Εμβαδό πλάκας οροφής Ισογείου = 561 m²

Ισόγειο

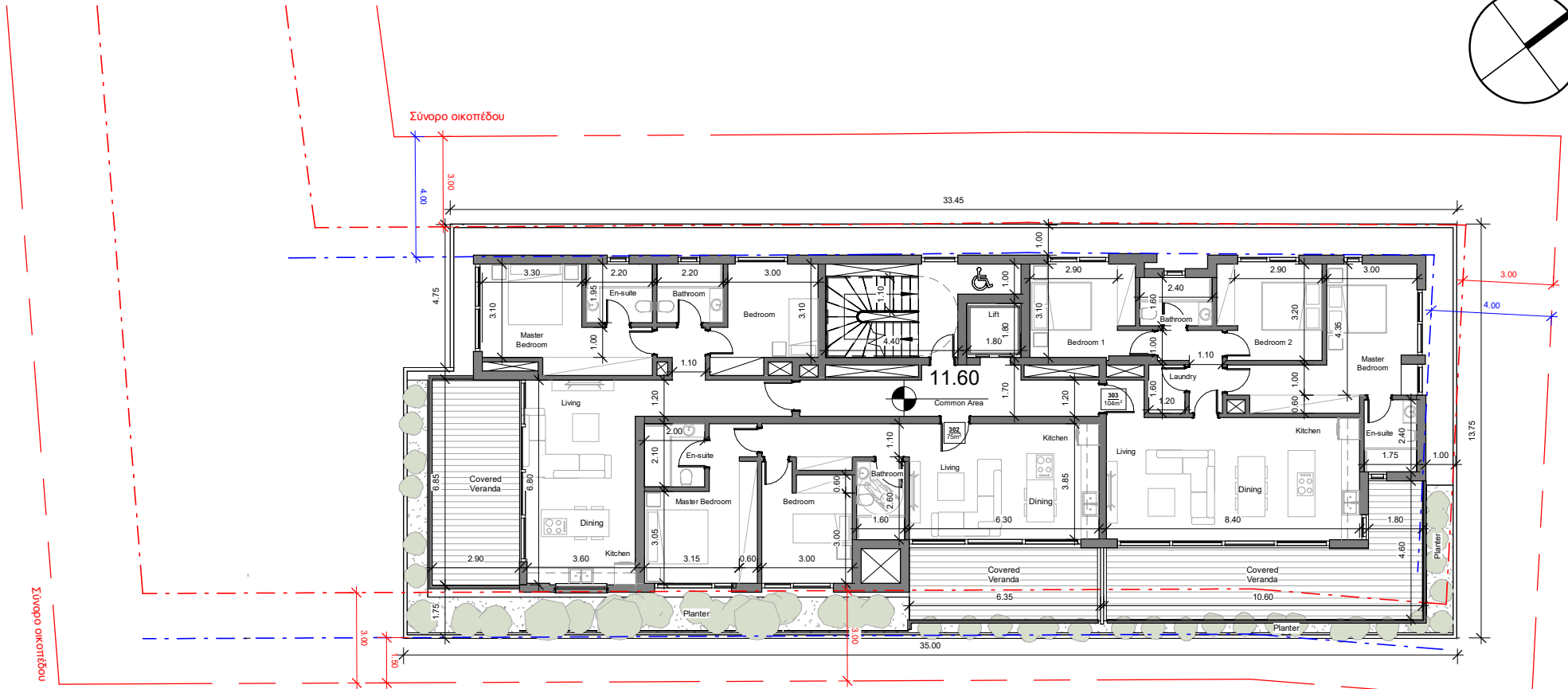
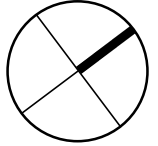
*Σημείωση: Ως 0.00 του έργου ορίζεται το υψόμετρο +35.40



1st Floor

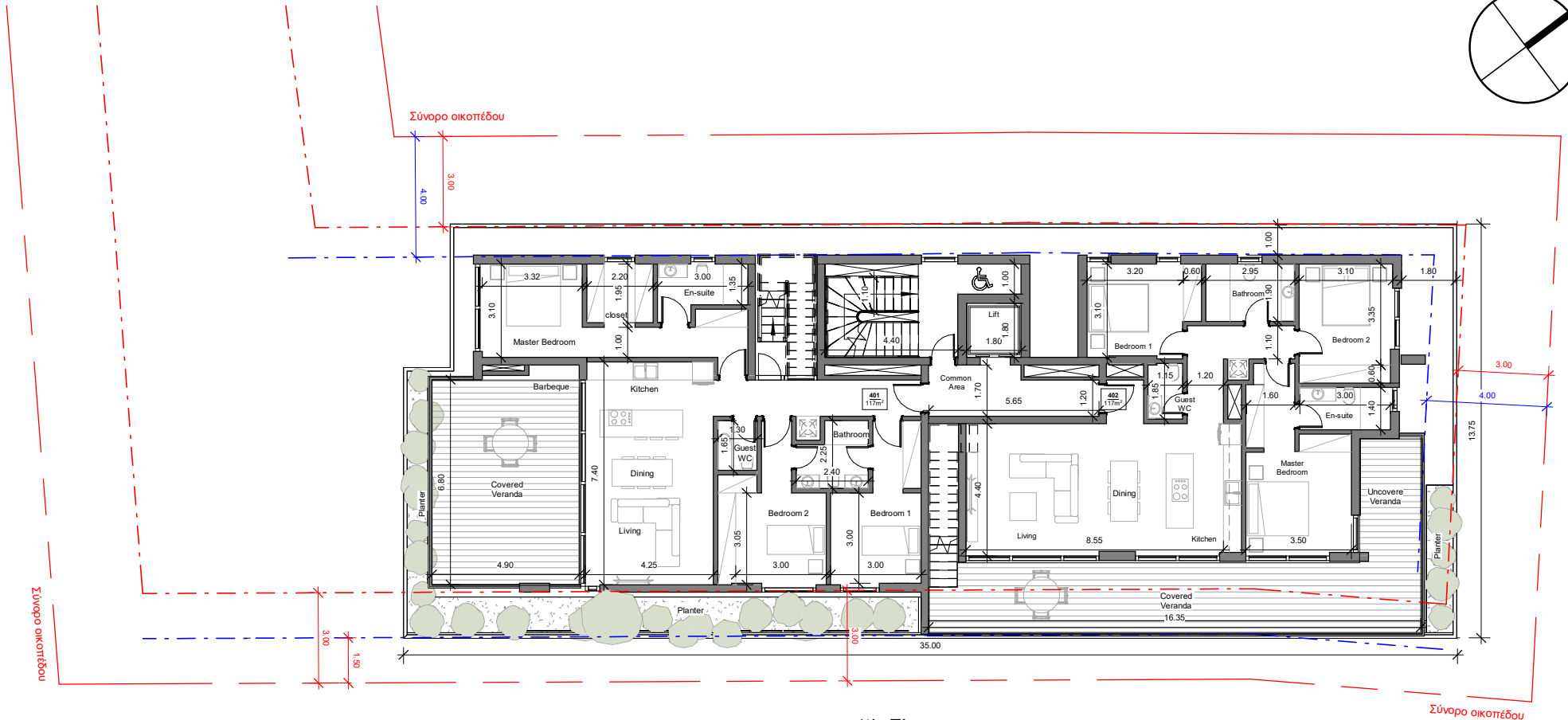
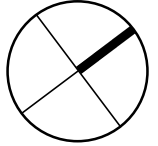


2nd Floor

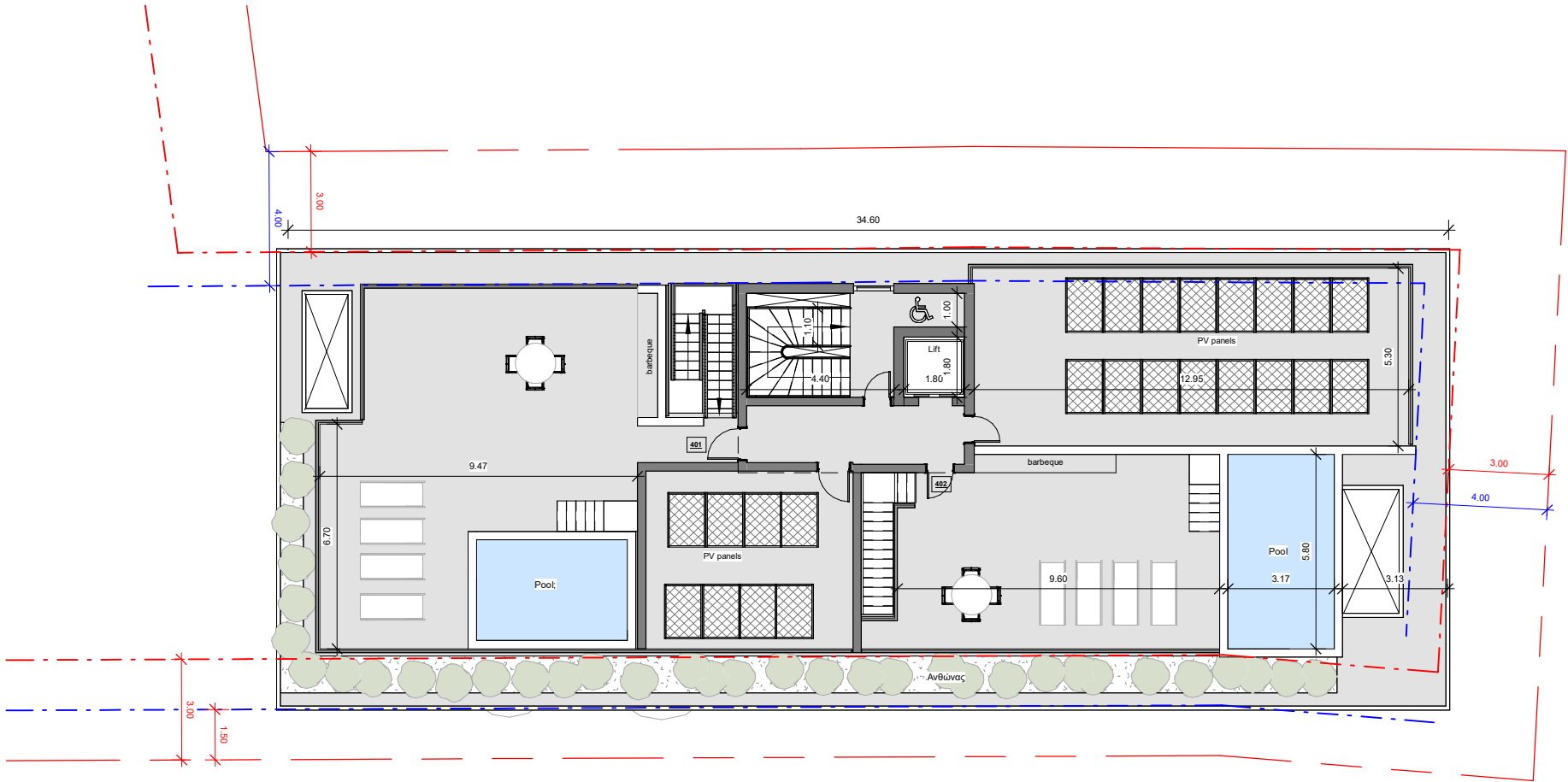


3rd Floor

Σύνορο οικοπέδου



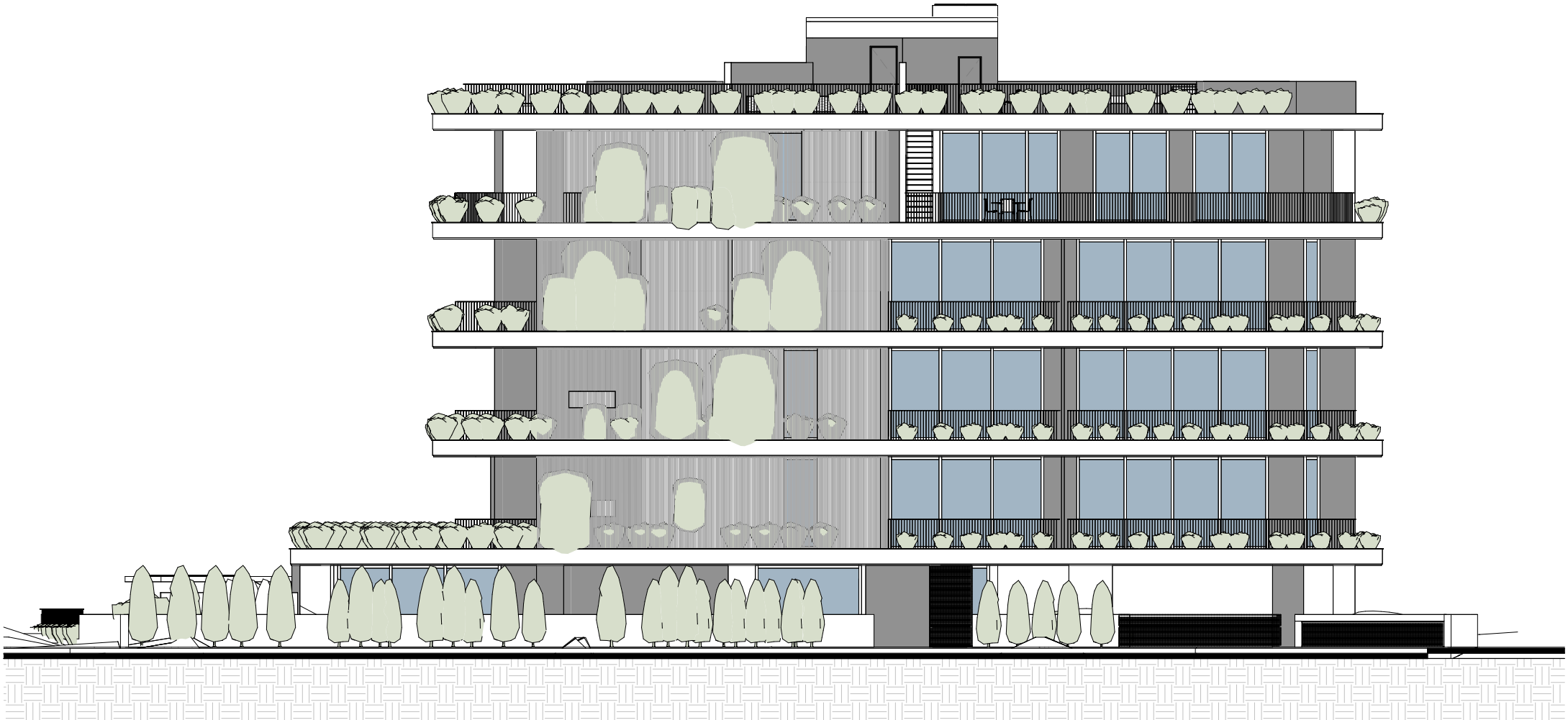
4th Floor



Roof Garden



Roof Plan



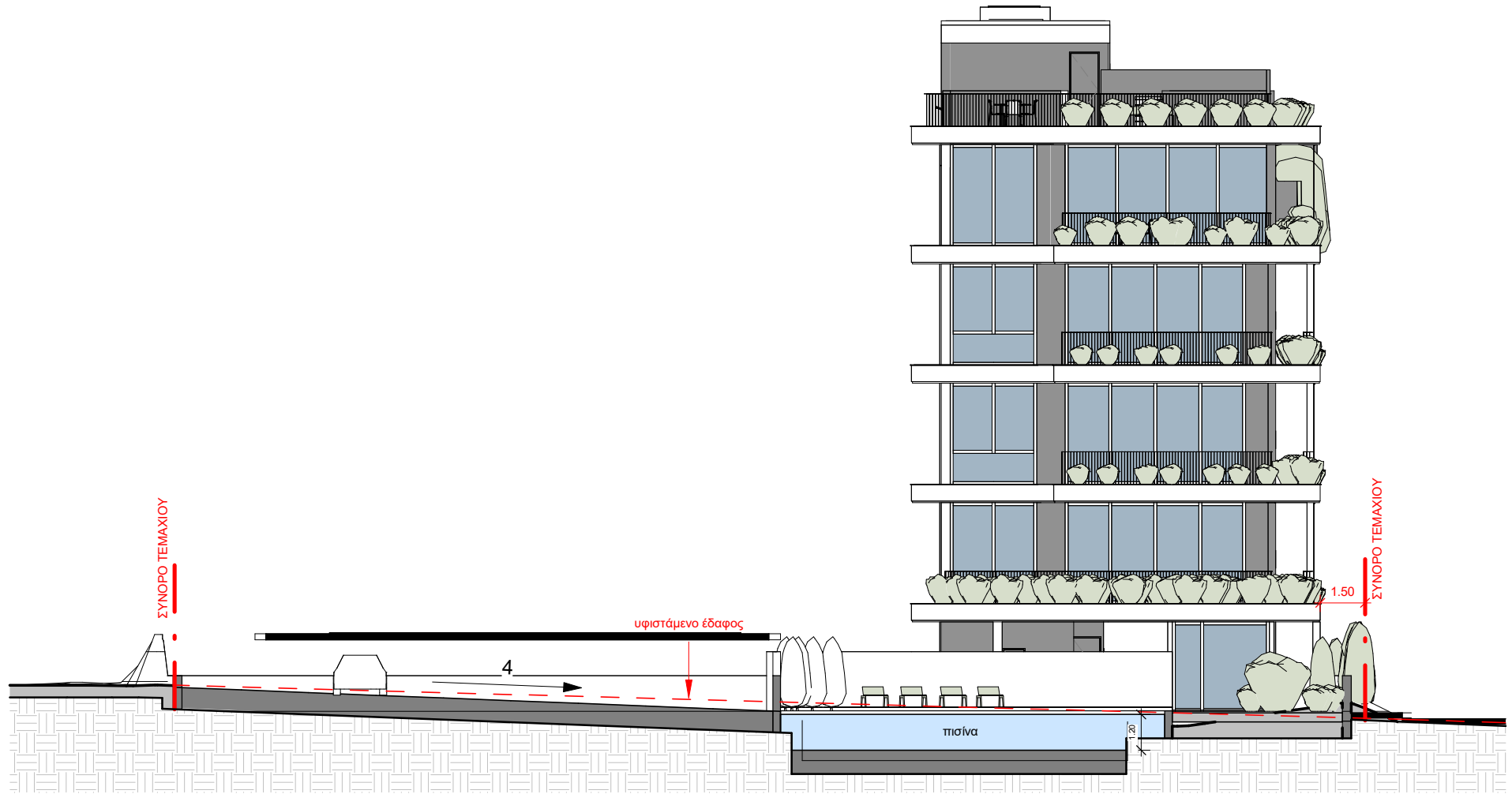
South Elevation



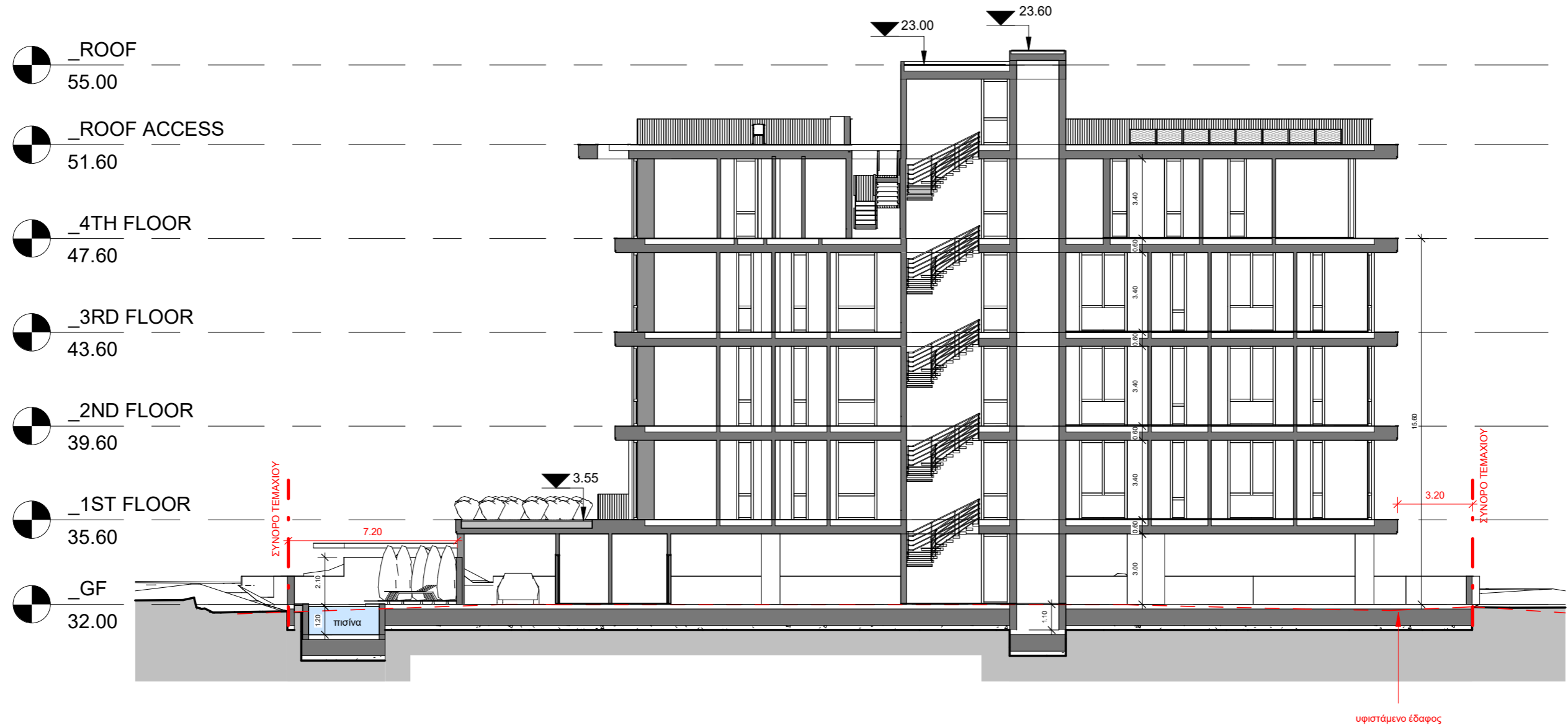
East Elevation



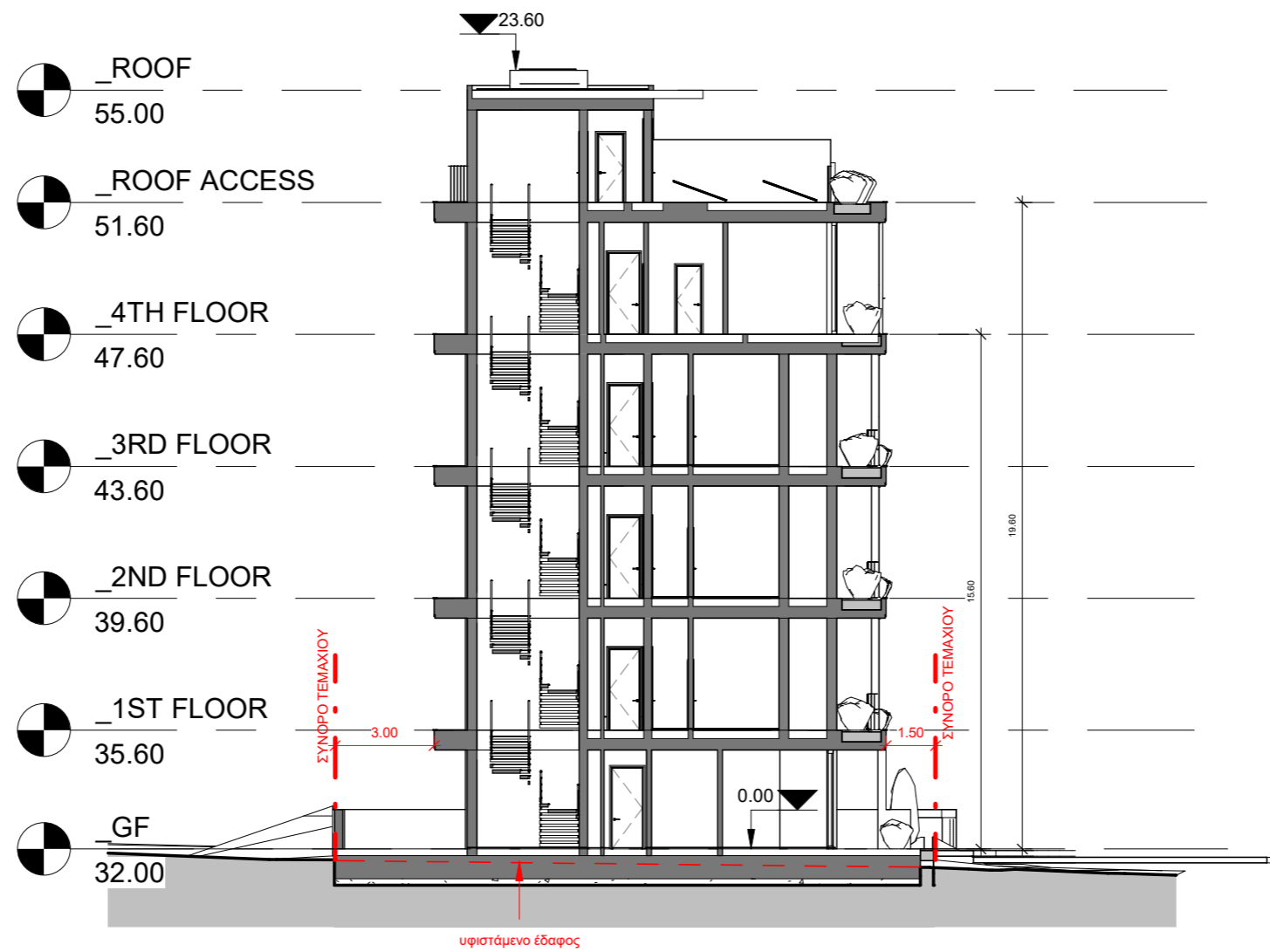
North Elevation



West Elevation



SECTION A



SECTION B