

# DOMO

PROPERTIES



# LIBERTY

HOUSE

# INTRODUCTION

Liberty House is our latest architectural marvel in the heart of Limassol's historical center: a state-of-the-art commercial space that seamlessly integrates cutting-edge design with environmental consciousness.

Offering a unique blend of luxury, functionality, and sustainability this commercial development is not just a workspace but a statement of sophistication and environmental responsibility. It's an ideal locale for discerning businesses looking to thrive in a space that's both modern and mindful of its heritage.



**LIBERTY**  
HOUSE

# THE PROJECT

Liberty House, situated in the historic heart of Old Limassol, merges contemporary architecture with traditional aesthetics.

Making use of a Corten steel façade, Liberty House is a testament to thoughtful design and durability. Its most striking feature, the double-height ground floor lobby, welcomes visitors with a spacious and elegant entrance that showcases sleek vertical lighting and high ceilings, enhancing the open, airy feel.

The interior continues the theme of refined modernity, incorporating minimalist designs with warm wooden accents and polished concrete, complemented by touches of greenery that promote a tranquil atmosphere.

The expansive windows ensure ample natural light, which dynamically interacts with the internal space to create a lively yet peaceful environment.

Functional and versatile, Liberty House features multiple entrances to accommodate a range of business operations, with a rooftop garden that provides a serene escape for leisure and corporate events. Sustainability is a cornerstone of the design, evident in the inclusion of photovoltaic panels to reduce energy consumption.

Combining innovative, eco-friendly design with a deep respect for its historical surroundings, Liberty House not only serves the needs of modern businesses but also contributes significantly to the architectural and environmental landscape of Old Limassol.



**LIBERTY**  
HOUSE

## Plot Details:

Plot Size	Zone	Building Density	Use	Architecture Plans
507 m <sup>2</sup>	Πα8α	140%	Commercial	Yes

## Project Details:

Total	Ground Floor	Mezzanine	First Floor	Roof Covered	Roof Garden	Status	Parking
1045 m <sup>2</sup>	373 m <sup>2</sup>	187 m <sup>2</sup>	420 m <sup>2</sup>	65 m <sup>2</sup>	287 m <sup>2</sup>	Deposited for Planning	3

## Land Registry Details:

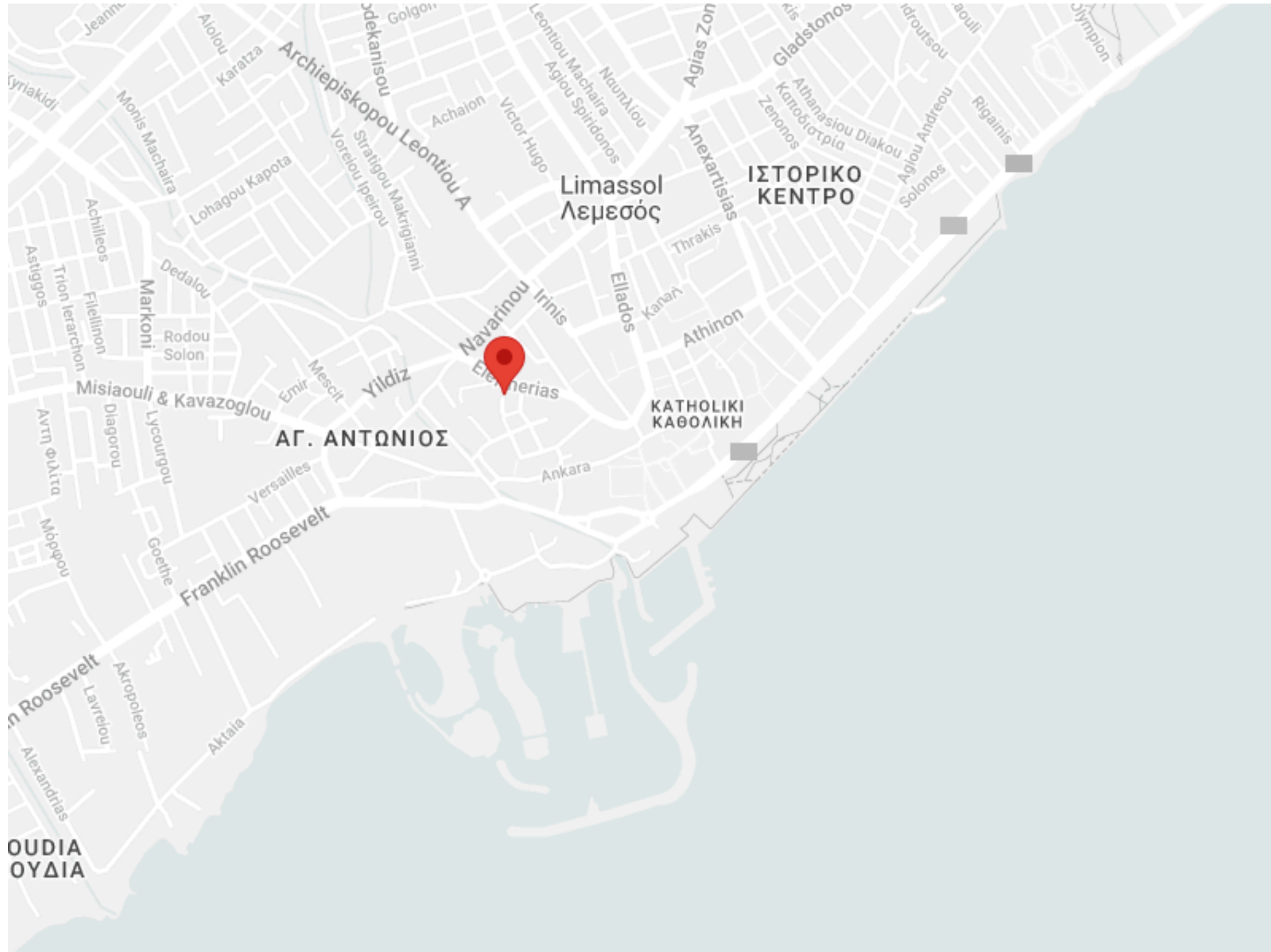
<b>Registration No:</b>	2/62493, 2/62494, 2/62495, 2/62496, 2/62497, 2/62498, 2/62499, 2/62500,
<b>Plot No.</b>	561 - 523

\*All measurements , are approximate figures, and may be subject to change

\* The 3D illustrations of the project are based on the plans deposited and may also be subject to change

\* The building density is derived from the new updated Limassol Local Plan

# THE LOCATION



## POINTS OF INTEREST



### WALK

- Limassol Marina 10min
- Beach 11 min
- Eating out 5-10 min
- Supermarket 10min
- Gladstonos Avenue 13 min

# THE NEIGHBORHOOD



Limassol's Historical Center offers a unique blend of rich heritage and modern vibrancy, making it an ideal location for your business. This charming area, renowned for its picturesque streets and traditional architecture, invites a steady flow of both locals and tourists, ensuring constant foot traffic and exposure for your venture. The historical center, brimming with cultural landmarks and artisanal shops, provides an enchanting backdrop that enhances brand image and customer experience. Being situated here means joining a diverse community of thriving businesses, from quaint cafes to innovative startups, all benefiting from the area's robust infrastructure and supportive local economy. Embrace the opportunity to make your mark in a location where history meets opportunity, and tradition fuses with entrepreneurial spirit. Make Limassol's Historical Center the home for your business and be part of a legacy of success.





# MAIN FEATURES



Central Vrv Air-Condition System & Ventilation System



Raised Floor System



Photovoltaics & Net Metering



Electric Vehicle Charge Station



Superior Thermal Aluminum Sash and Curtain Wall Glazing



High Ceilings\*



Secured Entry with Face Recognition & Video Phone



Interior Design Consultation



Automated Gate for Parking Area

**LIBERTY**  
HOUSE

A person is sitting at a desk, working on a computer. The computer monitor displays a 3D architectural model of a building's structural framework, showing a grid of steel beams and columns. The person's hands are visible, one on a mouse and the other on a keyboard. The background is a plain, light-colored wall.

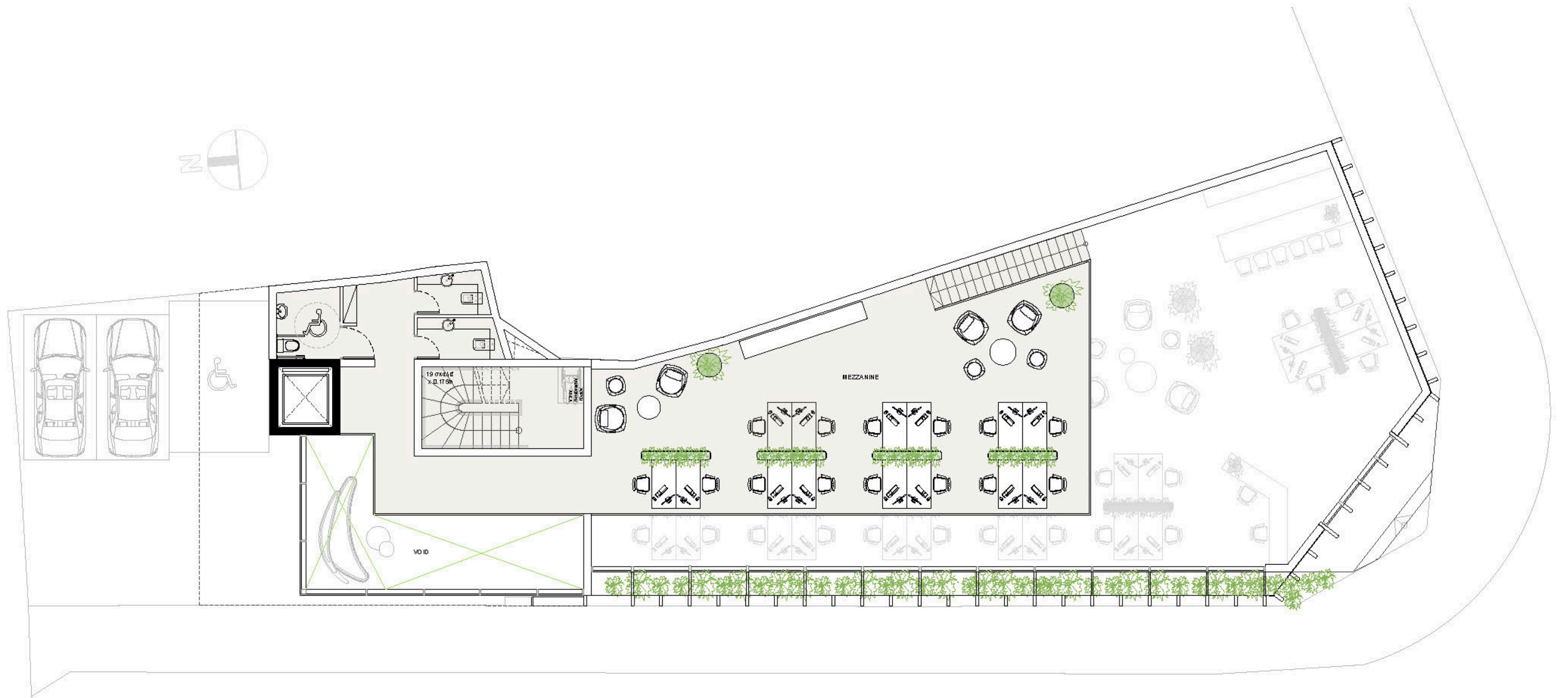
# FLOOR PLANS



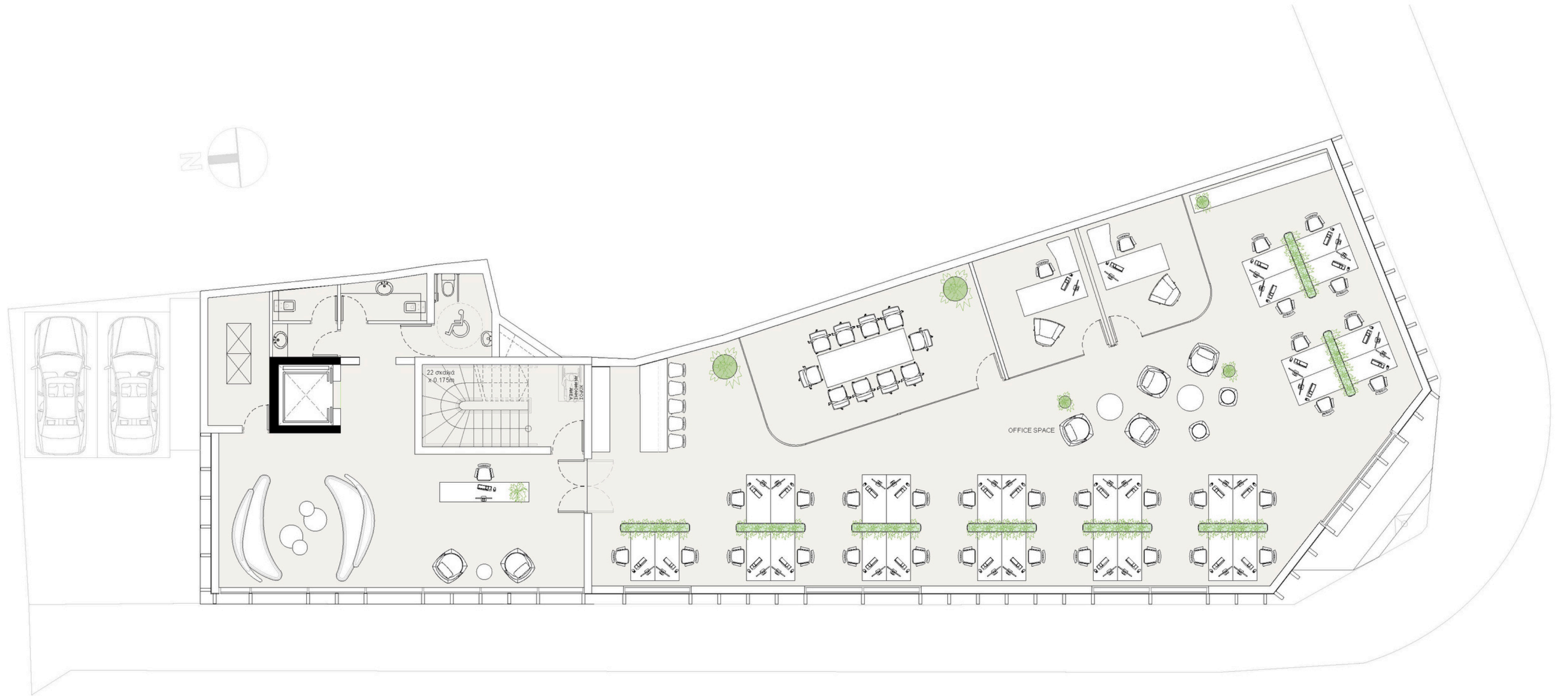
# GROUND FLOOR



# MEZZANINE FLOOR



# FIRST FLOOR



## **DOMO PROPERTIES**

Based in Limassol, we take great pride in distinctive projects across the city we love. With a strong focus on functional aesthetics, technology and sustainability we believe we make our customers lives better while protecting this island we call home.

## **OUR PHILOSOPHY**

Spaces and places must have a positive impact on the people who use them and their surroundings. This is why we pursue to develop innovative, elegant and sustainable buildings that celebrate the use of natural light and the latest technologies. We strongly appreciate the importance of social, environmental and economic issues and work hard to address them with a caring approach to the way we design, develop and provision for our developments. The ultimate goal is to deliver life enhancing properties that are beautiful to look at and easy to live with.

For more information please visit us at:  
[www.domoproperties.com](http://www.domoproperties.com)

**DOMO**  
P R O P E R T I E S