

DOMO
PROPERTIES



VENIZ
— RESIDENCE —



DOMO
PROPERTIES

Nestled in the heart of Limassol's bustling city center, Veniz Residence is a testament to the perfect fusion of contemporary design and convenient urban living.

With just 7 exquisite park-view apartments spread across 4 floors, our unique development offers a truly exceptional residential experience.

Every element of Veniz Residence has been meticulously crafted to cater to the needs of modern city dwellers, from its prime location to its impeccable design and high-quality materials.



VENIZ

A COSMOPOLITAN EXPANSE

Veniz Residence is ideally situated just a stone's throw away from the bustling Makariou street, west of Lanitio area.

This central location ensures that everything you need is within easy reach. Here, you'll find yourself in close proximity to esteemed schools, lush parks, supermarkets stocked with the finest goods, charming cafes, and a myriad of other essential amenities.

The convenience of this location is second to none, making it the perfect choice for families, professionals, and anyone looking to immerse themselves in the vibrant heart of Limassol.





VENIZ
— RESIDENCE —





WALK

- Bank 2 min
- Bakery 5 min
- Schools 5 min
- Supermarket 4 min
- Makariou Avenue 1 min



DRIVE

- Limassol Marina 8 min
- Ygia Polyclinic 4 min
- Motorway 8 min
- Beach 7 min
- Historical center 5 min

THE NEIGHBORHOOD



LIFESTYLE

Veniz Residence offers a serene sanctuary amidst the lively pulse of this dynamic city. Just a leisurely one-minute stroll will lead you to the illustrious Makariou Avenue, where you'll discover a treasure trove of upscale boutiques, charming cafes, and enticing bistros, all ready to be explored.

MARKETS & BAKERIES

A short walk in the neighborhood will lead you to all your essential needs. Wander over to the ERA and Sklavenitis superstores for your grocery shopping, and then meander through the colorful array of local markets and bakeries, where you can indulge in everything from handcrafted artisan bread to your daily must-haves.



SCHOOLS & HOSPITALS

Within a short distance from Veniz Residence, you'll find two highly regarded public schools and a range of private kindergartens. Additionally, the renowned Ygia Polyclinic is just a few minutes' drive from the residence, accompanied by several pharmacies and private medical practitioners nearby.

CONTEMPORARY DESIGN



Veniz Residence is a haven of design and comfort; the apartments boast a modern aesthetic and are meticulously constructed with high-quality materials. Each apartment offers an unparalleled living experience, with contemporary finishes and thoughtful design elements.

The apartments at Veniz Residence are bathed in natural light, offering a sense of airiness and spaciousness. The open-plan layout seamlessly combines the living, dining, and kitchen areas, creating a dynamic space perfect for both relaxation and entertainment.

The apartments feature ample storage, functional kitchen designs, and high-end fixtures throughout. As a resident of Veniz Residence, you'll enjoy the pleasure of having a private oasis within the city with park views.





















MAIN FEATURES



Central Vrv Air-Condition System



Photovoltaics & Net Metering for Each Apartment



Electric Vehicle Charge Provision for Each Apartment



Thermal Aluminum Lift & Slide - Floor-to-ceiling height doors



High Ceilings: +3m height



Face Recognition Entry Video Phone



Interior Design Consultation



Automated Gate for Parking Area



Wifi Controlled Water Heater

The background of the image is a blurred collage of architectural drawings. In the upper right, there is a 3D perspective rendering of a modern building's interior, showing a hallway with a blue wall, a wooden bench, and a person walking. Below and to the left of this are various 2D architectural floor plans, including a detailed grid-based layout and a more schematic diagram. The overall image is out of focus, creating a sense of depth and a professional, design-oriented atmosphere.

FLOOR PLANS

GROUND FLOOR PLAN



1ST FLOOR PLAN



APT	FLOOR	NO. of BEDROOMS	COVERED AREA	COVERED VER.	ROOF GARDEN	COMMON AR.	TOTAL AREA	COV. PARKINGS
101	1	1	53.5m2	17.0m2.		6.15m2	76.65m2	1
102	1	2	81.35m2	20.4m2.		9.35m2	111.11m2	1

2ND FLOOR PLAN



APT	FLOOR	NO. of BEDROOMS	COVERED AREA	COVERED VER.	ROOF GARDEN	COMMON AR.	TOTAL AREA	COV. PARKINGS
201	2	2	82.80m ²	17.9m ² .		9.52m ²	110.20m ²	1
202	2	2	81.35m ²	17.9m ² .		9.35m ²	108.60m ²	1

3RD FLOOR PLAN



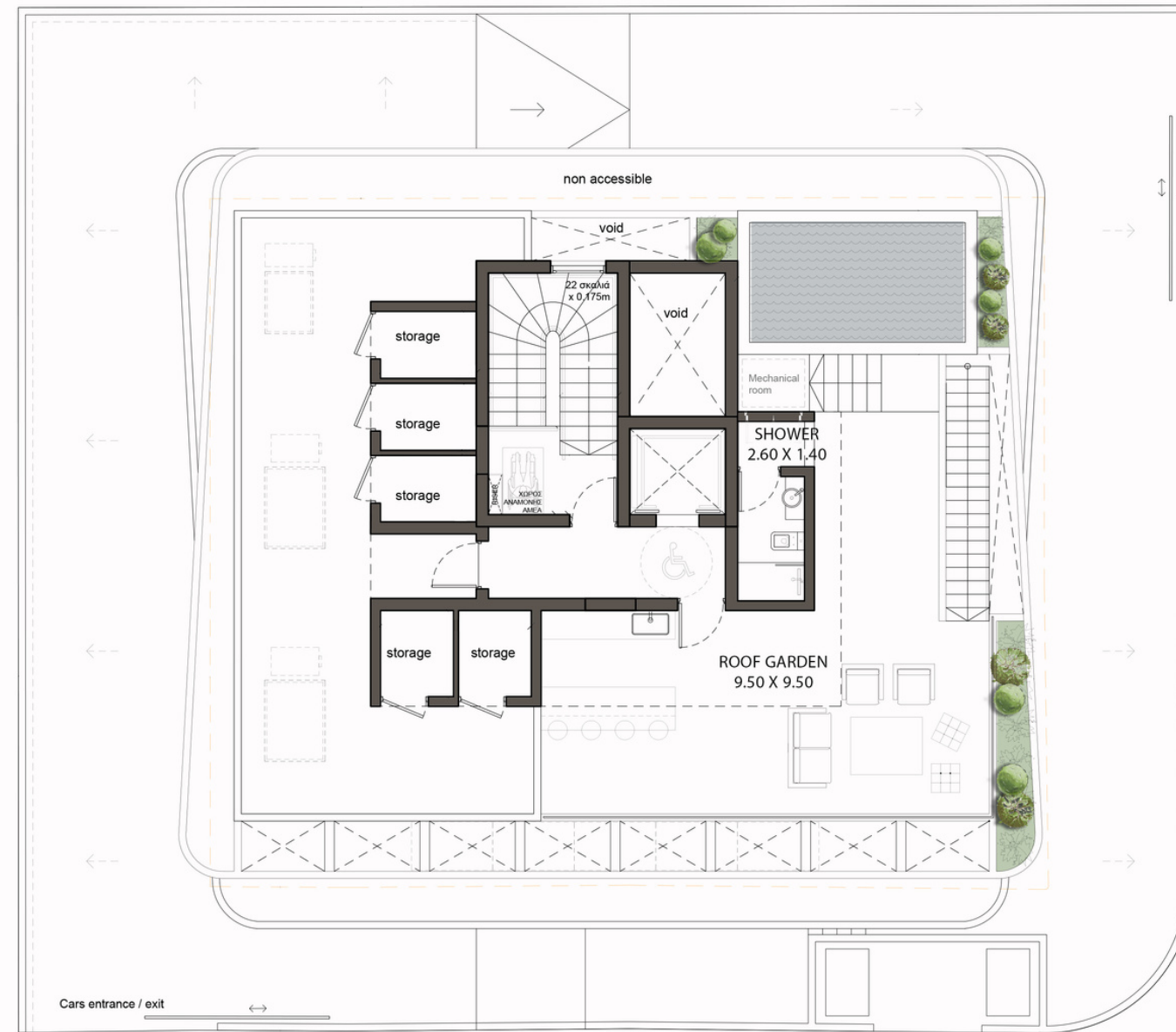
APT	FLOOR	NO. of BEDROOMS	COVERED AREA	COVERED VER.	ROOF GARDEN	COMMON AR.	TOTAL AREA	COV. PARKINGS
301	3	2	82.80m2	17.7m2.		9.52m2	110.00m2	1
302	3	2	81.35m2	20.4m2.		9.36m2	111.11m2	1

4TH FLOOR PLAN



APT	FLOOR	NO. of BEDROOMS	COVERED AREA	COVERED VER.	ROOF GARDEN	COMMON AR.	TOTAL AREA	COV. PARKINGS
401	4	3	125.4m ²	38.5m ²	91.6m ²	7.9m ²	171.8m ²	2

ROOF GARDEN PLAN



DOMO PROPERTIES

Based in Limassol, we take great pride in distinctive projects across the city we love. With a strong focus on functional aesthetics, technology and sustainability we believe we make our customers lives better while protecting this island we call home.

OUR PHILOSOPHY

Spaces and places must have a positive impact on the people who use them and their surroundings. This is why we pursue to develop innovative, elegant and sustainable buildings that celebrate the use of natural light and the latest technologies. We strongly appreciate the importance of social, environmental and economic issues and work hard to address them with a caring approach to the way we design, develop and provision for our developments. The ultimate goal is to deliver life enhancing properties that are beautiful to look at and easy to live with.

For more information please visit us at:
www.domoproperties.com

DOMO
P R O P E R T I E S