

DOMO
PROPERTIES

nuvola

nuvola



DOMO
PROPERTIES

Nuvola Residence presents a selection of 11 superb units situated on the most elevated side of the distinctive Columbia area in Limassol.

The project embodies the best of contemporary living that remains coherent with beautiful and practical spaces and high quality materials.

The overall residential mass is primarily southward looking with uninterrupted picturesque views of greenery, sea, sunlight and priceless moments.



A COSMOPOLITAN EXPANSE



Columbia area is certainly one of Limassol's most cosmopolitan areas with many affluent international citizens choosing this part of the city to call home.

This modern neighborhood is pampered with modern residences, parks and safe spaces for afternoon walks and leisure.

The charm with this locality is that this contemporary and serene setting is placed close to both the beachfront and the epicenter of the city.

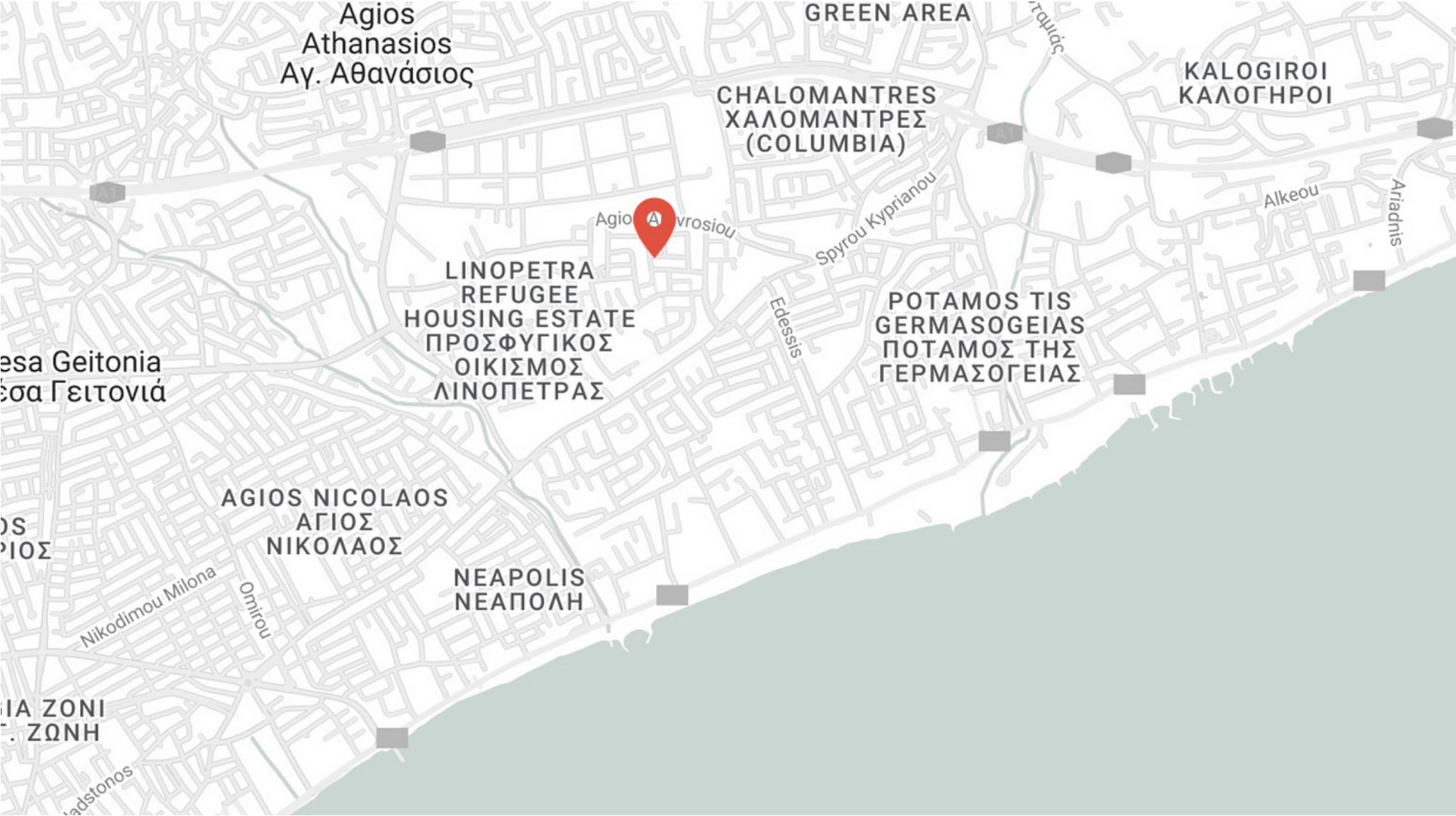
Limassol is literally at your feet with 10' minute walks from schools, primary services, the high street or the scenic coast.



nuvola



nuvola



WALK

- Bank 6 min
- Bakery 5 min
- Schools 7 min
- Supermarket 6 min
- Kolonakiou Avenue 7 min



DRIVE

- Beach 5 min
- Jumbo 3 min
- Motorway 4 min
- New York Sweets 4 min
- Jumbo 3 min
- St Raphael Marina 7 min

THE NEIGHBORHOOD



LIFESTYLE

Columbia provides an oasis-like retreat in the middle of the hustle and bustle of this vibrant city. Yet, a five minute stroll will bring you to the prominent Kolonakiou Avenue where exclusive boutiques, cafés and attractive bistros are all there for the taking.

MARKETS & BAKERIES

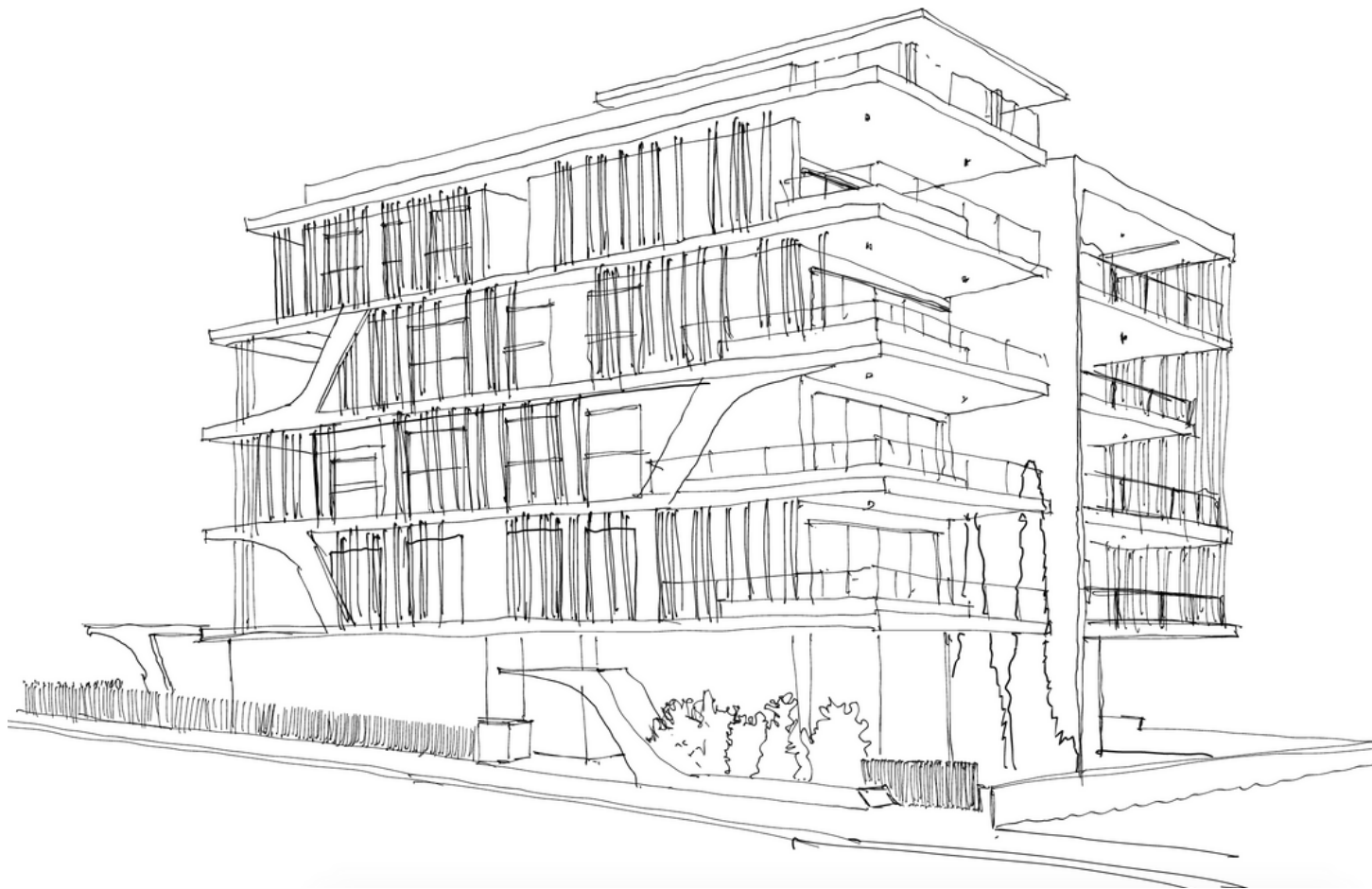
Just a few blocks away on the south side you'll find any primary amenities. Here you can stock up at Sklavenitis or Papas superstores before browsing the vast selection of local markets and bakeries providing everything from artisan bread to everyday essentials.



SCHOOLS & HOSPITALS

A well respected public primary school and other private schools are within a short drive. The Linopetra Medical Center is also a minute drive away from the premises - along with numerous pharmacies and health stores.

CONTEMPORARY DESIGN



Nuvola exudes minimal sophistication and organic individuality. It was designed to embrace the view and create an open feel using a mixture of light and shading to mirror the natural world outside.

All apartments are designed and built to the highest standards with all the advantages of modern living. High ceilings, hidden LED lighting and ceiling mounted A/C units are some of the criteria used to experience an unparalleled luxury lifestyle.

Each apartment is also designed for day-to-day convenience. Bright, airy living spaces for people to live in, to laugh in and to write their own stories.

nuvola



nuvola



nuvola



nuvola



nuvola



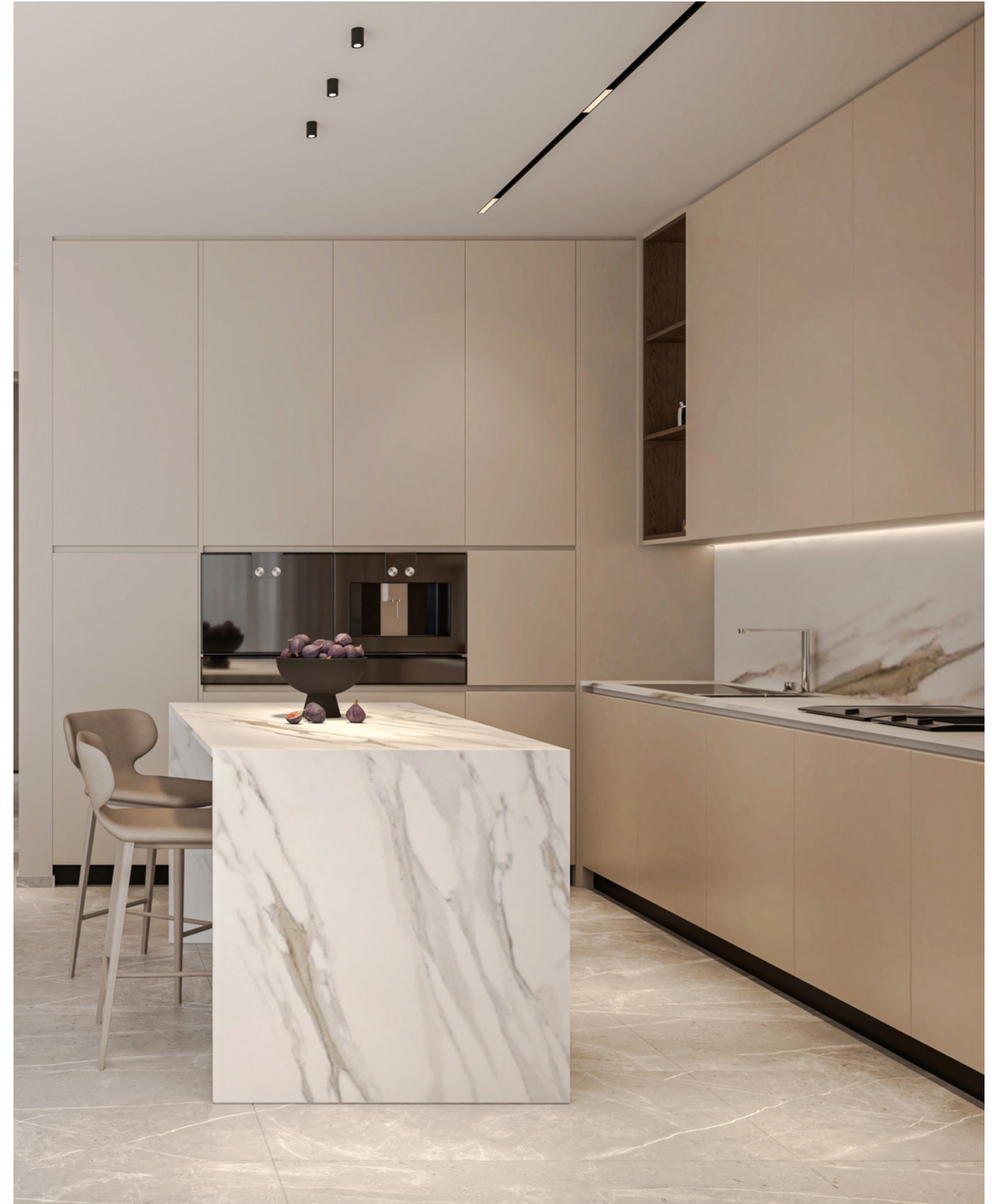
nuvola



nuvola



nuvola



nuvola



nuvola



nuvola



MAIN FEATURES



Central VrV Air-Condition System



Photovoltaics & Net Metering for Each Apartment



Electric Vehicle Charge Provision for Each Apartment



Thermal Aluminum Lift & Slide - Floor-to-ceiling height doors



High Ceilings: +3m height



Face Recognition Entry Video Phone



Interior Design Consultation

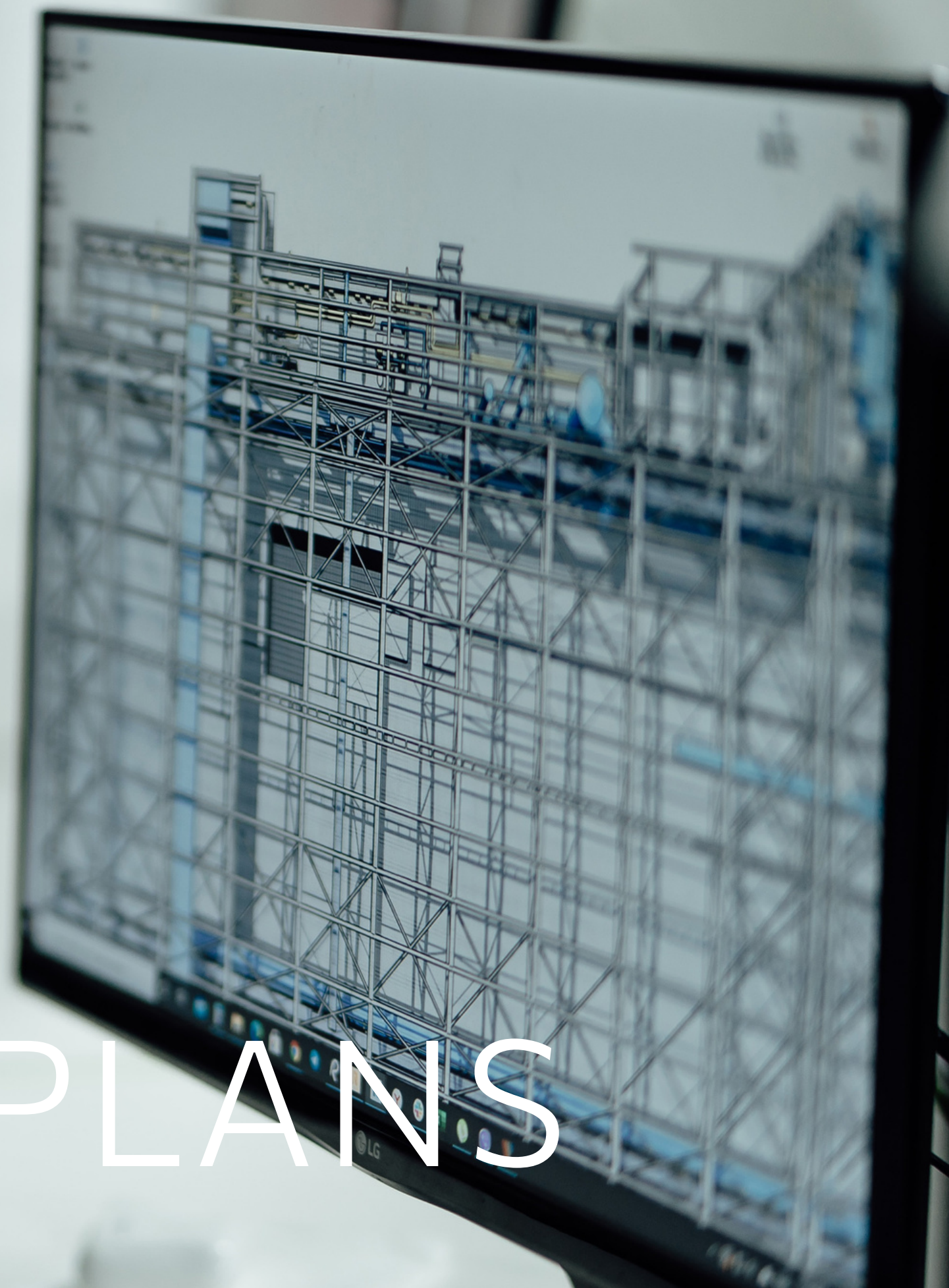


Automated Gate for Parking Area



Wifi Controlled Water Heater

FLOOR PLANS



GENERAL FLOOR PLAN



GENERAL FLOOR

APARTMENTS 101, 201 & 301

101/ 201/ 301



APARTMENTS 102, 202 & 302

102/ 202/ 302



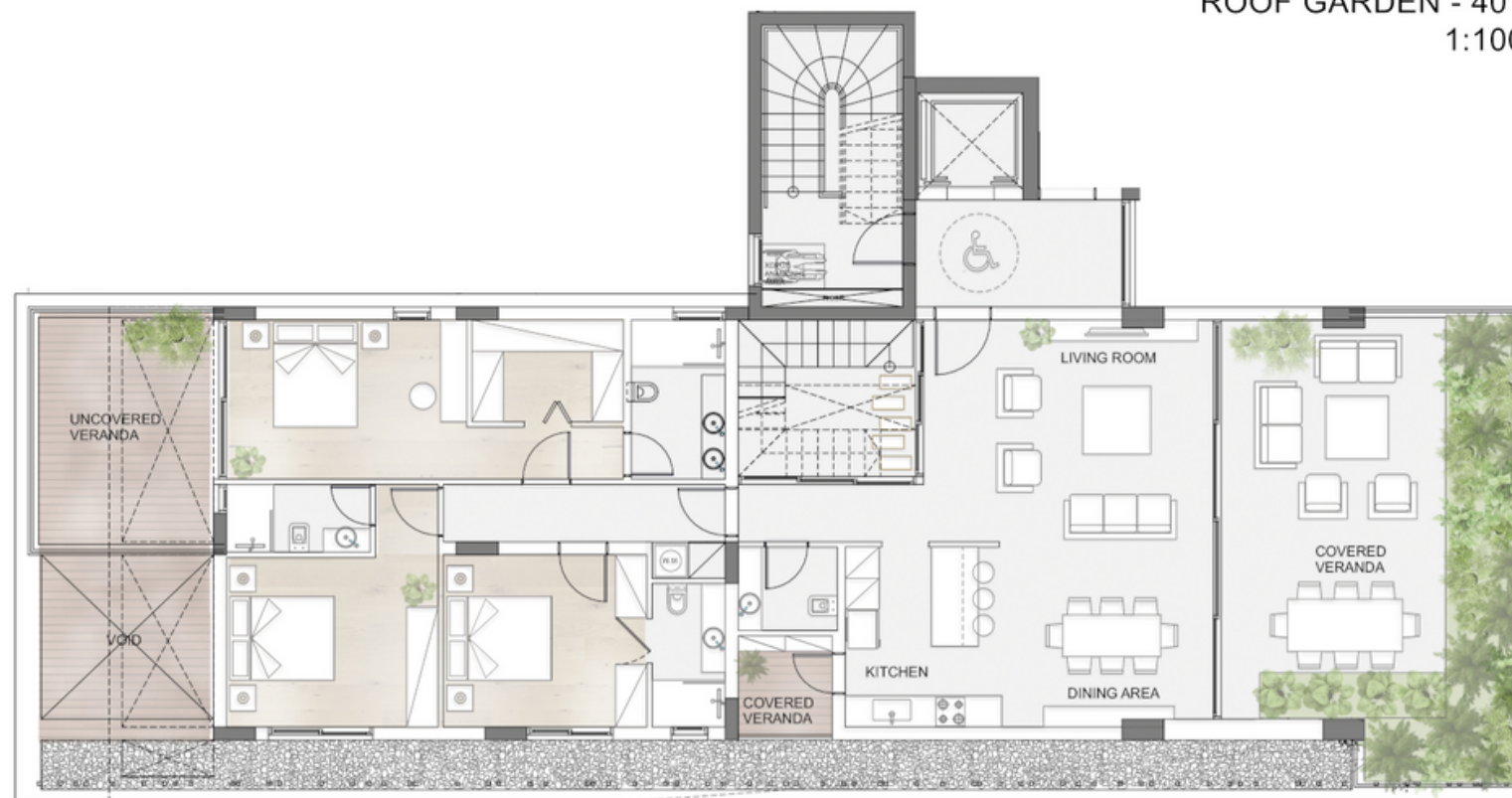
APARTMENTS 103, 203 & 303



APARTMENT 401



ROOF GARDEN - 401
1:100



FOURTH FLOOR - 401
1:100

APARTMENT 402



DOMO PROPERTIES

Based in Limassol, we take great pride in distinctive projects across the city we love. With a strong focus on functional aesthetics, technology and sustainability we believe we make our customers lives better while protecting this island we call home.

OUR PHILOSOPHY

Spaces and places must have a positive impact on the people who use them and their surroundings. This is why we pursue to develop innovative, elegant and sustainable buildings that celebrate the use of natural light and the latest technologies. We strongly appreciate the importance of social, environmental and economic issues and work hard to address them with a caring approach to the way we design, develop and provision for our developments. The ultimate goal is to deliver life enhancing properties that are beautiful to look at and easy to live with.

For more information please visit us at:
www.domoproperties.com

DOMO
P R O P E R T I E S