

DOMO
PROPERTIES

CLOUD
RESIDENCE



CLOUD
RESIDENCE



DOMO
PROPERTIES

Cloud9 is a new residential project of 8 apartments, located in the vibrant heart of Limassol, in Lanitio area.

This project is a testament to modern architecture, meticulously crafted with the highest quality materials, combining practical spaces with a visually appealing design.

The 3-floor building predominantly faces southwest, providing a steady view of green landscapes, and sunlight.



CLOUD

A COSMOPOLITAN EXPANSE

Cloud9 is nestled in the Lanitio area of Limassol, a central location that presents a perfect blend of tranquility and convenience.

The residence is a mere few minutes' walk away from the bustling Makariou Avenue, where you can find an array of shops, cafes, restaurants, and business offices, making it the heartbeat of urban life.

In addition to this urban vibrancy, Cloud9 is situated in a child-friendly neighborhood. A minute's walk will take you to Lanitio school, featuring not just educational facilities but also a playground, a stadium, and tennis and football courts, promoting a safe and active lifestyle for children.

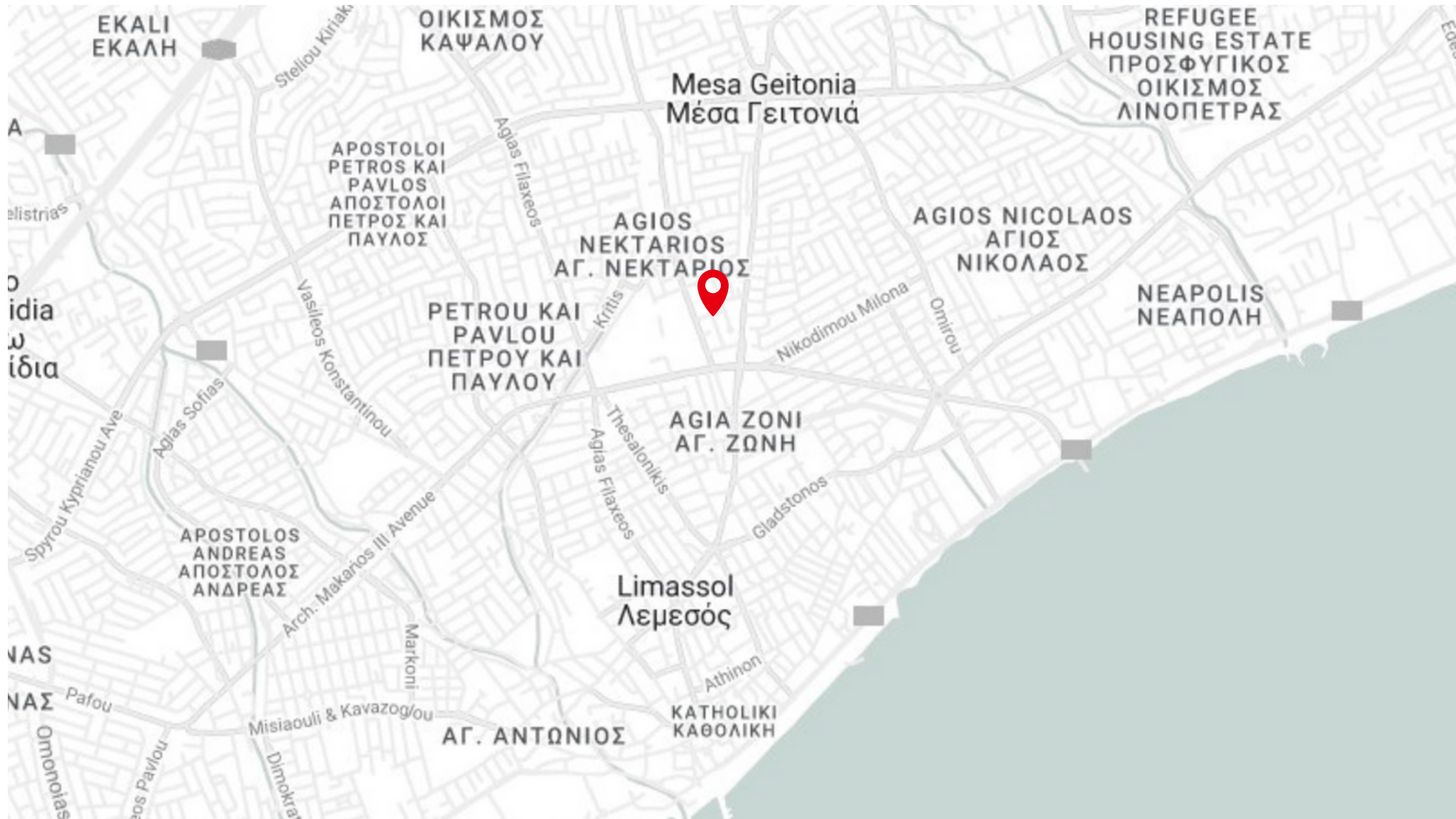




CL9UD

RESIDENCE





WALK

- Bank 5 min
- Bakery 2 min
- Schools 1 min
- Supermarket 5 min
- Makariou Avenue 1 min



DRIVE

- Limassol Marina 8 min
- Ygia Polyclinic 5 min
- Motorway 7 min
- Beach 5 min
- Historical center 7 min

THE NEIGHBORHOOD



LIFESTYLE

Cloud 9 provides an oasis-like retreat in the middle of the hustle and bustle of this vibrant city. Yet, a one minute stroll will bring you to the prominent Makariou Avenue where exclusive boutiques, cafés and attractive bistros are all there for the taking.

MARKETS & BAKERIES

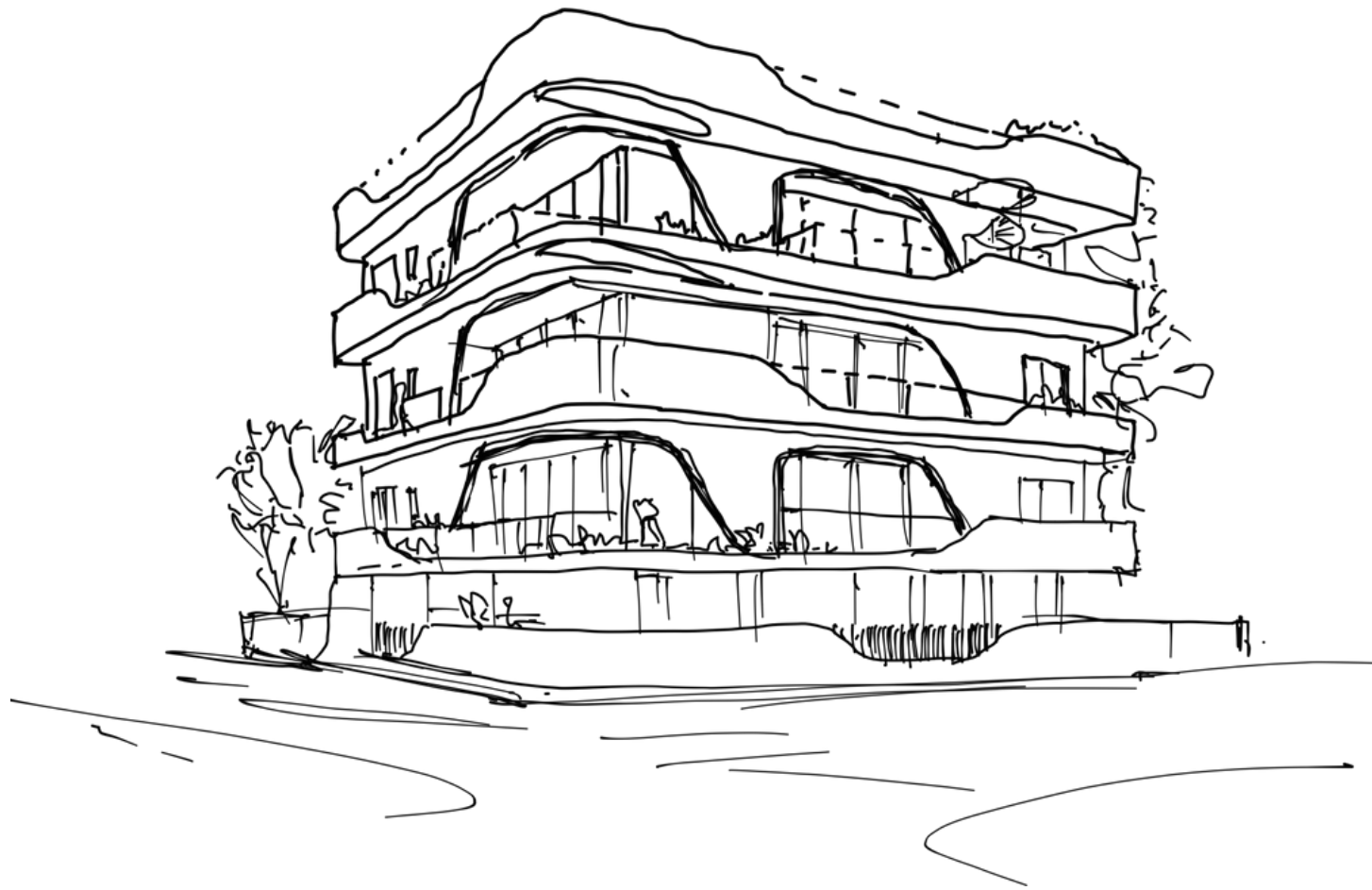
Just a few blocks away you'll find any primary amenities. Here you can stock up at COOP and Sklavenitis superstores before browsing the vast selection of local markets and bakeries providing everything from artisan bread to everyday essentials.



SCHOOLS & HOSPITALS

Two well respected public schools and many private kindergartens are within a short walk distance. Ygia Polyclinic is also a few minutes drive away from the residence - along with numerous pharmacies and private doctors.

CONTEMPORARY DESIGN



Cloud 9 exudes minimal sophistication and organic individuality. It was designed to embrace the view and create an open feel using a mixture of light and shading to mirror the natural world outside.

All apartments are designed and built to the highest standards with all the advantages of modern living. High ceilings, hidden LED lighting and ceiling mounted A/C units are some of the criteria used to experience an unparalleled luxury lifestyle.

Each apartment is also designed for day-to-day convenience. Bright, airy living spaces for people to live in, to laugh in and to write their own stories.

















MAIN FEATURES



Central VrV Air-Condition System



Photovoltaics & Net Metering for Each Apartment



Electric Vehicle Charge Provision for Each Apartment



Thermal Aluminum Lift & Slide - Floor-to-ceiling height doors



High Ceilings: +3m height



Face Recognition Entry Video Phone



Interior Design Consultation



Automated Gate for Parking Area



Wifi Controlled Water Heater

A hand holding a pen is positioned over a set of architectural floor plans. The plans are spread out on a surface, showing various rooms and corridors. The hand is in the upper right corner, and the pen is pointing towards the center of the plans. The background is slightly blurred, emphasizing the hand and the pen.

FLOOR PLANS

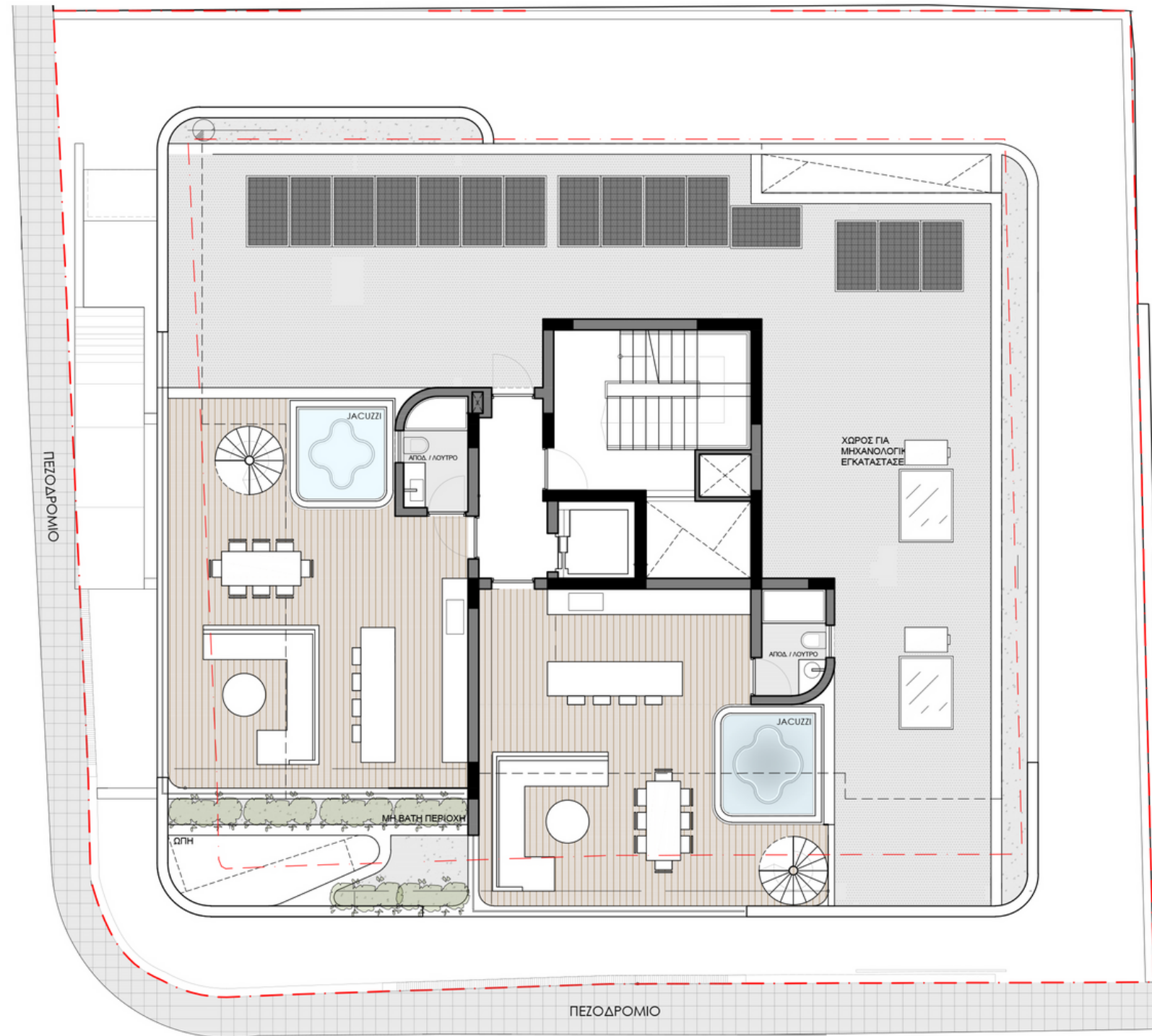
1ST & 2ND FLOOR PLAN



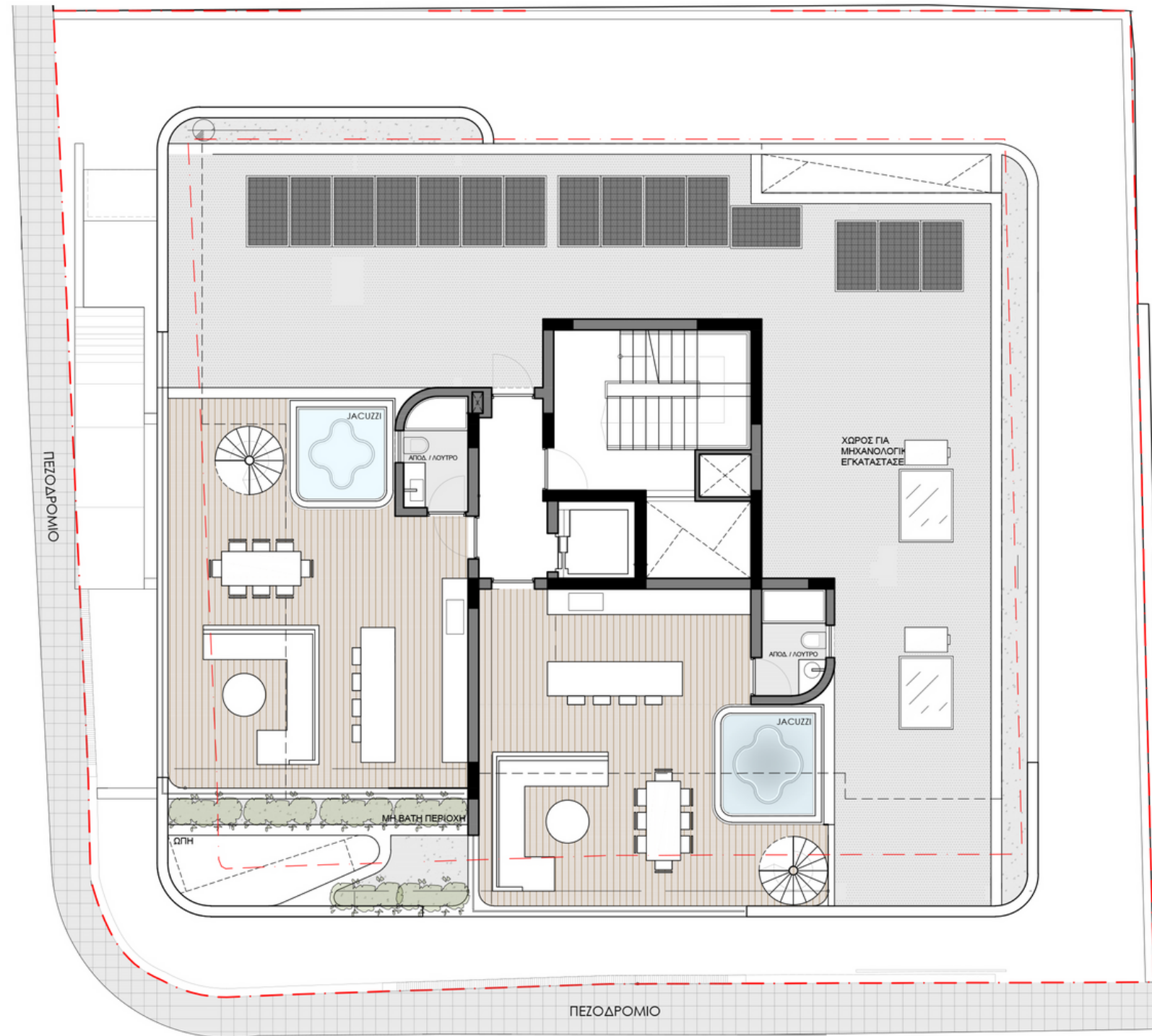
3RD FLOOR PLAN



ROOF GARDEN FLOOR PLAN



ROOF GARDEN FLOOR PLAN



DOMO PROPERTIES

Based in Limassol, we take great pride in distinctive projects across the city we love. With a strong focus on functional aesthetics, technology and sustainability we believe we make our customers lives better while protecting this island we call home.

OUR PHILOSOPHY

Spaces and places must have a positive impact on the people who use them and their surroundings. This is why we pursue to develop innovative, elegant and sustainable buildings that celebrate the use of natural light and the latest technologies. We strongly appreciate the importance of social, environmental and economic issues and work hard to address them with a caring approach to the way we design, develop and provision for our developments. The ultimate goal is to deliver life enhancing properties that are beautiful to look at and easy to live with.

For more information please visit us at:
www.domoproperties.com

DOMO
P R O P E R T I E S