

DOMO  
PROPERTIES

CLOUD  
RESIDENCE



CLOUD  
RESIDENCE



DOMO  
PROPERTIES



Cloud 9 is a new residential project of 8 apartments, located in the vibrant heart of Limassol, in Laniteio area.

This project is a testament to modern architecture, meticulously crafted with the highest quality materials, combining practical spaces with a visually appealing design.

The 3-floor building predominantly faces southwest, providing a steady view of green landscapes, and sunlight.



# CLOUD



# A COSMOPOLITAN EXPANSE

Cloud 9 is nestled in the Laniteio area of Limassol, a central location that presents a perfect blend of tranquility and convenience.

With schools, parks, cafes, and supermarkets only a stone's throw away, life at Cloud 9 ensures you have everything you need at your doorstep.

The location also offers easy access to all amenities, making your daily commute a breeze.



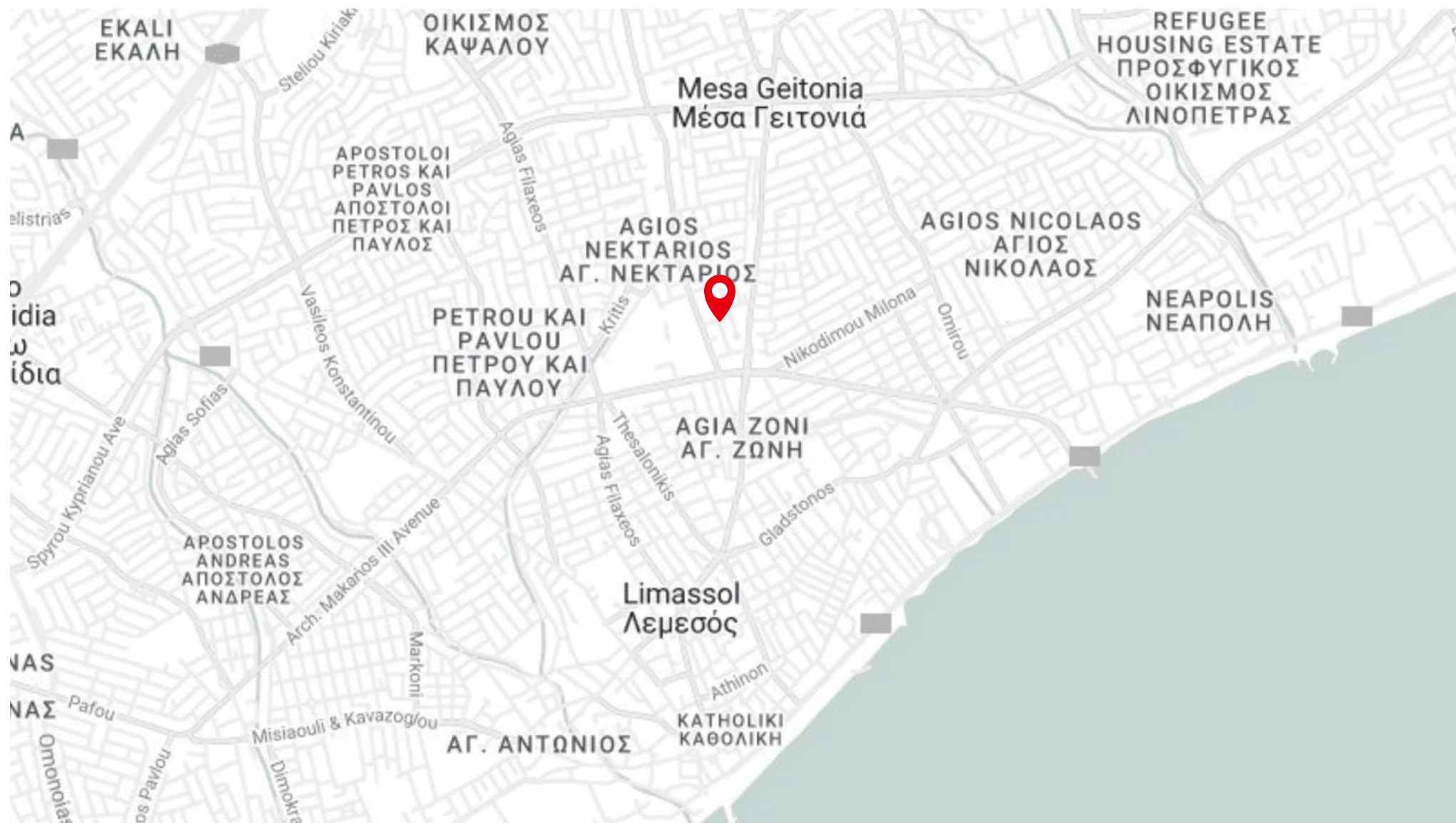


**CLOUD**  
RESIDENCE









## WALK

- Bank 10 min
- Bakery 15 min
- Schools 5 min
- Supermarket 6 min
- Makariou Avenue 2 min



## DRIVE

- Limassol Marina 11 min
- Ygia Polyclinic 6 min
- Motorway 8 min
- Limassol Municipal Garden 6 min
- Historical center 9 min



# THE NEIGHBORHOOD



## LIFESTYLE

Cloud 9 provides an oasis-like retreat in the middle of the hustle and bustle of this vibrant city. Yet, a two minute stroll will bring you to the prominent Makariou Avenue where exclusive boutiques, cafés and attractive bistros are all there for the taking.

## MARKETS & BAKERIES

Just a few blocks away you'll find any primary amenities. Here you can stock up at COOP and Sklavenitis superstores before browsing the vast selection of local markets and bakeries providing everything from artisan bread to everyday essentials.

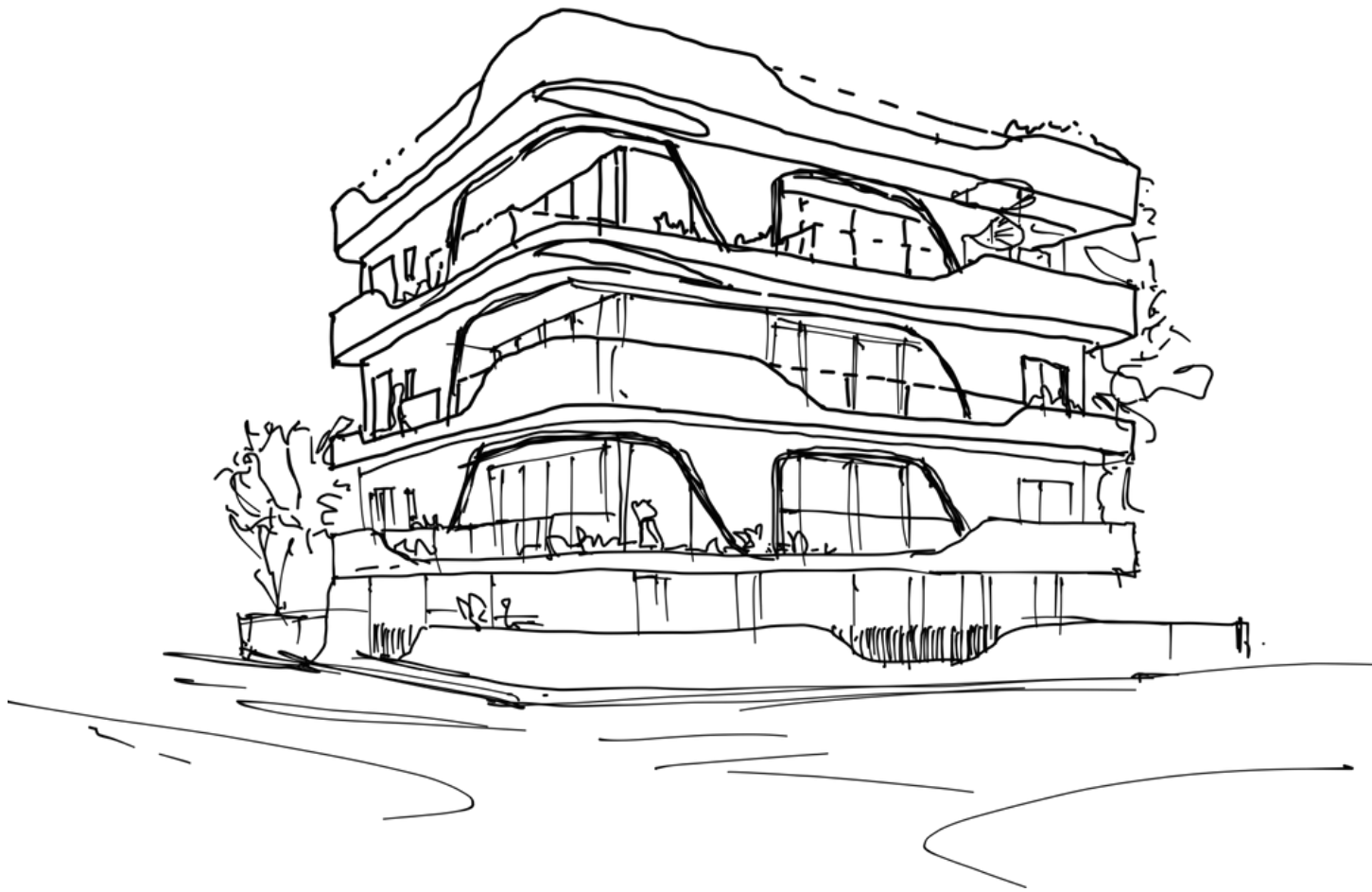


## SCHOOLS & HOSPITALS

Two well respected public schools and many private kindergartens are within a short walk distance. Ygia Polyclinic is also a few minutes drive away from the residence - along with numerous pharmacies and private doctors.



# CONTEMPORARY DESIGN



Cloud 9 exudes minimal sophistication and organic individuality. It was designed to embrace the view and create an open feel using a mixture of light and shading to mirror the natural world outside.

All apartments are designed and built to the highest standards with all the advantages of modern living. High ceilings, hidden LED lighting and ceiling mounted A/C units are some of the criteria used to experience an unparalleled luxury lifestyle.

Each apartment is also designed for day-to-day convenience. Bright, airy living spaces for people to live in, to laugh in and to write their own stories.





















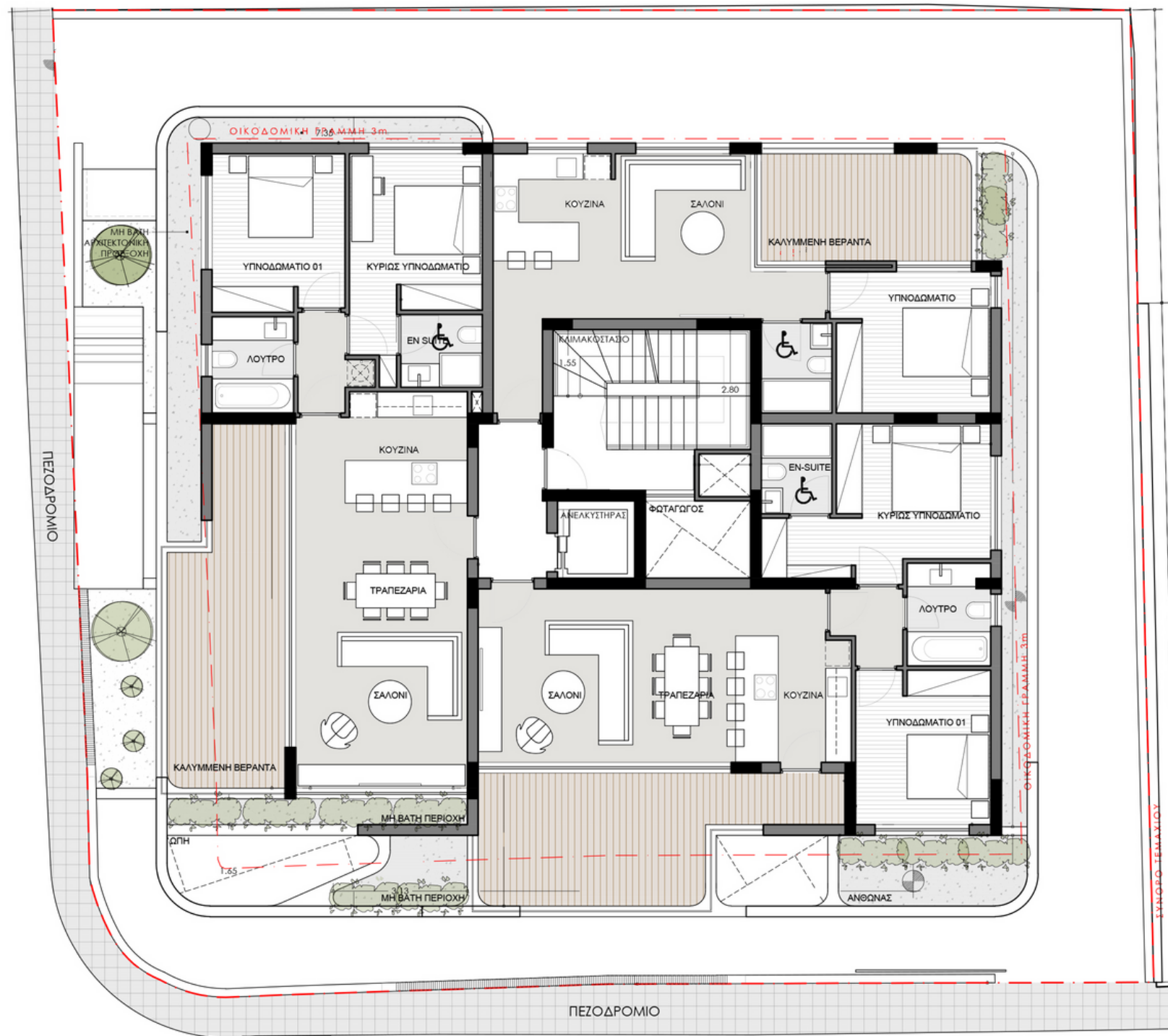




# FLOOR PLANS



# 1ST & 2ND FLOOR PLAN



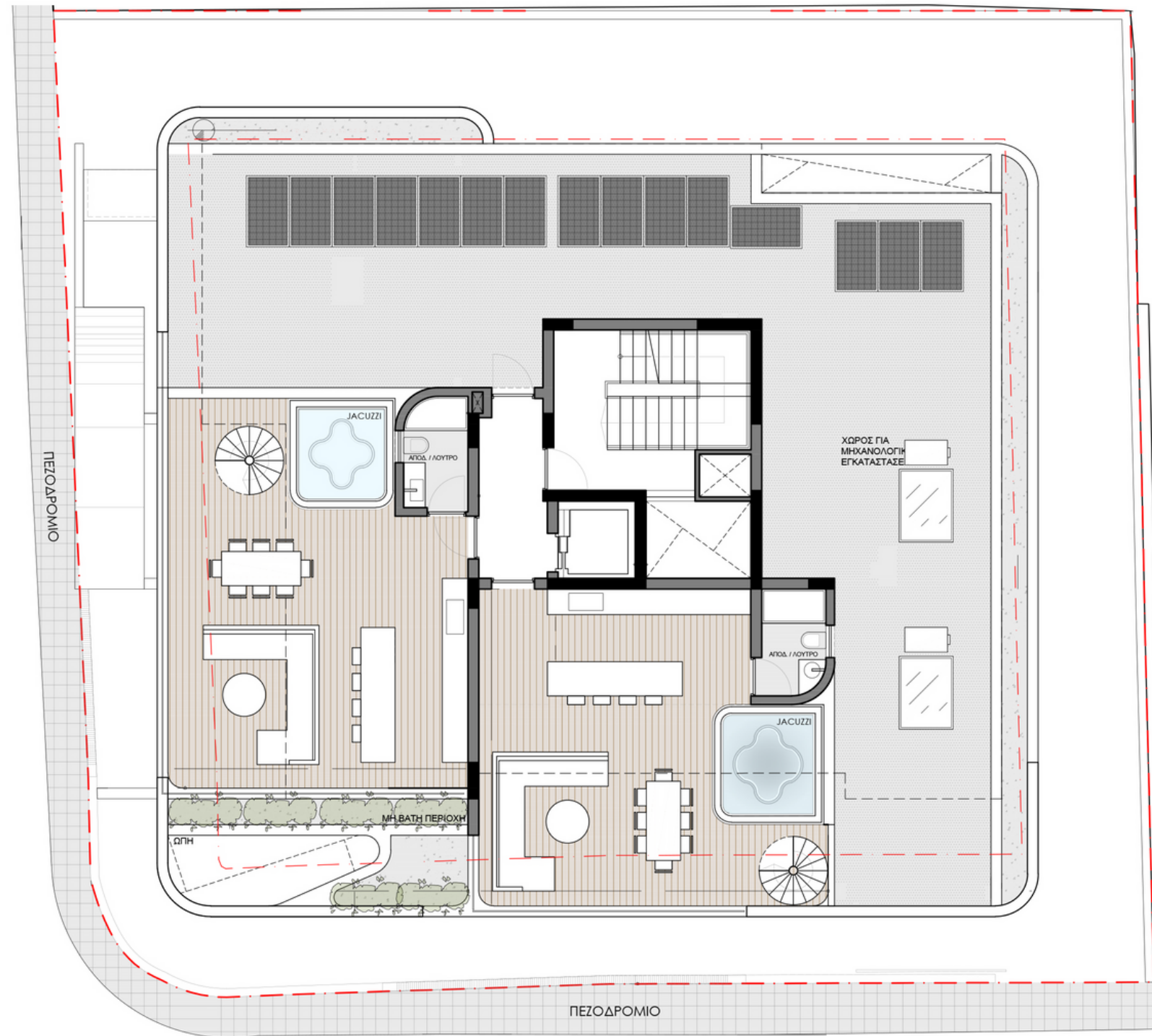


# 3RD FLOOR PLAN





# ROOF GARDEN FLOOR PLAN





## **DOMO PROPERTIES**

Based in Limassol, we take great pride in distinctive projects across the city we love. With a strong focus on functional aesthetics, technology and sustainability we believe we make our customers lives better while protecting this island we call home.

## **OUR PHILOSOPHY**

Spaces and places must have a positive impact on the people who use them and their surroundings. This is why we pursue to develop innovative, elegant and sustainable buildings that celebrate the use of natural light and the latest technologies. We strongly appreciate the importance of social, environmental and economic issues and work hard to address them with a caring approach to the way we design, develop and provision for our developments. The ultimate goal is to deliver life enhancing properties that are beautiful to look at and easy to live with.

For more information please visit us at:  
[www.domoproperties.com](http://www.domoproperties.com)

**DOMO**  
P R O P E R T I E S