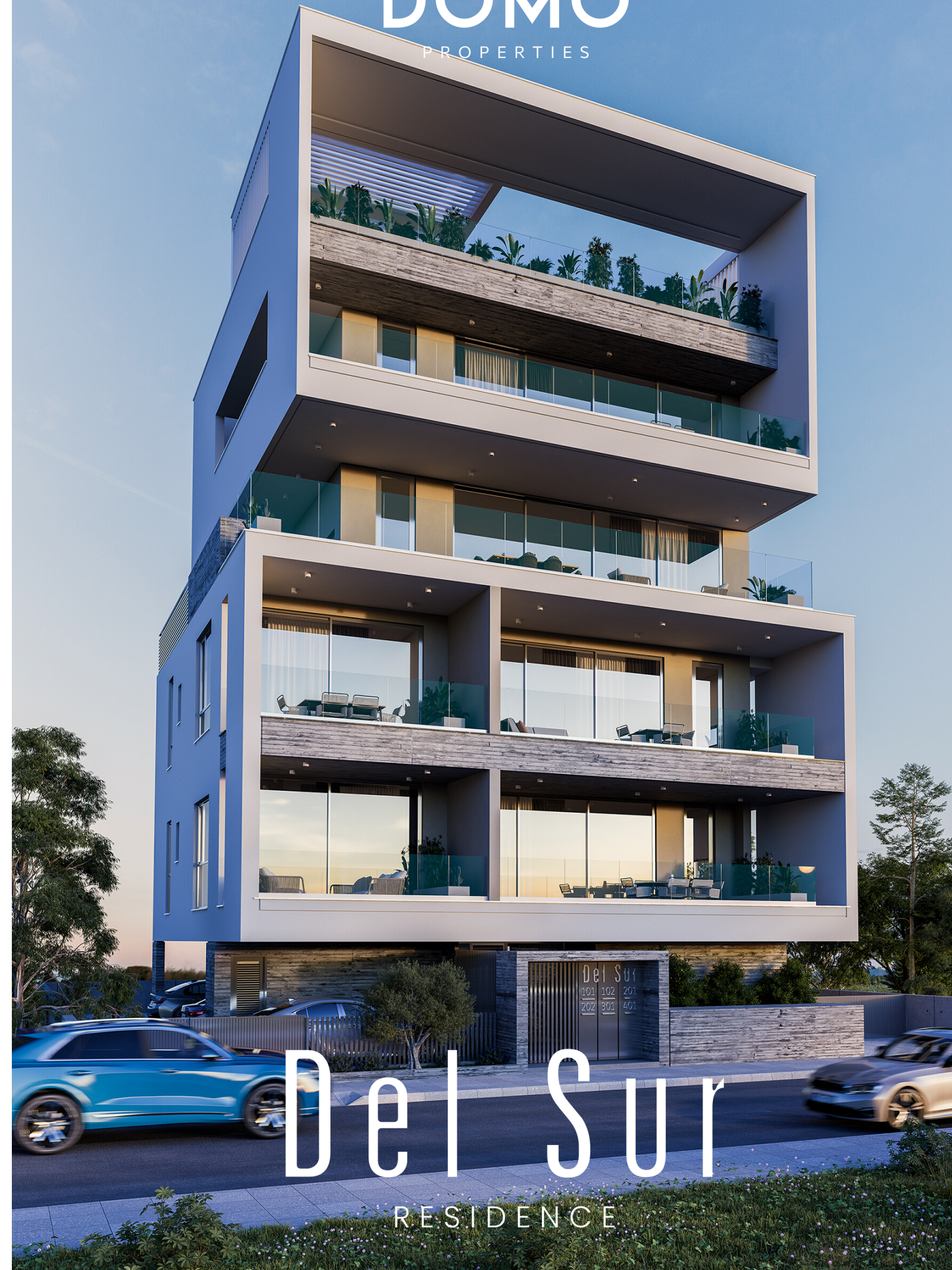


DOMO
PROPERTIES



Del Sur
RESIDENCE

Del Sur presents a selection of just 6 superb apartments situated on the top side of the prestigious Riga Fereou neighbourhood in Limassol centre.

Thoughtfully designed, Del Sur embodies the best of contemporary living harmonized with beautiful and practical spaces enlaced in quality materials.

“Del Sur” derives from a Spanish phrase meaning southward or southward looking.

It is unmistakably proposing of beautiful views, sunlight, liveliness and priceless moments.

The right side of the image features a decorative background consisting of numerous thin, wavy, horizontal lines in a light grey color. Overlaid on these lines are large, bold, black, stylized letters that appear to be part of the word 'Del Sur'. The letters are fragmented and partially cut off by the right edge of the frame. The visible parts include the top of a 'D', the middle of a 'S', a horizontal bar, and the bottom of an 'a' and an 'r'.

Del Sur

THE APPROACH

DESIGN IS IN THE DETAILS

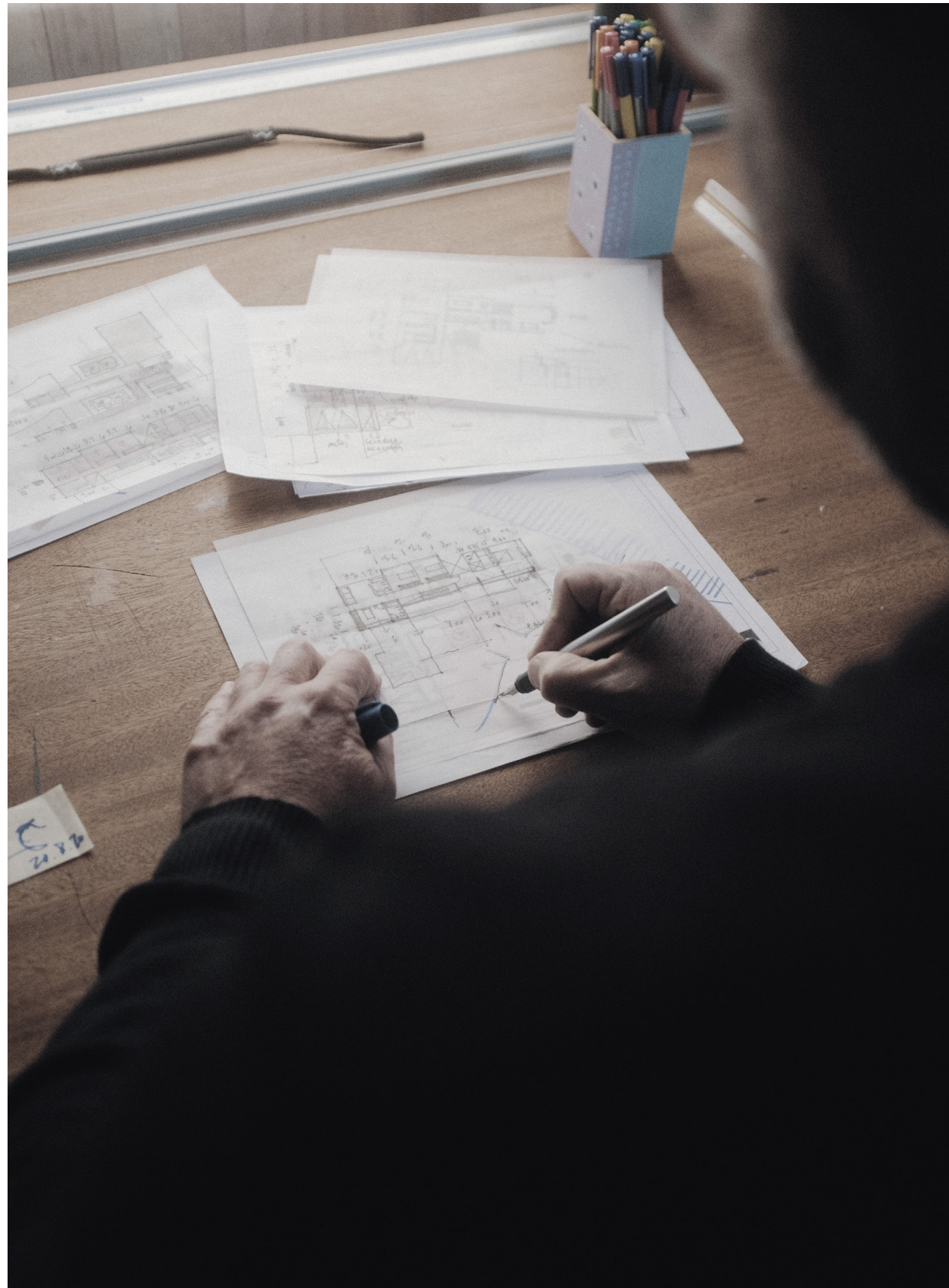
From concept to completion, Del Sur Residence has been thoughtfully designed so that every detail has been reflected. Driven by a 'people-orientated approach', our drive for uncompromising quality was key to ensuring that Del Sur is the place and space for priceless living.

EXCELLENCE IN EVERY DETAIL

Del Sur has challenged every single traditional design argument. Incremental improvements to the overall design and structure have been painstakingly applied and carried out to exceptional standards. The finished building brings genuine satisfaction to the team, as everything has come together to form the attractive masterpiece you see today.

SOUTHWARD PRIVACY

The structure has been thoughtfully designed to offer southward views for each apartment, whilst overlooking the street in appropriate privacy. The clean lines of the architecture and large sized windows mean bright rooms where natural sunlight can flood in unhindered.





Del Sur

RESIDENCE



DeI Sur



THE LOCATION

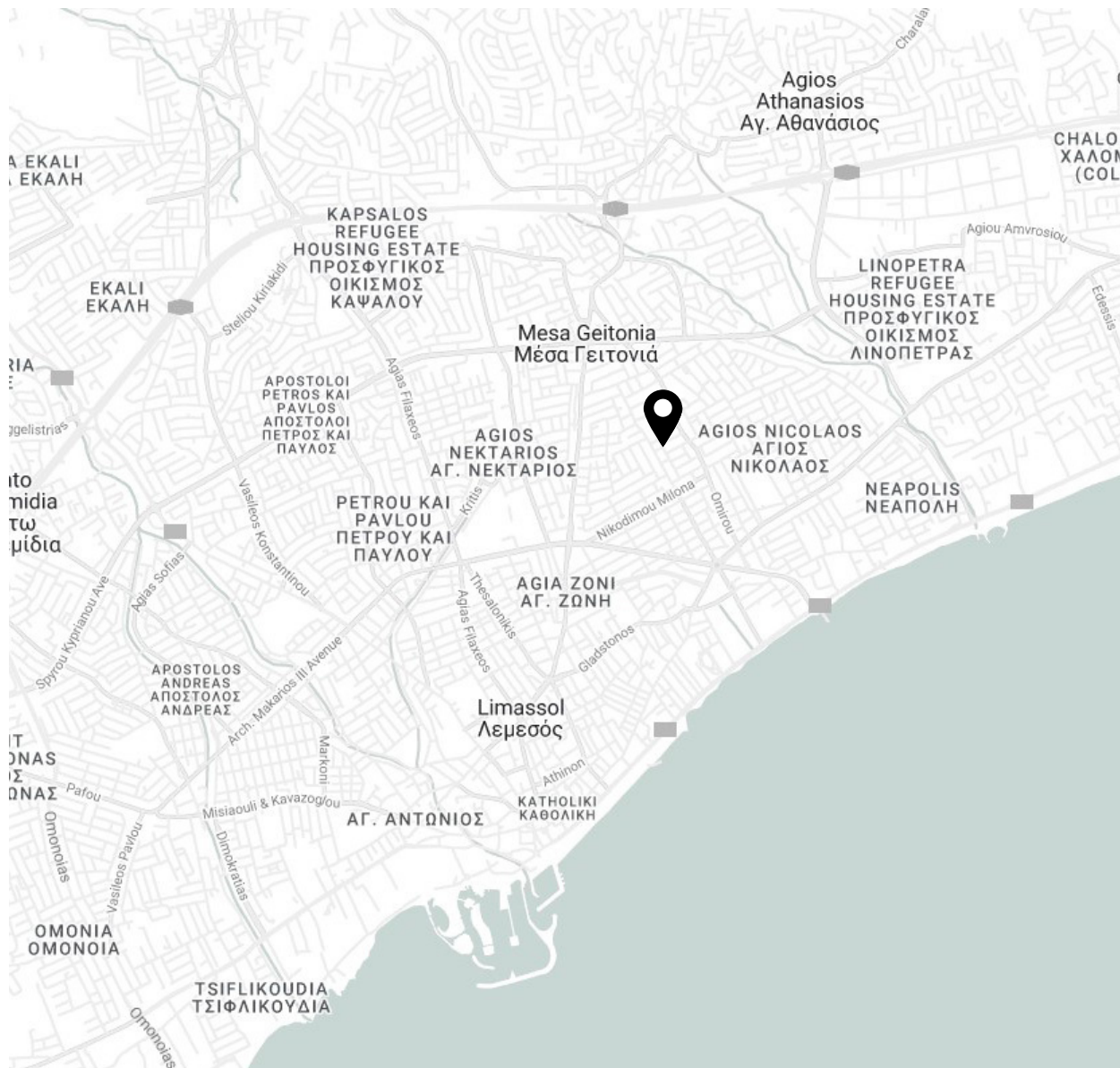
CLASSY RIGA FEREOU

Riga Fereou area is home to some of Limassol's most renowned personalities such as prominent artists, statesmen and business people.

This timeless neighbourhood is indulged with villas, modern elegant houses, green areas and safe spaces for careless walks and leisure.

The magic with this neighbourhood is that this classy and serene setting is found right in the heart of the city.

Limassol is literally at your feet with 5' minute walks from any services, the high street or the beachfront.



WALK

- Bakery 3 min
- Supermarket 5 min
- School 8 min
- Makariou Avenue 10 min
- Bank 9 min



DRIVE

- Spyrou Kyprianou 2 min
- Motorway Access 4 min
- Limassol Marina 8 min

THE NEIGHBORHOOD



A HOME IN THE CITY

Limassol is the new Business Hub of the Mediterranean and it's only just commencing to raise a global interest. Del Sur takes in all the serenity and prettiness of this exclusive neighbourhood while offering exceptional access to everything the city has to offer.

LIFESTYLE

Del Sur provides an oasis-like retreat in the middle of the hustle and bustle of this vibrant city. In contrast, a five minute stroll will bring you to the high-end Makariou Avenue where classy boutiques, stylish cafés and attractive bistros are all there for the taking.



EASY ACCESS EVERYWHERE

Within minutes you can be out of the city and on the motorway towards Paphos, Nicosia or anywhere else you wish to be. On your return, you'll enjoy easy access to Limassol's centre via major streets such as Spirou Kyprianou.

Del Sur

CONTEMPORARY DESIGN PHILOSOPHY



Del Sur exudes minimal sophistication and organic individuality. It was designed to embrace the view and create an open feel using a mixture of light and shading to mirror the natural world outside.

All apartments are designed and built to the highest standards with all the advantages of modern living. High ceilings, hidden LED lighting and ceiling mounted A/C units are some of the criteria used to experience an unparalleled luxury lifestyle.

Each apartment is also designed for day-to-day convenience. Bright, airy living spaces for people to live in, to laugh in and to write their own stories.









THE PENTHOUSE



Del Sur







FLOOR-THROUGH & PENTHOUSE RESIDENCES

The 3rd full floor residence offers an amazing full floor living courter while the 4th floor penthouse offers an exclusive experience with its rooftop spaces. Both incorporate many additional luxuries and of course heart stirring views of the city and the Mediterranean.

Both full floor residences incorporate uncompromising living spaces and terraces, where family, friends and lovers can enjoy dining, music and life with uncompromised views of the city. Perfect for peace and relaxation no matter what the season or the reason.



MAIN FEATURES



Energy - Class A+

Building complies with the local regulations of Energy Performance and has received a certificate of energy class 'A+'.



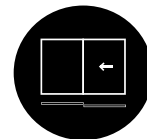
Air Condition - VRF

Mitsubishi - VRF SYSTETM



Heating – Under Floor

Full installation of premium quality (EU) electrical under-floor heating.



Floor to Ceiling Doors

Lift&Slide Floor to ceiling - thermal insulated aluminum doors.



Wide-ranging Technology Infrastructure

Each residence is fully prepared with state of the art (Cat 5) structured cabling that is ready to accommodate sophisticated home automation systems and security.



Fire Alarm Reassurance

All kitchen and food preparation areas are protected by state of the art fire alarm ceiling systems ready to activate at the threat of a fire incident.



GREEN PRACTICES



Green Architecture Design

Del Sur is designed with efficiency and effective use of energy and space in mind. This includes passive and active techniques to reduce the energy requirements of the structure.



Environmentally Friendly Materials

Del Sur has a certificate of energy efficiency of grade 'A'. The stringent design and European specifications have been met or exceeded to attain this standard.



Photovoltaics & Net Metering

The development will include the installation of a photovoltaics system on the roof- top. An option on the basis of first come/first served to achieve low consumption homes.



Electric Vehicle Charging Stations

The building offers a complete provision for the installation of an electric charge station for Electric or Hybrid Vehicles. This option can be offered on each parking station as well.

DeI Sur

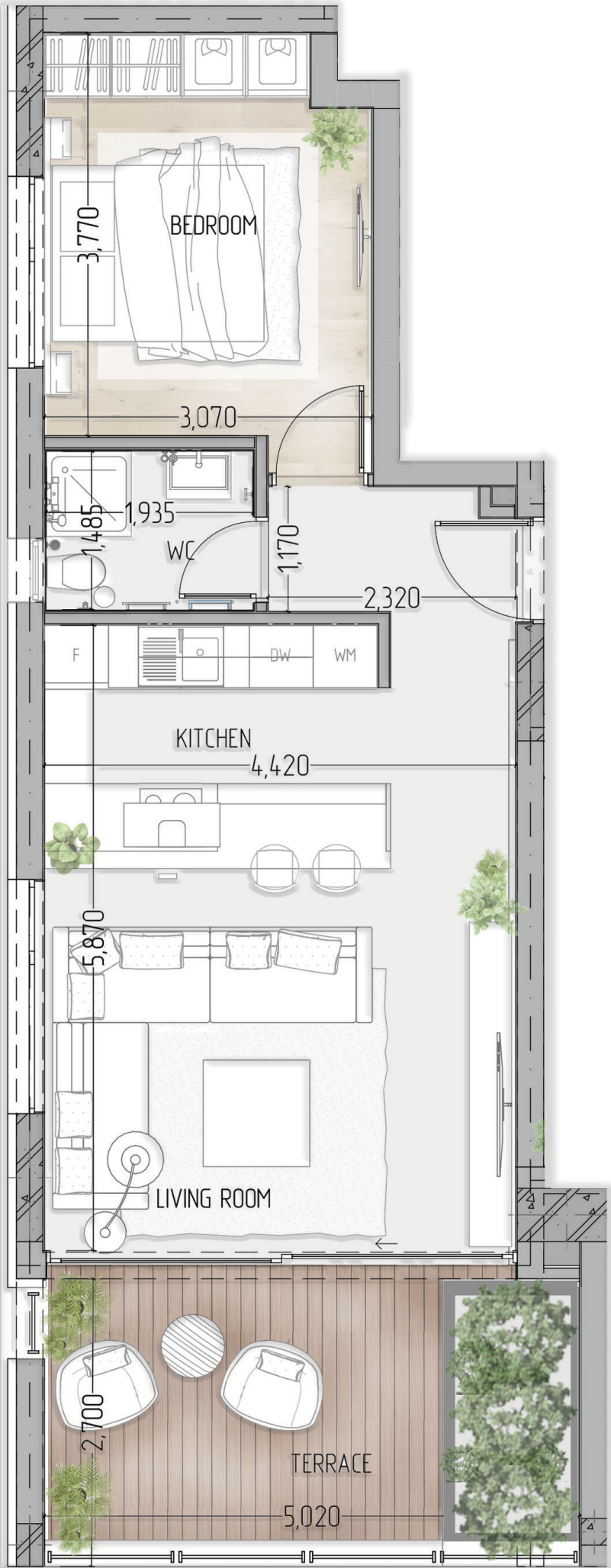


FLOOR PLANS

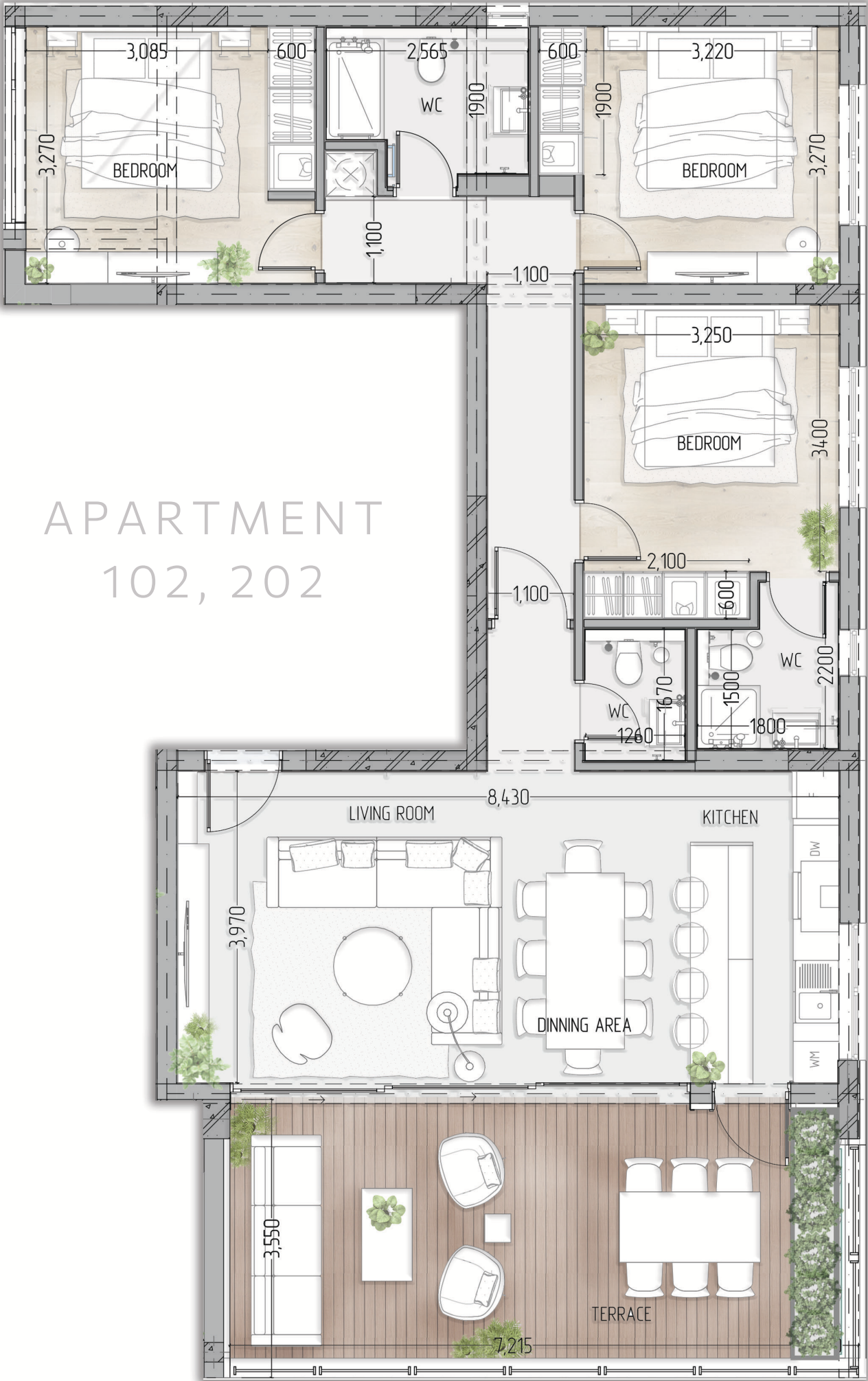
This architectural floor plan illustrates a multi-unit residential building, possibly a duplex or triplex. The layout is symmetrical around a central core containing a staircase and a lift. The plan includes the following details:

- Central Core:** Features a staircase and a lift (marked with a wheelchair symbol). Dimensions for the central hallways and common areas are 1,100 and 1,100.
- Units (Left Side):**
 - Top Unit:** Includes a bedroom (3,085), a bathroom (WC, 1,900), and a living area (3,270).
 - Middle Unit:** Includes a bedroom (3,770), a bathroom (WC, 1,485), a kitchen (4,420), and a living room (5,870).
 - Bottom Unit:** Includes a terrace (5,020) and a living room (3,970).
- Units (Right Side):**
 - Top Unit:** Includes a bedroom (3,220), a bathroom (WC, 1,900), and a living area (3,270).
 - Middle Unit:** Includes a bedroom (3,250), a bathroom (WC, 2,100), a kitchen (4,420), and a living room (5,870).
 - Bottom Unit:** Includes a terrace (5,020) and a living room (3,970).
- Dimensions:** Various room dimensions are provided, such as 3,085 for a bedroom, 4,420 for a kitchen, and 5,870 for a living room. The overall footprint of the building is 3,550 by 7,215.
- Other Features:** The plan shows a central staircase, a lift, and several terraces (5,020) for outdoor living. The building is surrounded by landscaping, including trees and shrubs.

APARTMENT
101, 201

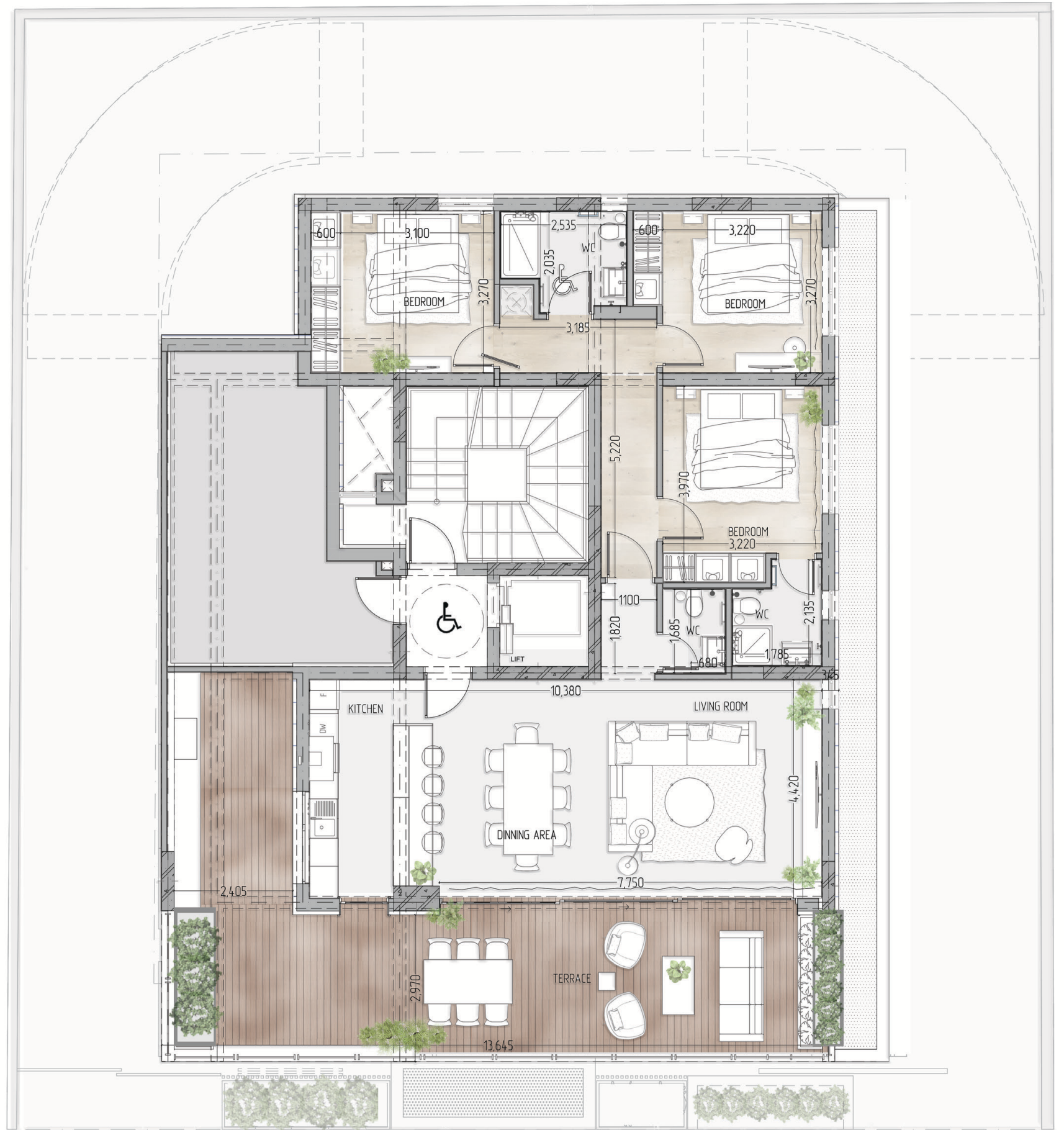


APARTMENT
102, 202



GENERAL PLAN

FLOOR 3



GENERAL PLAN
FLOOR 4



DOMO PROPERTIES

Based in Limassol, we take great pride in distinctive projects across the city we love. With a strong focus on functional aesthetics, technology and sustainability we believe we make our customers lives better while protecting this island we call home.

OUR PHILOSOPHY

Spaces and places must have a positive impact on the people who use them and their surroundings. This is why we pursue to develop innovative, elegant and sustainable buildings that celebrate the use of natural light and the latest technologies. We strongly appreciate the importance of social, environmental and economic issues and work hard to address them with a caring approach to the way we design, develop and provision for our developments. The ultimate goal is to deliver life enhancing properties that are beautiful to look at and easy to live with.

For more information please visit us at:
www.domoproperties.com

DOMO
P R O P E R T I E S