

DOMO
PROPERTIES

Fjord
RESIDENCE

Fjord Residence presents a selection of 7 superb units situated in one of the most sought after neighborhoods in the heart of Limassol.

The project embodies the best of contemporary esthetics inspired by Scandinavian design that is consistent with functionality and quality materials.

The residence is cleverly oriented on a southward corner plot on Kimonos street offering rich daylight ambience and pleasant views of the city.



THE APPROACH

DESIGN IS IN THE DETAILS

From concept to completion, Fjord Residence has been thoughtfully designed so that every detail has been reflected. Driven by a 'people-orientated approach', our drive for uncompromising quality was key to ensuring that Fjord is the place and space for priceless living.

EXCELLENCE IN EVERY DETAIL

Fjord has challenged every single traditional design argument. Incremental improvements to the overall design and structure have been painstakingly applied and carried out to exceptional standards. The finished building brings genuine satisfaction to the team, as everything has come together to form the attractive masterpiece you see today.

SOUTHWARD PRIVACY

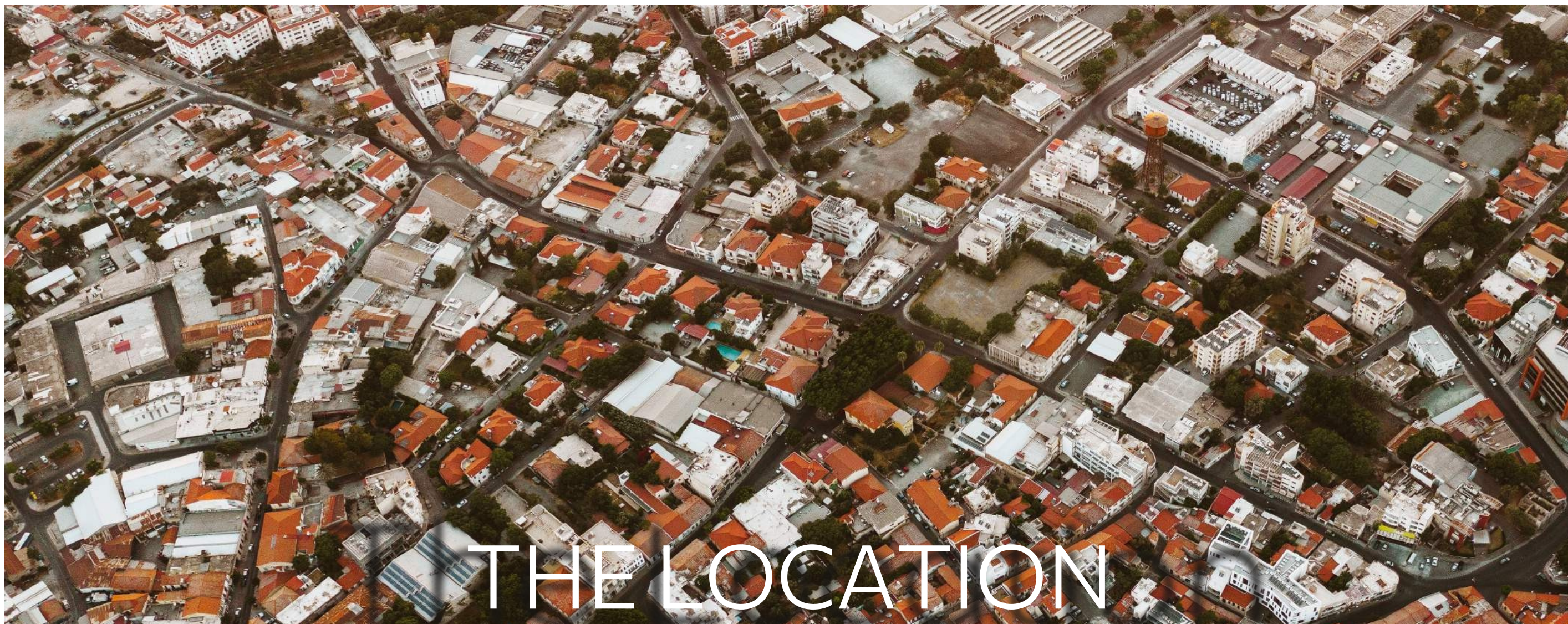
The structure has been thoughtfully designed to offer southward views for each apartment, whilst overlooking the street in appropriate privacy. The clean lines of the architecture and large sized windows mean bright rooms where natural sunlight can flood in unhindered.



Fjord



Fjord
RESIDENCE



THE LOCATION

A NORDIC EXPRESSION

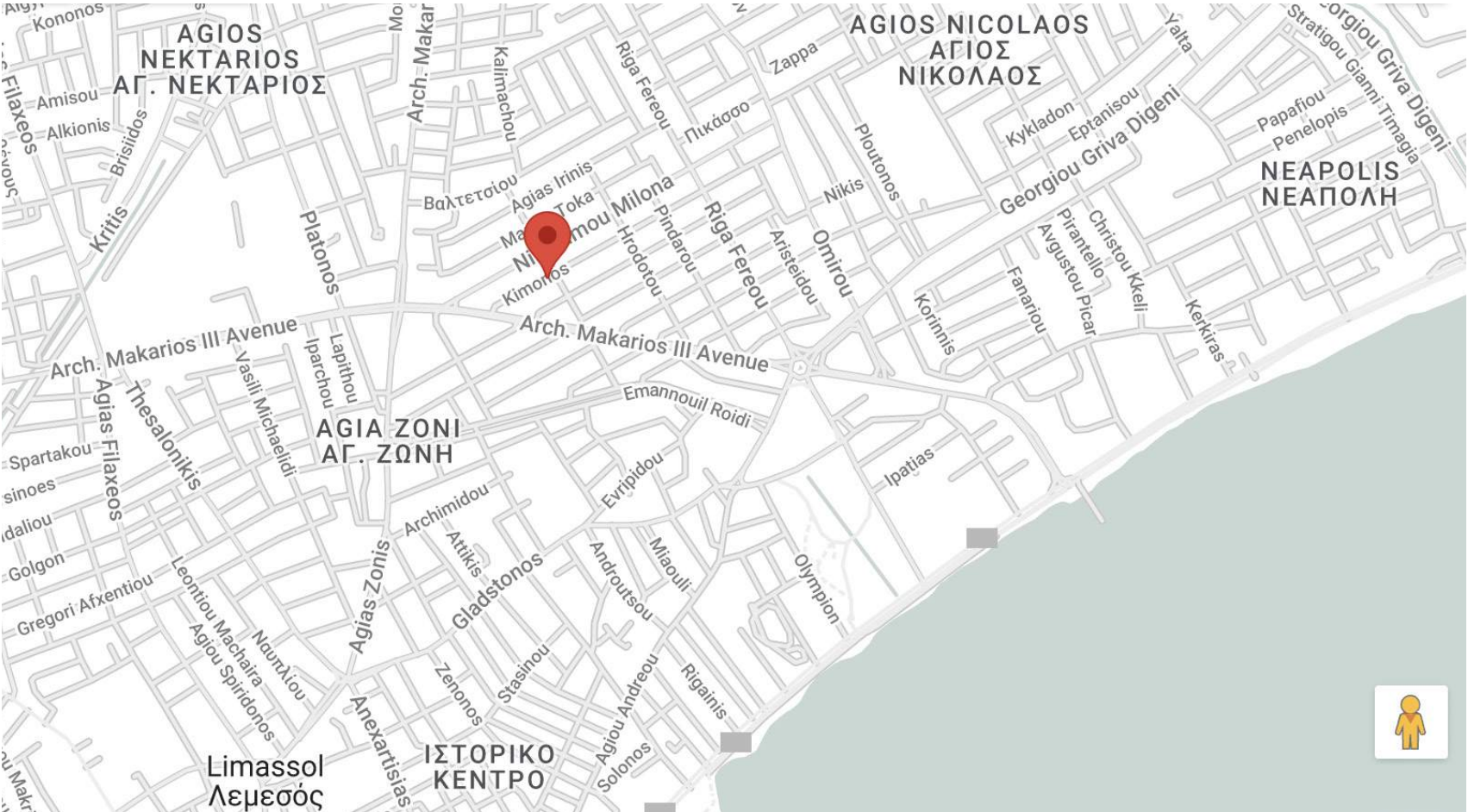
Riga Fereou is undoubtedly one of Limassol's most prestigious districts with many prominent residents choosing this exact part to call home.

The metropolis is literally at your feet with minute walks away from schools, primary services, the high street and the coast.

The timeless neighborhood is treated with both modern and historical residences as well as scenic streets and parks for walks and leisure.

The unique charm of this region is that its serene setting is so close to both the beachfront and the city center.

Fjord



WALK

- Bank 6 min
- Bakery 5 min
- Schools 10 min
- Supermarkets 7 min
- Makariou Avenue 10 min



DRIVE

- Beach 2 min
- Marina 6 min
- Motorway 11 min
- Ygia Polyclinic 6 min
- Ag. Nikolaos Roundabout 1 min

THE NEIGHBORHOOD

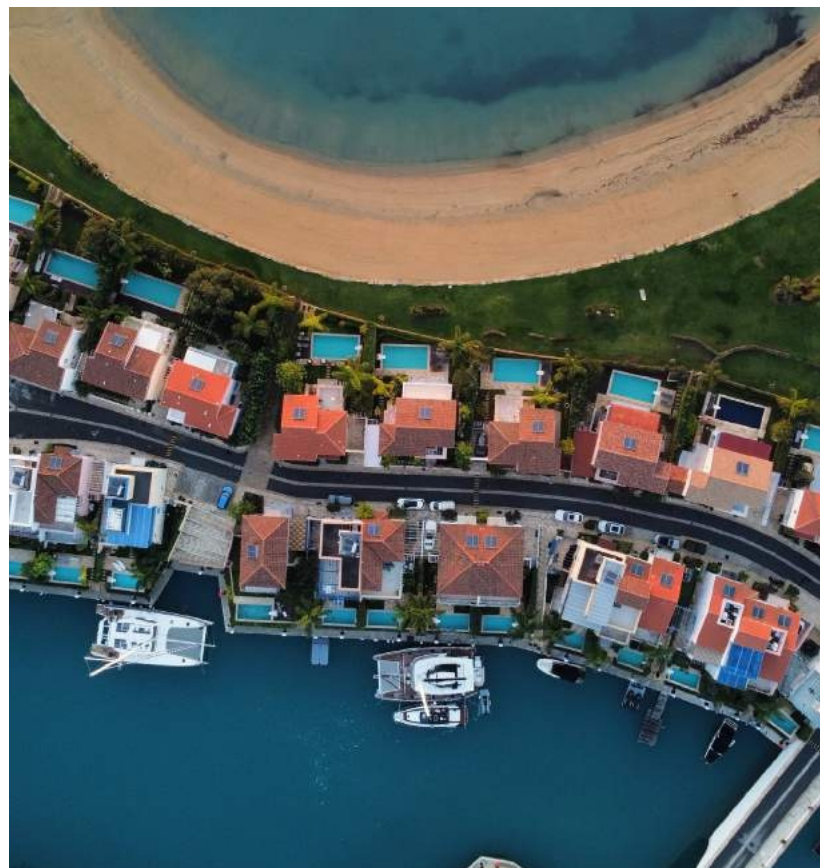


LIFESTYLE

Fjord provides an oasis-like retreat in the middle of the hustle and bustle of the city. Yet, a five minute stroll will bring you to the Makariou Avenue where exclusive boutiques, cafés and attractive bistros are all there for the taking.

MARKETS & BAKERIES

Just a few blocks away you'll find any primary conveniences required. You can buy groceries at a nearby supermarket or browse the local fruit markets or bakeries of the area that can provide fresh artisan bread, vegies or fruits.



SCHOOLS & HOSPITALS

A well respected public primary school and other private schools are within a short drive. Ygia Medical Center is just a few minutes' drive from Kimonos street - along with numerous pharmacies and health stores.



Fjord

CONTEMPORARY DESIGN



Fjord exudes minimal sophistication and organic individuality. It was designed to embrace the view and create an open feel using a mixture of light and shading to mirror the natural world outside.

All apartments are designed and built to the highest standards with all the advantages of modern living. High ceilings, hidden LED lighting and ceiling mounted A/C units are some of the criteria used to experience an unparalleled luxury lifestyle.

Each apartment is also designed for day-to-day convenience. Bright, airy living spaces for people to live in, to laugh in and to write their own stories.

Fjord



Fjord



Fjord



Fjord



Fjord

MAIN FEATURES



Energy - Class A+

Building complies with the local regulations of Energy Performance and has received a certificate of energy class 'A+'.



Air Condition - VRF

Mitsubishi - VRF SYSTEM



Floor to Ceiling Doors

Lift&Slide Floor to ceiling - thermal insulated aluminum doors.



Wide-ranging Technology Infrastructure

Each residence is fully prepared with state of the art (Cat 5) structured cabling that is ready to accommodate sophisticated home automation systems and security.



Fire Alarm Reassurance

All kitchen and food preparation areas are protected by state of the art fire alarm ceiling systems ready to activate at the threat of a fire incident.

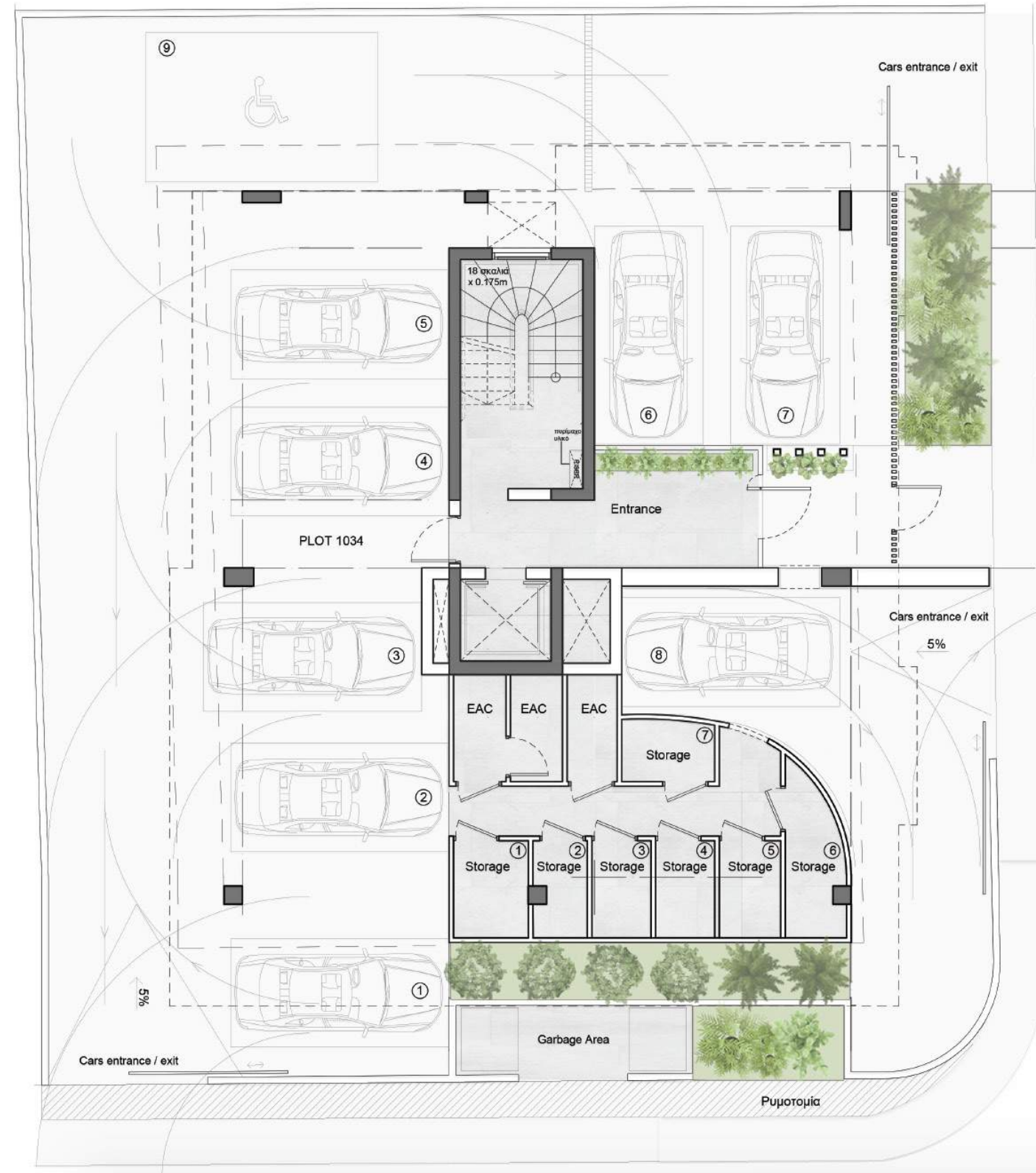


Fjord

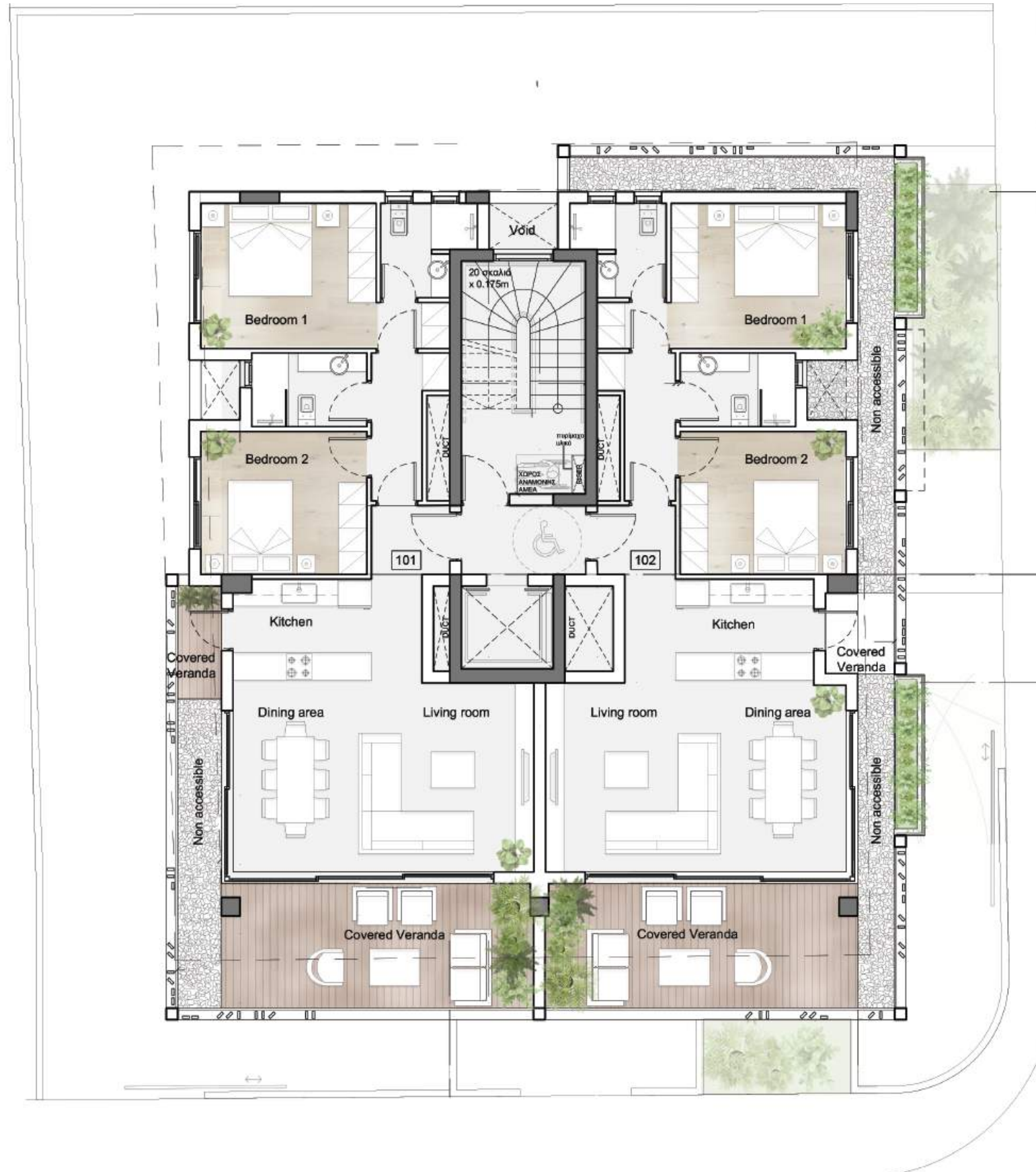
A person is seated at a desk, working on a computer. The computer monitor displays a 3D architectural model of a building's structural framework, showing a grid of columns and beams. The person's hands are visible, with one hand on a mouse. The background is blurred, showing a white wall and some office equipment. The text "FLOOR PLANS" is overlaid in large, white, sans-serif capital letters at the bottom of the image.

FLOOR PLANS

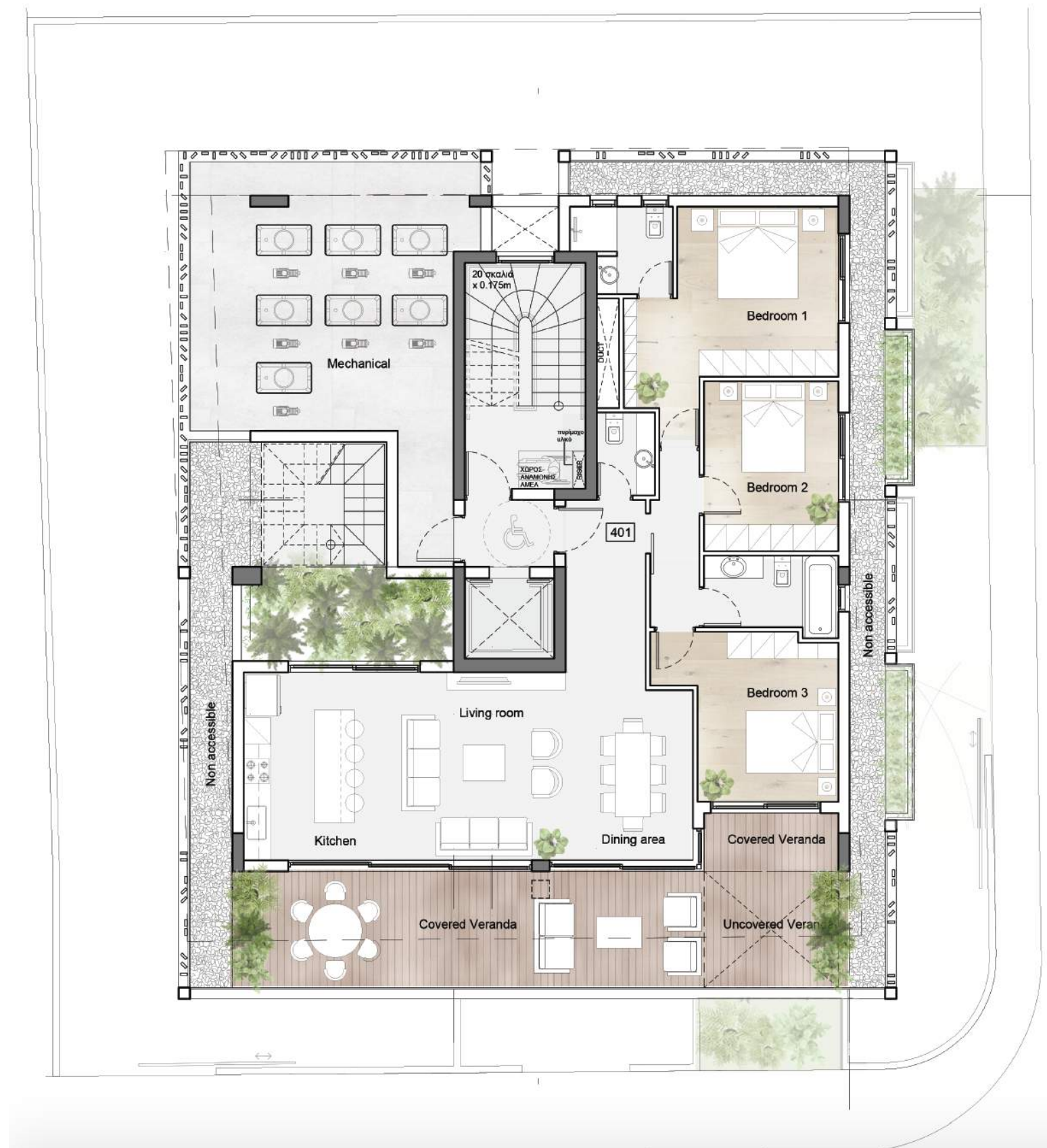
GROUND FLOOR



FIRST AND SECOND FLOOR



FOURTH FLOOR



ROOF GARDEN



DOMO PROPERTIES

Based in Limassol, we take great pride in distinctive projects across the city we love. With a strong focus on functional aesthetics, technology and sustainability we believe we make our customers lives better while protecting this island we call home.

OUR PHILOSOPHY

Spaces and places must have a positive impact on the people who use them and their surroundings. This is why we pursue to develop innovative, elegant and sustainable buildings that celebrate the use of natural light and the latest technologies. We strongly appreciate the importance of social, environmental and economic issues and work hard to address them with a caring approach to the way we design, develop and provision for our developments. The ultimate goal is to deliver life enhancing properties that are beautiful to look at and easy to live with.

For more information please visit us at:
www.domoproperties.com

DOMO
P R O P E R T I E S