



ARLES RESIDENCE

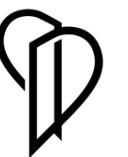
Delivery Date: Q2 2027



DOMO
PROPERTIES

Inspired by the timeless beauty of Arles and the elegance of the South of France, Arles Residence embodies refined architecture with lush, suspended gardens that evoke the charm of Provençal terraces.

This exclusive four-story project comprises of only 10 meticulously crafted apartments, each designed with exceptional attention to detail, high-quality materials, and a seamless blend of luxury and comfort. The urban sanctuary seamlessly blends modern sophistication with the romance of Mediterranean living.



A COSMOPOLITAN EXPANSE

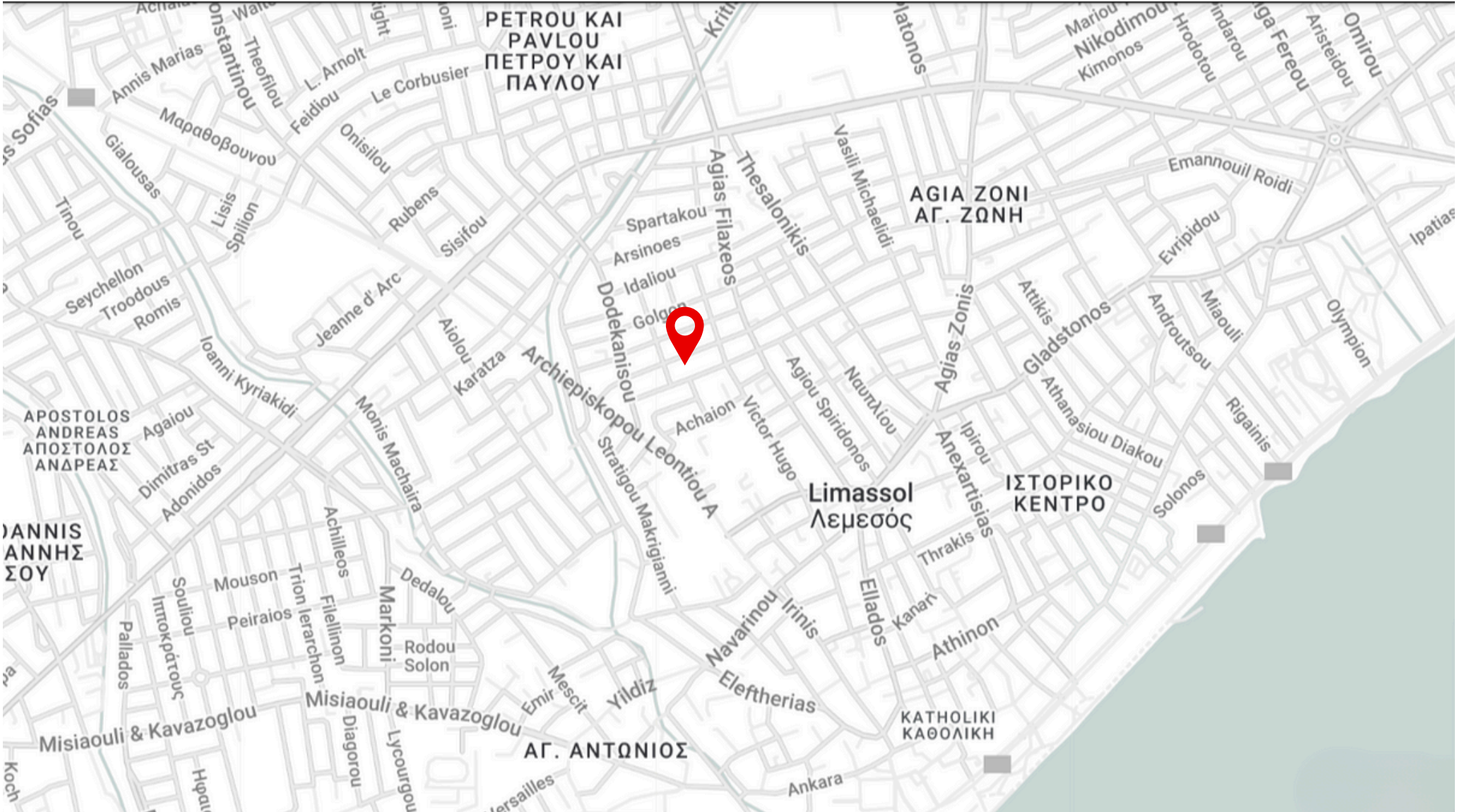
Arles Residence is situated in the vibrant Katholiki area of Limassol, a central neighbourhood that perfectly balances convenience and tranquility.

Just a 10-minute walk from the vibrant city center, you'll find charming cafés, boutique shops, and cultural hotspots—all within easy reach, while still enjoying the peacefulness of a private urban retreat.




THE LOCATION





	WALK	
- Schools		5 min
- Supermarket		2 min
- Clinic		4 min
- Bakery		2 min
- Makariou Avenue		5 min



DRIVE

- Beach 5 min
- Groceries 1 min
- Motorway 6 min
- Limassol Marina 4 min
- St Raphael Marina 17 min



THE NEIGHBORHOOD

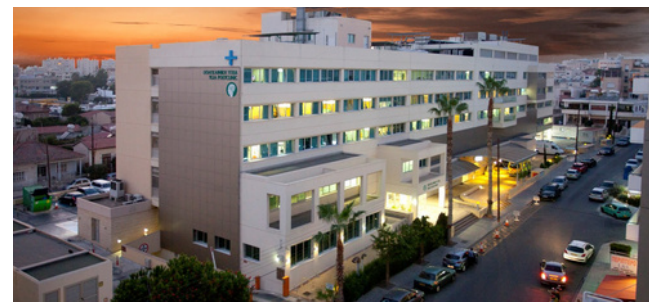


SCHOOLS

Families will find the location particularly advantageous, with the nearby Lanitio school offering not just education but also recreational facilities such as a playground, sports courts, and a stadium. Various private schools and kindergartens exist in the area as well.

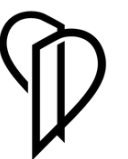
MARKETS & BAKERIES

Within walking distance, you'll find local markets, grocery stores, bakeries, and specialty shops that cater to all your everyday needs. Whether you're picking up fresh produce, gourmet items, or daily essentials, everything is just around the corner.



HOSPITALS

Arles Residence is ideally situated near Ygia Polyclinic, one of Limassol's most renowned private clinics, while the area is also home to numerous private doctors' offices and medical services, offering peace of mind when it comes to health.



CONTEMPORARY DESIGN



Arles Residence offers a collection of meticulously designed 1- and 2-bedroom apartments, spread across four floors. With only a few residences per floor, each apartment ensures privacy and exclusivity, making it the perfect choice for individuals and small families.

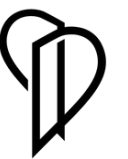
These residences feature spacious layouts with open-plan living areas, modern kitchens, and large terraces that create a seamless connection between indoor and outdoor spaces.

Each aspect of the design, from the thoughtfully planned interiors to the elegant facade, contributes to a residential experience that redefines modern living in Limassol.





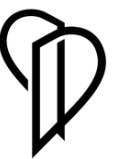
THE INTERIORS













MAIN FEATURES



Central VrV Air-Condition System



Photovoltaics & Net Metering for Each Apartment



Thermal Aluminum Lift & Slide - Floor-to-ceiling height doors



High Ceilings: +3m height



Face Recognition Entry Video Phone



Interior Design Consultation



Automated Gate for Parking Area



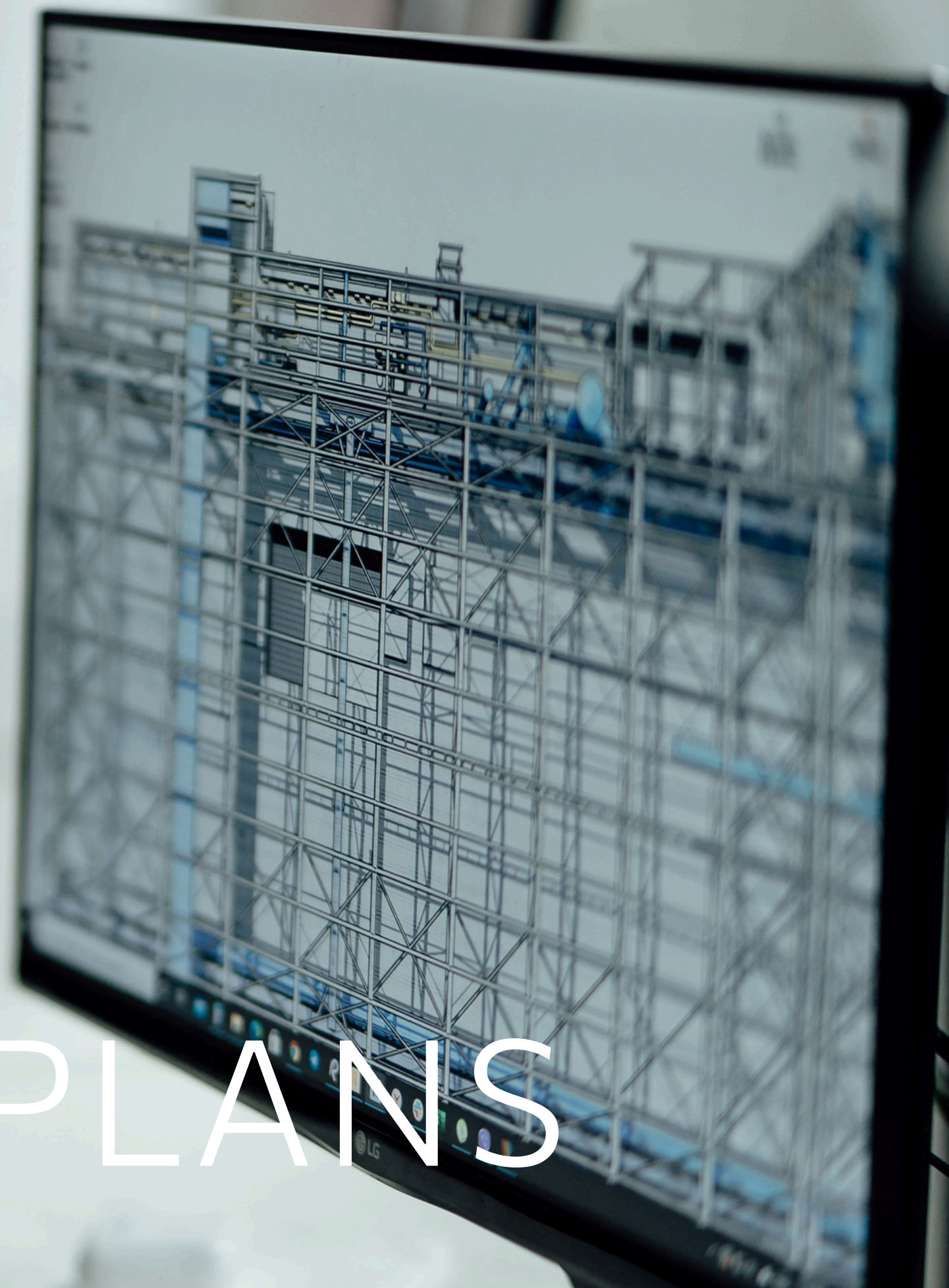
Wifi Controlled Water Heater



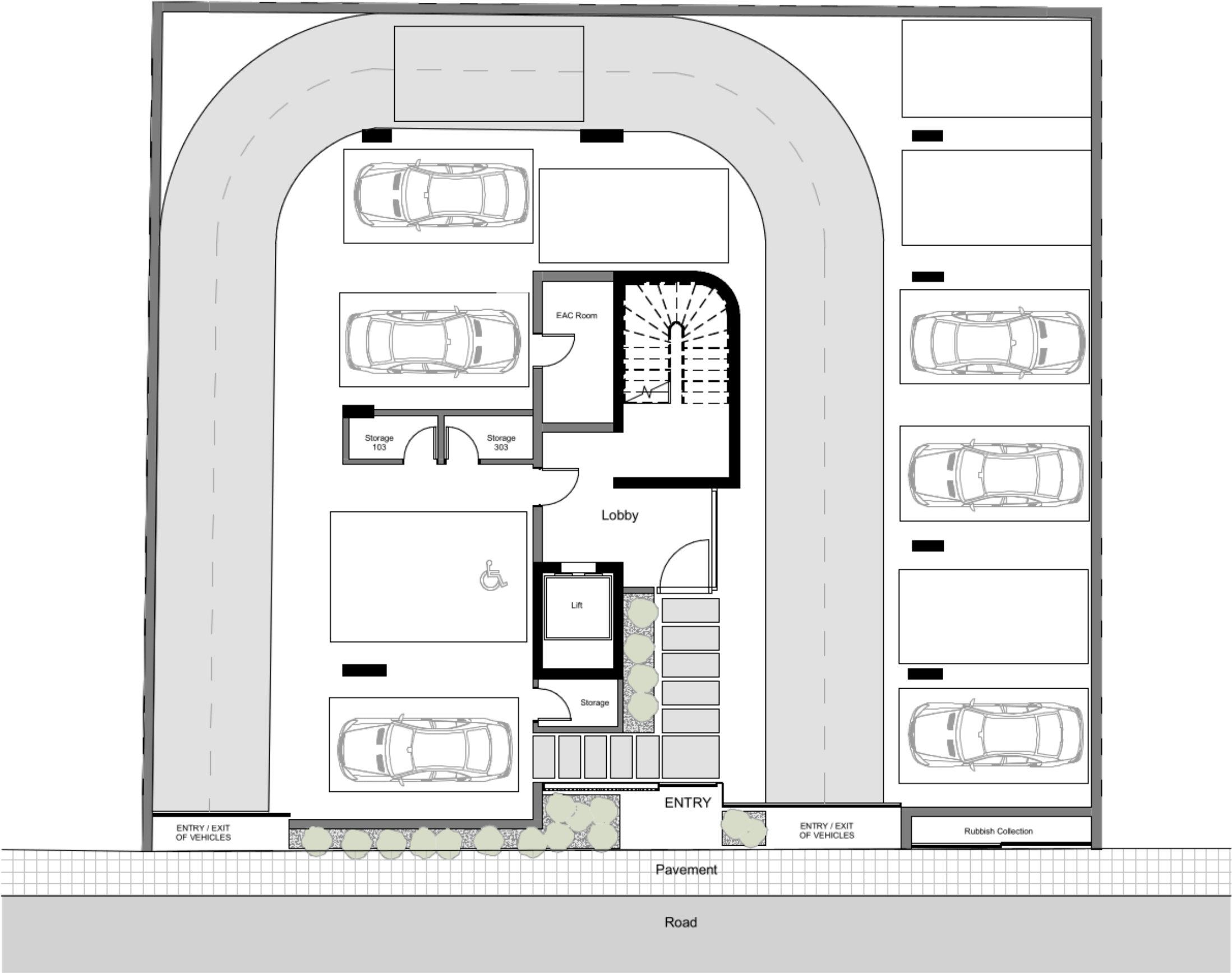
Electric Vehicle Charge Provision for Each Apartment

Ap.	Floor	Bedrooms	Indoor Area	Cov. Veranda	Uncov. Veranda	Roof Garden	Common Area	Total Area	Green Terrace	Parking	Storage
101	1	2	65 m²	18m²	-	-	6m²	89m²	7m²	1	3m²
102	1	1	75 m²	25m²	-	-	8m²	108m²	7m²	1	3m²
103	1	1	50 m²	10m²	-	-	5m²	65m²	2m²	1	2.5m²
201	2	2	65m²	18 m²	-	-	6m²	89m²	7m²	1	3m²
202	2	1	75 m²	25m²	-	-	8m²	108m²	7m²	1	3m²
203	2	1	50 m²	10 m²	-	-	5m²	65m²	2m²	1	2.5m²
301	3	2	76 m²	22 m²	-	-	8m²	106 m²	7m²	1	3m²
302	3	2	76 m²	22m²	-	-	8m²	106m²	7m²	1	3m²
401	4	2	76 m²	22 m²	17m²	45m²	8m²	168m²	7m²	1	8m²
402	4	2	76 m²	22 m²	-	60m²	8m²	166m²	7m²	1	8m²

FLOOR PLANS



GROUND FLOOR PLAN

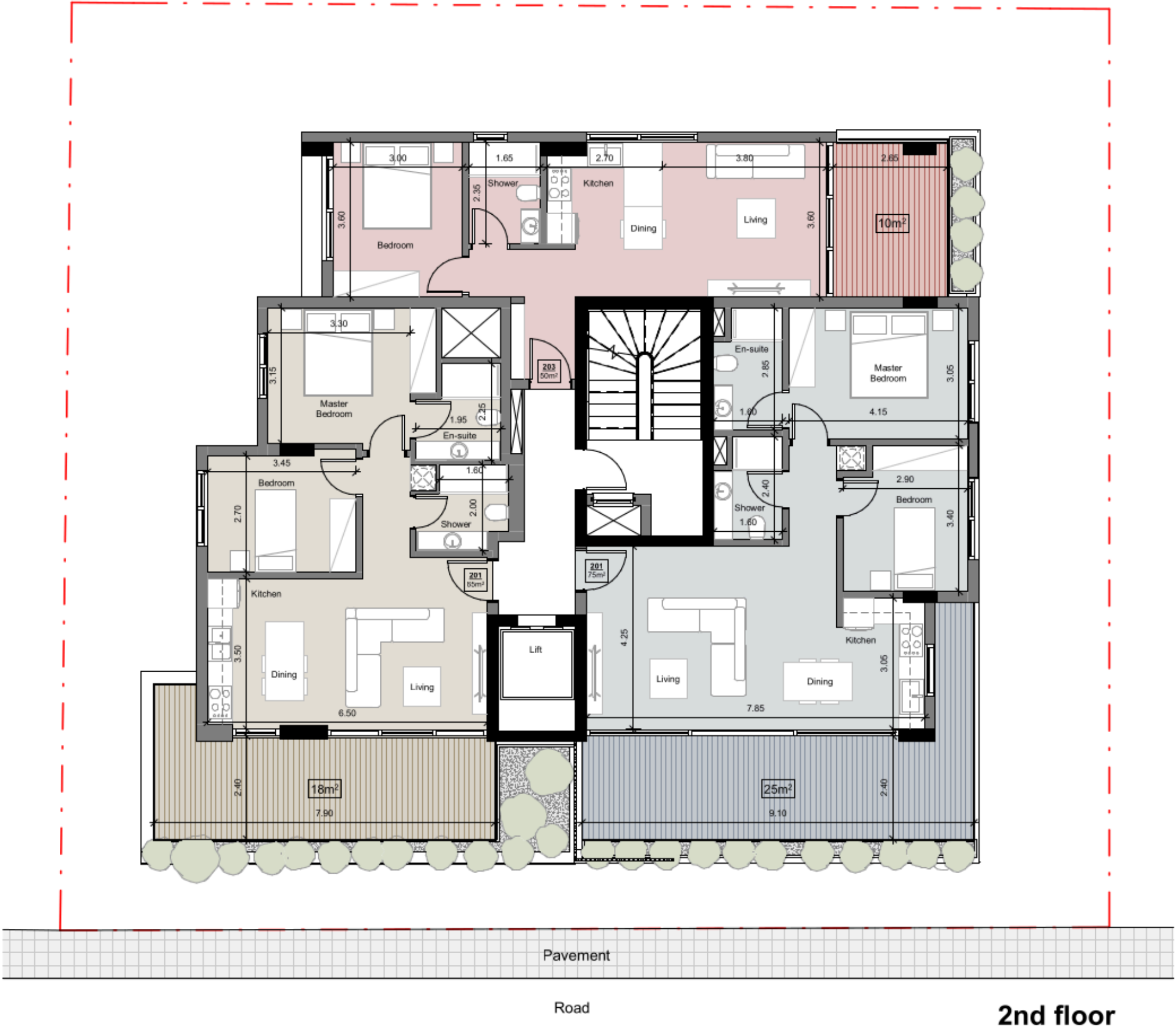


ground floor

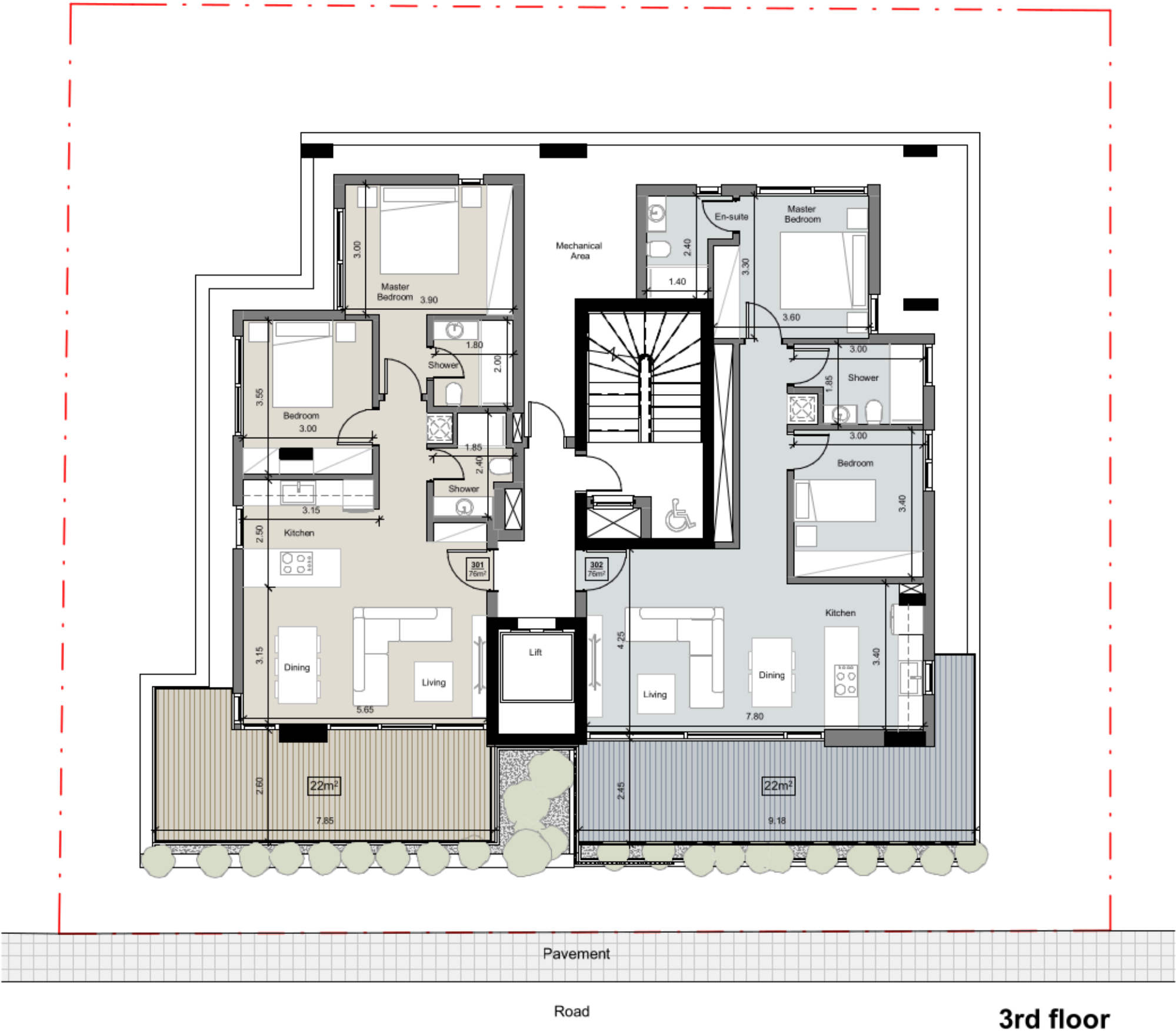
1ST FLOOR PLAN



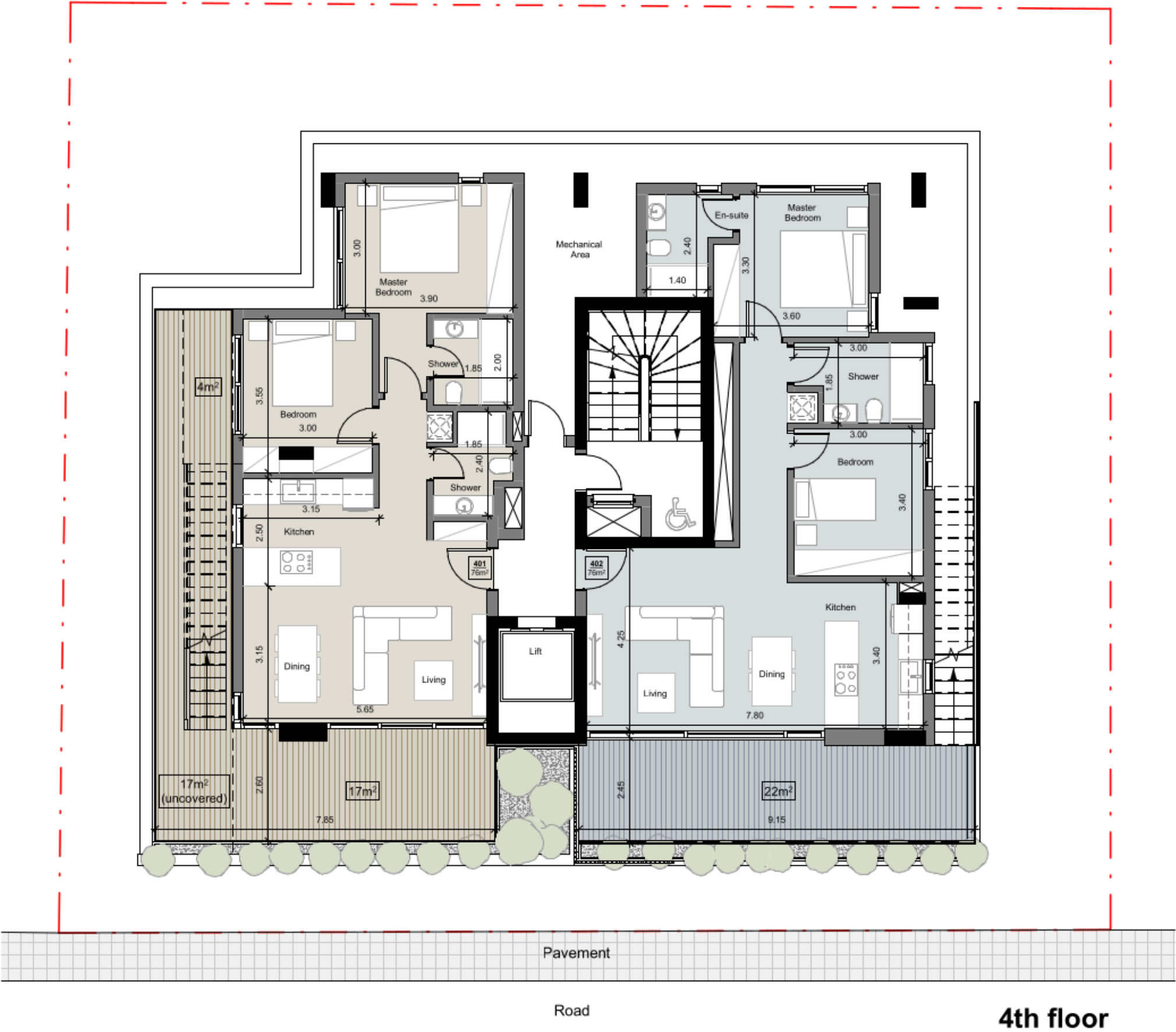
2ND FLOOR PLAN



3RD FLOOR PLAN



4TH FLOOR PLAN



ROOF GARDEN PLAN



DOMO PROPERTIES

Based in Limassol, we take great pride in distinctive projects across the city we love. With a strong focus on functional aesthetics, technology and sustainability we believe we make our customers lives better while protecting this island we call home.

OUR PHILOSOPHY

Spaces and places must have a positive impact on the people who use them and their surroundings. This is why we pursue to develop innovative, elegant and sustainable buildings that celebrate the use of natural light and the latest technologies. We strongly appreciate the importance of social, environmental and economic issues and work hard to address them with a caring approach to the way we design, develop and provision for our developments. The ultimate goal is to deliver life enhancing properties that are beautiful to look at and easy to live with.

For more information please visit us at:
www.domoproperties.com

DOMO
P R O P E R T I E S